



<b>EAN:</b>	4013288173003	<b>Size:</b>	190x100x35 mm
<b>Part number:</b>	05056490001	<b>Weight:</b>	523 g
<b>Article number:</b>	Tool-Check PLUS	<b>Country of origin:</b>	CZ
		<b>Customs tariff number:</b>	82079030

- Convenient direction change thanks to switchover lever
- Fine-pitched ratchet mechanism and small return angle of 6°
- Very robust without any restrictions on torque
- Quick-release chuck with Rapidaptor technology
- With Take it easy tool finder: colour coding by size

Combination tool consisting of a ratchet, bits, sockets and holder in a minimum of space. Ideal as a universal companion for a whole host of screwdriving applications. High quality bit holder with Kraftform Plus handle for pleasant, ergonomic working that prevents blisters and calluses. Hard gripping zones for high working speeds whereas soft zones ensure high torque transfer. Mini ratchet for rapid working when fastening jobs with a power tool or conventional hand tools are not feasible due to insufficient space. Rapid changeover from left to right direction and vice versa by using the switchover lever. Fast work possible by turning the thumbwheel (with the thumb) on the ratchet head. Simplest operation even with just one hand. Ergonomic ratchet head/lever: Kraftform geometry with perfectly shaped contact areas for the fingers. The direct bit take-up in the ratchet head makes for a mini tool design and is ideal for low working heights. The small return angle of 6° allows for precise work. Robust drop-forged, full steel design. Torque of over 65 Nm. The Rapidaptor bit holder with free-turning sleeve: can be used as an extension; for rapid bit change without any special tools - even the very smallest bits with just a single hand. Tough viscous bits for universal use. Sockets for both manual as well as power tool operations for almost all applications. "Take it easy" Tool Finder with colour coding according to size - for simple and rapid accessing of the required tool. Featuring a good grip to allow easy pick-up even with oily hands. Ball stop groove, for hex head bolts and nuts; chrome vanadium steel, matt chrome-plated.

**Web link**

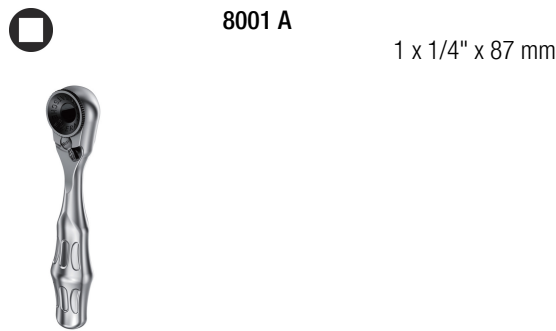
[https://products.wera.de/en/zyklop\\_ratchets\\_and\\_accessories\\_zyklop\\_mini\\_zyklop\\_mini\\_1\\_tool-check\\_plus.html](https://products.wera.de/en/zyklop_ratchets_and_accessories_zyklop_mini_zyklop_mini_1_tool-check_plus.html)

Wera - Tool-Check PLUS  
05056490001 - 4013288173003

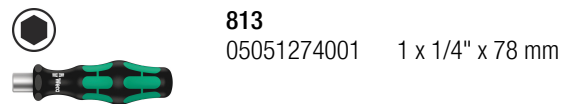
Wera Werkzeuge GmbH  
Korzter Straße 21-25  
D-42349 Wuppertal  
Tel: +49 (0)2 02 / 40 45-0  
E-Mail: info@wera.de

Zyklop Mini 1

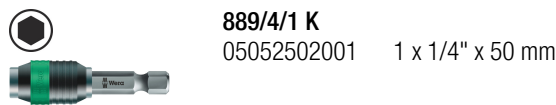
Set contents:



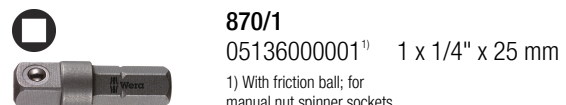
**8001 A**  
1 x 1/4" x 87 mm



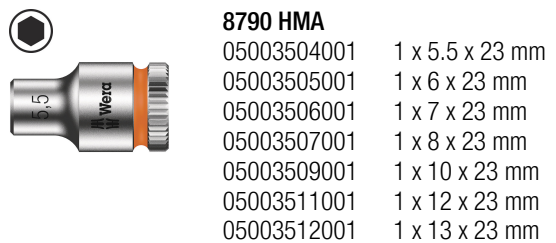
**813**  
05051274001 1 x 1/4" x 78 mm



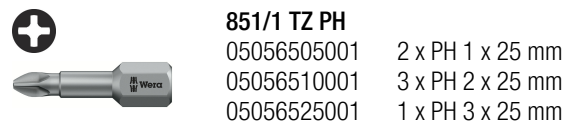
**889/4/1 K**  
05052502001 1 x 1/4" x 50 mm



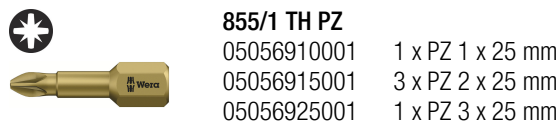
**870/1**  
05136000001<sup>1)</sup> 1 x 1/4" x 25 mm  
1) With friction ball; for manual nut spinner sockets



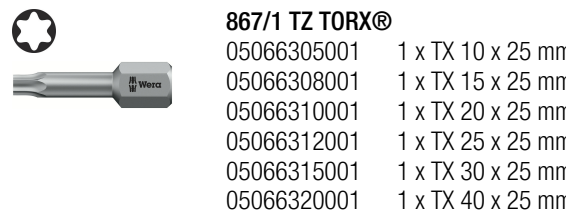
**8790 HMA**  
05003504001 1 x 5.5 x 23 mm  
05003505001 1 x 6 x 23 mm  
05003506001 1 x 7 x 23 mm  
05003507001 1 x 8 x 23 mm  
05003509001 1 x 10 x 23 mm  
05003511001 1 x 12 x 23 mm  
05003512001 1 x 13 x 23 mm



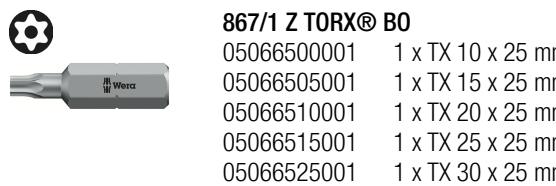
**851/1 TZ PH**  
05056505001 2 x PH 1 x 25 mm  
05056510001 3 x PH 2 x 25 mm  
05056525001 1 x PH 3 x 25 mm



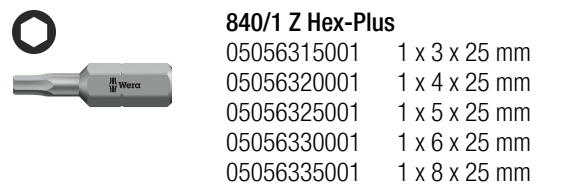
**855/1 TH PZ**  
05056910001 1 x PZ 1 x 25 mm  
05056915001 3 x PZ 2 x 25 mm  
05056925001 1 x PZ 3 x 25 mm



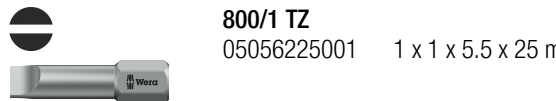
**867/1 TZ TORX®**  
05066305001 1 x TX 10 x 25 mm  
05066308001 1 x TX 15 x 25 mm  
05066310001 1 x TX 20 x 25 mm  
05066312001 1 x TX 25 x 25 mm  
05066315001 1 x TX 30 x 25 mm  
05066320001 1 x TX 40 x 25 mm



**867/1 Z TORX® B0**  
05066500001 1 x TX 10 x 25 mm  
05066505001 1 x TX 15 x 25 mm  
05066510001 1 x TX 20 x 25 mm  
05066515001 1 x TX 25 x 25 mm  
05066525001 1 x TX 30 x 25 mm



**840/1 Z Hex-Plus**  
05056315001 1 x 3 x 25 mm  
05056320001 1 x 4 x 25 mm  
05056325001 1 x 5 x 25 mm  
05056330001 1 x 6 x 25 mm  
05056335001 1 x 8 x 25 mm



**800/1 TZ**  
05056225001 1 x 1 x 5.5 x 25 mm

Web link

[https://products.wera.de/en/zyklop\\_ratchets\\_and\\_accessories\\_zyklop\\_mini\\_zyklop\\_mini\\_1\\_tool-check\\_plus.html](https://products.wera.de/en/zyklop_ratchets_and_accessories_zyklop_mini_zyklop_mini_1_tool-check_plus.html)

Wera - Tool-Check PLUS  
05056490001 - 4013288173003

Wera Werkzeuge GmbH  
Korzter Straße 21-25  
D-42349 Wuppertal  
Tel: +49 (0)2 02 / 40 45-0  
E-Mail: info@wera.de

Zyklop Mini 1

The Zyklop Mini Ratchets

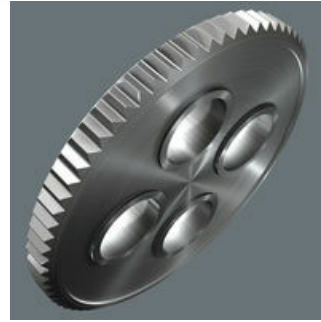


1/4" Mini ratchet, Kraftform holder, tough viscous bits, Rapidaptor holder, adaptor and 1/4" sockets



For all difficult-to-access applications.

Small return angle



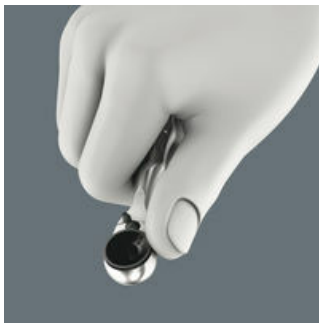
The fine tooth mechanism, with its 60 teeth, allows a small return angle of only 6° - ideal for precision work.

Simple direction change



Simple switching between left/right operations.

Rapid screwdriving



High working speeds can be attained with the Zyklop Mini 1. The thumb wheel is important, enabling more rapid screwdriving, and the Zyklop Mini handle only needs to be used for the final tightening of the screw.

Zyklop Mini tool sets



Available in a set with the dependable Wera Bit-Check with socket adaptor and belt clip. Simple fitting and removal of tools. Very robust and a long service life.

Slim design



Its slim design makes it ideal for all particularly confined working situations.

Take it easy tool finder system



Take it easy tool finder system - with profile and size colour-coding for quick and easy tool selection. Colour-coded system for hexagon drive screws (L-Keys, Zyklop bit sockets), external hex drive screws and nuts (Joker wrenches, Zyklop sockets and Zyklop bit sockets with holding function), and TORX® drive screws (L-Keys, Zyklop bit sockets).

Web link

[https://products.wera.de/en/zyklop\\_ratchets\\_and\\_accessories\\_zyklop\\_mini\\_zyklop\\_mini\\_1\\_tool-check\\_plus.html](https://products.wera.de/en/zyklop_ratchets_and_accessories_zyklop_mini_zyklop_mini_1_tool-check_plus.html)

Wera - Tool-Check PLUS  
05056490001 - 4013288173003

Wera Werkzeuge GmbH  
Korzter Straße 21-25  
D-42349 Wuppertal  
Tel: +49 (0)2 02 / 40 45-0  
E-Mail: info@wera.de