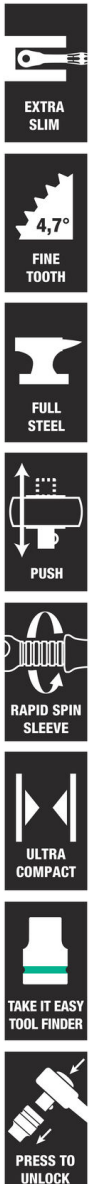


8100 SB 7 Zyklop Metal Ratchet Set with push-through square, 3/8" drive, metric ,  
29 pieces  
The Zyklop Ratchets, 3/8"



**EAN:** 4013288173867  
**Part number:** 05004047001  
**Article number:** 8100 SB 7

**Size:** 265x120x55 mm  
**Weight:** 1536 g  
**Country of origin:** CZ  
**Customs tariff number:** 82041100



- Extremely slim ratchet with long lever
- Return angle of only 4.7°
- Very robust without any restrictions on torque
- Absolutely smooth switchover of the non-detachable push-through square
- Take it easy tool finder with colour coding according to sizes

Incredibly compact set arrangement with many tools in a minimum of space. A completely new ratchet set feeling thanks to the unique textile boxes that are very robust and durable. They can be positioned upright for tidy storage on the workshop shelf. Additional surface protection due to textile outer material. Low weight and volume for simpler mobility. "Take it easy" Tool Finder with colour coding according to sizes.

**Web link**

[http://products.wera.de/en/tools\\_for\\_the\\_aerospace\\_segment\\_ratchets\\_the\\_zyklop\\_ratchets\\_3\\_8\\_8100\\_sb\\_7.html](http://products.wera.de/en/tools_for_the_aerospace_segment_ratchets_the_zyklop_ratchets_3_8_8100_sb_7.html)


Wera - 8100 SB 7  
05004047001 - 4013288173867

Wera Werkzeuge GmbH  
Korzter Straße 21-25  
D-42349 Wuppertal  
Tel: +49 (0)2 02 / 40 45-0  
E-Mail: [info@wera.de](mailto:info@wera.de)


**8100 SB 7 Zyklop Metal Ratchet Set with push-through square, 3/8" drive, metric ,  
29 pieces  
The Zyklop Ratchets, 3/8"**




**Set contents:**

 **8003 B**  
05004033001 1 x 3/8"x222.0




 **8790 HMB**  
05003553001 1 x 8.0x29.0  
05003555001 1 x 10.0x29.0  
05003557001 1 x 12.0x29.0  
05003558001 1 x 13.0x29.0  
05003560001 1 x 15.0x29.0  
05003561001 1 x 16.0x30.0  
05003562001 1 x 17.0x30.0  
05003563001 1 x 18.0x30.0  
05003564001 1 x 19.0x30.0




 **8794 LB**  
05003583001 1 x 3/8"x200.0




 **8794 B**  
05003584001 1 x 3/8"x76.0




 **8784 B1**  
05003590001 1 x 1/4"x3/8"x44.0




 **851/1 Z PH**  
05072070001 1 x PH 1x25  
05072072001 1 x PH 2x25  
05072074001 1 x PH 3x25




 **855/1 Z PZ**  
05072080001 1 x PZ 1x25  
05072082001 1 x PZ 2x25



 **867/1 TORX®**  
05066486001 1 x TX 15x25  
05066487001 1 x TX 20x25  
05066488001 1 x TX 25x25  
05066489001 1 x TX 27x25  
05066490001 1 x TX 30x25  
05066491001 1 x TX 40x25



 **840/1 Z Hex-Plus**  
05056315001 1 x 3.0x25  
05056320001 1 x 4.0x25  
05056325001 1 x 5.0x25  
05056330001 1 x 6.0x25  
05056335001 1 x 8.0x25



**Web link**

[http://products.wera.de/en/tools\\_for\\_the\\_aerospace\\_segment\\_ratchets\\_the\\_zyklop\\_ratchets\\_3\\_8\\_8100\\_sb\\_7.html](http://products.wera.de/en/tools_for_the_aerospace_segment_ratchets_the_zyklop_ratchets_3_8_8100_sb_7.html)

Wera - 8100 SB 7  
05004047001 - 4013288173867

Wera Werkzeuge GmbH  
Korzter Straße 21-25  
D-42349 Wuppertal  
Tel: +49 (0)2 02 / 40 45-0  
E-Mail: info@wera.de

**8100 SB 7 Zyklus Metal Ratchet Set with push-through square, 3/8" drive, metric ,  
29 pieces  
The Zyklus Ratchets, 3/8"**



**Zyklus Metal Push**



Due to the ever-more confined working environment, space is becoming more and more an issue for the application of ratchets. Our product developers therefore intensively occupied themselves with the issue of confined working spaces, and Wera has now solved this problem. The extremely slim and robust Zyklus Metal ratchet with a long lever was what emerged. When the socket must not get lost and a coincidental change of direction has to be avoided at all cost, the Zyklus Metal Push is the correct choice.

**The Zyklus Ratchet Metal Push**



Extremely slim. Long leverage. With push-through square.

**Slim design**



Forged, full metal ratchet (chrome-molybdenum) that is extremely robust with a long service life; slim design to enable work in very confined spaces.

**Web link**

[http://products.wera.de/en/tools\\_for\\_the\\_aerospace\\_segment\\_ratchets\\_the\\_zyklus\\_ratchets\\_3\\_8\\_8100\\_sb\\_7.html](http://products.wera.de/en/tools_for_the_aerospace_segment_ratchets_the_zyklus_ratchets_3_8_8100_sb_7.html)

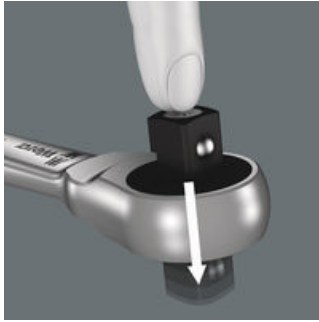
Wera - 8100 SB 7  
05004047001 - 4013288173867

Wera Werkzeuge GmbH  
Korzter Straße 21-25  
D-42349 Wuppertal  
Tel: +49 (0)2 02 / 40 45-0  
E-Mail: [info@wera.de](mailto:info@wera.de)

8100 SB 7 Zyklop Metal Ratchet Set with push-through square, 3/8" drive, metric ,  
29 pieces  
The Zyklop Ratchets, 3/8"

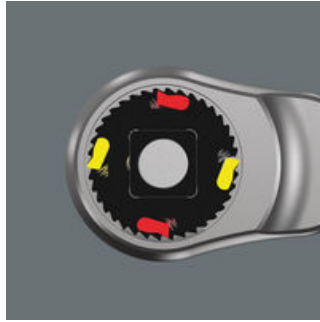


Square drive



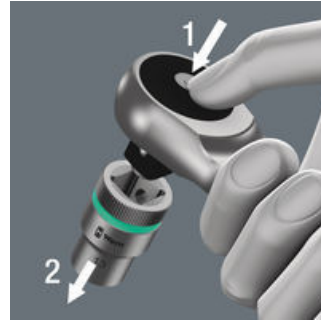
Smooth push-through mechanism, that cannot get lost.

Dual ratchet teeth



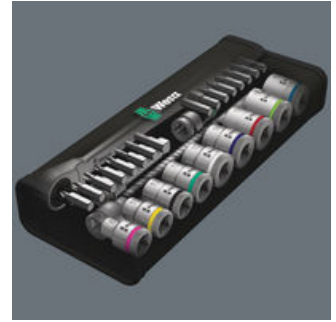
The dual-ratchet-teeth design means that a 76 fine-toothing division can be achieved from the 38 robust teeth with a return angle of only 4.7°.

Ball lock



The ball lock holds the sockets and attachments securely, ensuring safe working. A changeover into any predefined position is completed by simply pressing the release button – this is even the case in the 90° position.

Textile boxes



The textile boxes offer dramatically improved portability, and are space-saving to boot! This means you can now carry the same collection of tools, in a much more compact and comfortable package. The hassle of running back and forth for the right tools has now become a thing of the past. And the much lower weight of a set makes carrying more convenient than ever before. The textile box including the tool will even survive a fall undamaged.

Web link

[http://products.wera.de/en/tools\\_for\\_the\\_aerospace\\_segment\\_ratchets\\_the\\_zyklop\\_ratchets\\_3\\_8\\_8100\\_sb\\_7.html](http://products.wera.de/en/tools_for_the_aerospace_segment_ratchets_the_zyklop_ratchets_3_8_8100_sb_7.html)

Wera - 8100 SB 7  
05004047001 - 4013288173867

Wera Werkzeuge GmbH  
Korzter Straße 21-25  
D-42349 Wuppertal  
Tel: +49 (0)2 02 / 40 45-0  
E-Mail: [info@wera.de](mailto:info@wera.de)