

# Click-Torque X 1 torque wrench for insert tools, 9 x 12 mm, 2.55 - 25 Nm

## Series Click-Torque Wrenches



<b>EAN:</b>	4013288193773	<b>Size:</b>	320x50x50 mm
<b>Part number:</b>	05075651001	<b>Weight:</b>	515 g
<b>Article number:</b>	Click-Torque X 1	<b>Country of origin:</b>	TW
		<b>Customs tariff number:</b>	82041100

- For 9x12 mm interchangeable insert tools
- Easy setting and saving of the desired torque value with audible and tactile clicks when reaching the scale values
- Audible and tactile release mechanism when the set torque value is reached
- Measuring range: 2.5-25 Nm; Precise to +/- 4% as per DIN EN ISO 6789-1:2017-07
- Very robust design with ergonomic 2-component handle suitable for right-hand use

Click-Torque wrench in the unmistakable, robust Wera design with high accuracy as per DIN EN ISO 6789-1: 2017-07. Easy setting and saving of the default value. The audible and tactile clicks on reaching the scale values also facilitate the safe setting of the desired torque value. The robust release mechanism guarantees a clearly audible and tactile release signal when the set torque is reached. For right-hand and left-hand use and with 9x12mm insert square for the insertion of insert tools.

### Web link

[http://products.wera.de/en/torque\\_tools\\_series\\_click-torque\\_wrenches\\_adjustable\\_torque\\_wrenches\\_click-torque\\_x\\_1.html](http://products.wera.de/en/torque_tools_series_click-torque_wrenches_adjustable_torque_wrenches_click-torque_x_1.html)

Wera - Click-Torque X 1  
05075651001 - 4013288193773

Wera Werkzeuge GmbH  
Korzter Straße 21-25  
D-42349 Wuppertal  
Tel: +49 (0)2 02 / 40 45-0  
E-Mail: [info@wera.de](mailto:info@wera.de)

# Click-Torque X 1 torque wrench for insert tools, 9 x 12 mm, 2.55 - 25 Nm



## Series Click-Torque Wrenches

### Click-Torque Wrench series

### Drive 9x12 mm

### Exact

### Simple and safe



We wanted working with torque wrenches to be simple and accurate which is why we developed the Click-Torque wrenches. With the ability to set and save the default values and with the unmistakable, robust Wera design, these torque wrenches are the ideal tools for all bolting applications that require torque-controlled tightening (clockwise torque wrenches) and tightening and loosening (torque wrenches for insert tools).

For 9x12 mm interchangeable insert tools

Precise to ± 4% as per DIN EN ISO 6789-1:2017-07.

Easy setting and saving of the desired torque value; readable on the main and fine scales.

### Simple setting

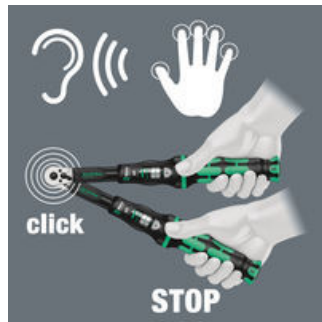
### Release mechanism

### For right and left direction

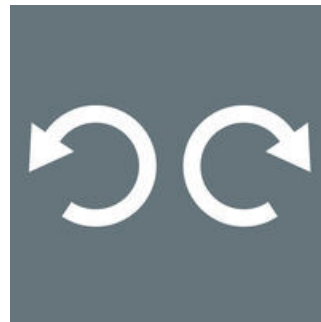
### Robust models



With audible and tactile clicks when adjusting the scale values.



When the set torque value is reached, an audible and tactile mechanism triggers.

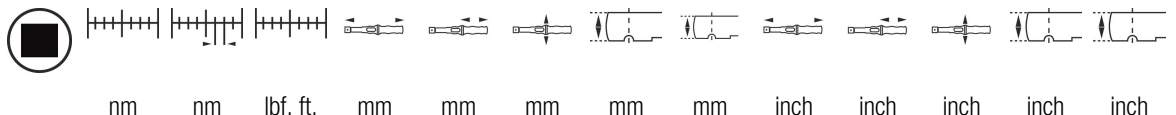


The Click-Torque wrenches for insert tools are suitable for right-hand and left-hand uses.



Very robust design with ergonomic 2-component handle.

### Further versions in this product family:



		nm	nm	lbf. ft.	mm	mm	mm	mm	mm	inch	inch	inch	inch	inch
05075651001	9x12	2.5-25	0.10	1-18	283	121	42	24	20	11 9/64"	4 49/64"	1 21/32"	15/16"	25/32"

### Web link

[http://products.wera.de/en/torque\\_tools\\_series\\_click-torque\\_wrenches\\_adjustable\\_torque\\_wrenches\\_click-torque\\_x\\_1.html](http://products.wera.de/en/torque_tools_series_click-torque_wrenches_adjustable_torque_wrenches_click-torque_x_1.html)

Wera - Click-Torque X 1  
05075651001 - 4013288193773

Wera Werkzeuge GmbH  
Korzter Straße 21-25  
D-42349 Wuppertal  
Tel: +49 (0)2 02 / 40 45-0  
E-Mail: info@wera.de

Click-Torque X 1 torque wrench for insert tools, 9 x 12 mm, 2.55 - 25 Nm

Series Click-Torque Wrenches



**Web link**

[http://products.wera.de/en/torque\\_tools\\_series\\_click-torque\\_wrenches\\_adjustable\\_torque\\_wrenches\\_click-torque\\_x\\_1.html](http://products.wera.de/en/torque_tools_series_click-torque_wrenches_adjustable_torque_wrenches_click-torque_x_1.html)

Wera - Click-Torque X 1  
05075651001 - 4013288193773

Wera Werkzeuge GmbH  
Korzter Straße 21-25  
D-42349 Wuppertal  
Tel: +49 (0)2 02 / 40 45-0  
E-Mail: [info@wera.de](mailto:info@wera.de)