

Click-Torque X 2 torque wrench for insert tools, 9 x 12 mm, 10 - 50 Nm

Series Click-Torque Wrenches



EAN:	4013288193797	Size:	405x60x60 mm
Part number:	05075652001	Weight:	960 g
Article number:	Click-Torque X 2	Country of origin:	TW
		Customs tariff number:	82041100

- For 9x12 mm interchangeable insert tools
- Easy setting and saving of the desired torque value with audible and tactile clicks when reaching the scale values
- Audible and tactile release mechanism when the set torque value is reached
- Measuring range: 10-50 Nm; Precise to +/- 3% as per DIN EN ISO 6789-1:2017-07
- Very robust design with ergonomic 2-component handle suitable for right-hand use

Click-Torque wrench in the unmistakable, robust Wera design with high accuracy as per DIN EN ISO 6789-1: 2017-07. Easy setting and saving of the default value. The audible and tactile clicks on reaching the scale values also facilitate the safe setting of the desired torque value. The robust release mechanism guarantees a clearly audible and tactile release signal when the set torque is reached. For right-hand and left-hand use and with 9x12mm insert square for the insertion of insert tools.

Web link

http://products.wera.de/en/torque_tools_series_click-torque_wrenches_adjustable_torque_wrenches_click-torque_x_2.html

Wera - Click-Torque X 2
05075652001 - 4013288193797

Wera Werkzeuge GmbH
Korzter Straße 21-25
D-42349 Wuppertal
Tel: +49 (0)2 02 / 40 45-0
E-Mail: info@wera.de

Click-Torque X 2 torque wrench for insert tools, 9 x 12 mm, 10 - 50 Nm



Series Click-Torque Wrenches

Click-Torque Wrench series



We wanted working with torque wrenches to be simple and accurate which is why we developed the Click-Torque wrenches. With the ability to set and save the default values and with the unmistakable, robust Wera design, these torque wrenches are the ideal tools for all bolting applications that require torque-controlled tightening (clockwise torque wrenches) and tightening and loosening (torque wrenches for insert tools).

Drive 9x12 mm



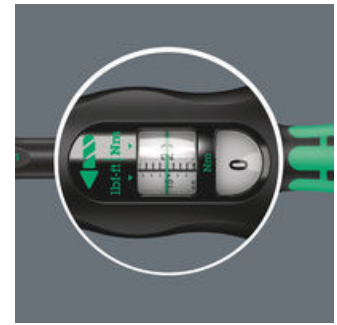
For 9x12 mm interchangeable insert tools

Exact



Precise to ± 3% as per DIN EN ISO 6789-1:2017-07.

Simple and safe



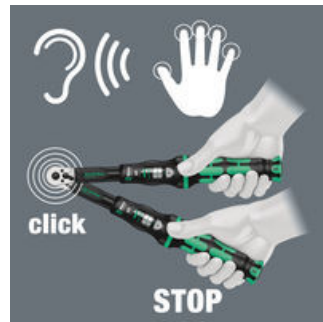
Easy setting and saving of the desired torque value; readable on the main and fine scales.

Simple setting



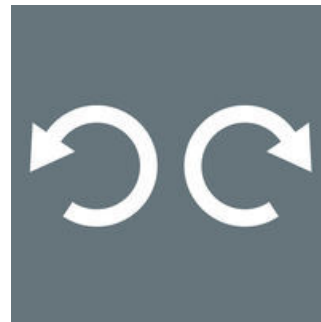
With audible and tactile clicks when adjusting the scale values.

Release mechanism



When the set torque value is reached, an audible and tactile mechanism triggers.

For right and left direction



The Click-Torque wrenches for insert tools are suitable for right-hand and left-hand uses.

Robust models



Very robust design with ergonomic 2-component handle.

Further versions in this product family:

		nm	nm	lbf. ft.	mm	mm	mm	mm	mm	inch	inch	inch	inch	inch
05075652001	9x12	10-50	0.25	8-36	338	140	47	29	20	13 5/16"	5 33/64"	1 27/32"	1 9/64"	25/32"

Web link

http://products.wera.de/en/torque_tools_series_click-torque_wrenches_adjustable_torque_wrenches_click-torque_x_2.html

Wera - Click-Torque X 2
05075652001 - 4013288193797

Wera Werkzeuge GmbH
Korzter Straße 21-25
D-42349 Wuppertal
Tel: +49 (0)2 02 / 40 45-0
E-Mail: info@wera.de

Click-Torque X 2 torque wrench for insert tools, 9 x 12 mm, 10 - 50 Nm

Series Click-Torque Wrenches



Web link

http://products.wera.de/en/torque_tools_series_click-torque_wrenches_adjustable_torque_wrenches_click-torque_x_2.html

Wera - Click-Torque X 2
05075652001 - 4013288193797

Wera Werkzeuge GmbH
Korzter Straße 21-25
D-42349 Wuppertal
Tel: +49 (0)2 02 / 40 45-0
E-Mail: info@wera.de