

Click-Torque A 6 Set 1, 19 pieces

Innovations and Autumn/Winter Campaign 2018/2019



EAN:	4013288205643	Size:	335x110x60 mm
Part number:	05130110001	Weight:	1115 g
Article number:	Click-Torque A 6 Set 1	Country of origin:	CZ
		Customs tariff number:	82041200

- Easy setting and saving of the desired torque value with audible and tactile click when the scale value is reached (click 1)
- Safely quantified force: when the set value is reached, the torque wrench triggers audibly and noticeably (click 2)
- Measuring range: 2.5-25 Nm; Precise to +/- 4% as per DIN EN ISO 6789-1:2017-07
- Set including socket adapter and extension
- Robust surface-protecting, compact, textile box

Click torque wrench in the unmistakable Wera design. Very robust design with high accuracy as per DIN EN ISO 6789-1: 2017-07. Easy setting and saving of the default value. The audible and tactile clicks on reaching the scale values facilitate the safe setting of the desired torque value. The robust release mechanism guarantees a clearly audible and tactile release signal when the set torque is reached. Provides clockwise torque-control and 45-tooth ratchet mechanism. The Wera click torque wrench is accompanied with various accessories in a compact set arrangement. Included are: Click-Torque A 6 1/4 „ from 2.5 to 25 Nm, 6 sockets with 1/4“ drive, 11 Hex-Plus hexagon bits, Phillips head bits and TORX® bits, plus an extension and socket adaptor.

Web link

http://products.wera.de/en/innovations_and_autumn_winter_campaign_2018_2019_click-torque_a_6_set_1.html

Wera - Click-Torque A 6 Set 1
05130110001 - 4013288205643

Wera Werkzeuge GmbH
Korzter Straße 21-25
D-42349 Wuppertal
Tel: +49 (0)2 02 / 40 45-0
E-Mail: info@wera.de

Click-Torque Wrench series



Click Torque wrench set 1/4" with double click.



We wanted working with torque wrenches to be simple and accurate which is why we developed the Click-Torque wrenches. With the ability to set and save the default values and with the unmistakable, robust Wera design, these torque wrenches are the ideal tools for all bolting applications that require torque-controlled tightening (clockwise torque wrenches) and tightening and loosening (torque wrenches for insert tools).

Click-Torque A 6



With 1/4" hex drive.

Exact



Precise to ± 4% as per DIN EN ISO 6789-1:2017-07.

Simple and safe



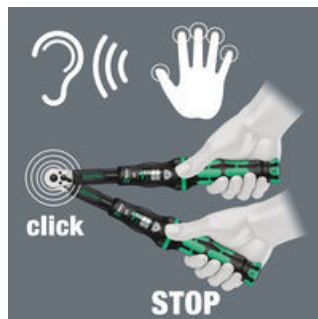
Easy setting and saving of the desired torque value; readable on the main and fine scales.

Simple setting



With audible and tactile clicks when adjusting the scale values.

Release mechanism



When the set torque value is reached, an audible and tactile mechanism triggers.

Manual and machine sockets



The manual and machine sockets can be used both for hand and power tools use (non-impact). Users need just one socket set for all applications.

Web link

http://products.wera.de/en/innovations_and_autumn_winter_campaign_2018_2019_click-torque_a_6_set_1.html

Wera - Click-Torque A 6 Set 1
05130110001 - 4013288205643

Wera Werkzeuge GmbH
Korzter Straße 21-25
D-42349 Wuppertal
Tel: +49 (0)2 02 / 40 45-0
E-Mail: info@wera.de