



|                        |                  |                               |              |
|------------------------|------------------|-------------------------------|--------------|
| <b>EAN:</b>            | 4013288207616    | <b>Size:</b>                  | 225x95x46 mm |
| <b>Part number:</b>    | 05134275001      | <b>Weight:</b>                | 433 g        |
| <b>Article number:</b> | 395 H0/3 Sanitär | <b>Country of origin:</b>     | CZ           |
|                        |                  | <b>Customs tariff number:</b> | 82054000     |

- Nutsetter for hexagon head screws, chrome-plated
- With hollow shaft for protruding threaded rods, particularly suitable for installing/removing mixer taps on washbasins
- Multi-component Kraftform handle for fast and ergonomic screwdriving
- Handle markings simplify finding and sorting of tools
- Hexagonal anti-roll feature against rolling away

Socket wrench screwdriver with hollow shaft from Wera. Hollow shaft for screwdriving with threaded rods, as the hollow shaft takes the threaded rod through the socket bolt. Set equipment particularly suitable for installing and removing mixer taps on washbasins. Multi-component Kraftform handle for high working speeds and particularly ergonomic screwdriving. Kraftform Plus: Hard grip zones for high working speeds, while soft grip zones guarantee high torque transmission. Hexagonal rolling protection prevents it rolling away. With handle markings for easier tool identification. For external hex screws.

**Web link**

[https://products.wera.de/en/screwdrivers\\_kraftform\\_plus\\_series\\_300\\_395\\_ho\\_3\\_sanitaer.html](https://products.wera.de/en/screwdrivers_kraftform_plus_series_300_395_ho_3_sanitaer.html)

Wera - 395 H0/3 Sanitär  
05134275001 - 4013288207616

Wera Werkzeuge GmbH  
Korzter Straße 21-25  
D-42349 Wuppertal  
Tel: +49 (0)2 02 / 40 45-0  
E-Mail: info@wera.de

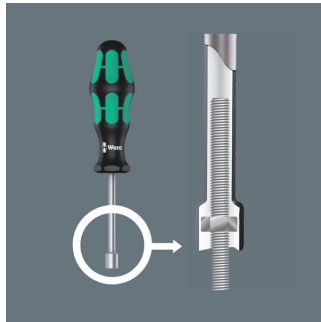
Set contents:



**395 H0**

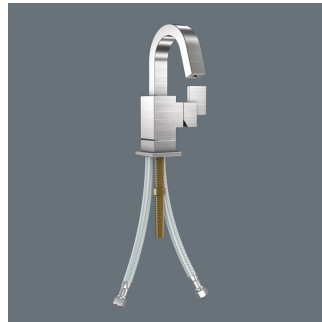
|             |                   |
|-------------|-------------------|
| 05029465001 | 1 x 10 x 90 mm    |
| 05029466001 | 1 x 13 x 90 mm    |
| 05029506001 | 1 x 7/16" x 90 mm |

**Hollow shaft nutsetter**



A screwdriver with a hollow shaft is needed whenever there are screwdriving jobs involving threaded rods i.e. the threaded rod through the nut can slip into the hollow shaft of the screwdriver.

**With hollow shaft**



The 395 H0 screwdrivers have a hollow shaft that can accommodate protruding threaded rods. This is particularly useful when installing/removing mixer taps on washbasins.

**Kraftform**



The basic idea for the prototype of the Kraftform handle – that the hand should dictate the design – has, right through to today, proved to be correct. In cooperation with the internationally recognised Fraunhofer IAO Institute, Wera developed a screwdriver handle designed to match the shape of the human hand as long ago as the 1960s. After a long development phase, the Wera Kraftform handle was launched to the market in 1968. It has been optimised through the years with new technologies, but has kept its proven shape. After all, the human hand has not changed either.

**Prevents hand injuries**



The outstanding design of the Kraftform handle that fits perfectly into the hand prevents hand injuries such as blisters and calluses.

**Web link**

[https://products.wera.de/en/screwdrivers\\_kraftform\\_plus\\_series\\_300\\_395\\_ho\\_3\\_sanitaer.html](https://products.wera.de/en/screwdrivers_kraftform_plus_series_300_395_ho_3_sanitaer.html)

Wera - 395 H0/3 Sanitär  
05134275001 - 4013288207616

Wera Werkzeuge GmbH  
Korzter Straße 21-25  
D-42349 Wuppertal  
Tel: +49 (0)2 02 / 40 45-0  
E-Mail: info@wera.de

**Rapid hand repositioning**



The hard materials used for the handle ensure rapid hand repositioning without any danger of the skin “sticking” to the handle. The surrounding hard zones with large diameters glide like wheels across the hand.

**Large contact area**



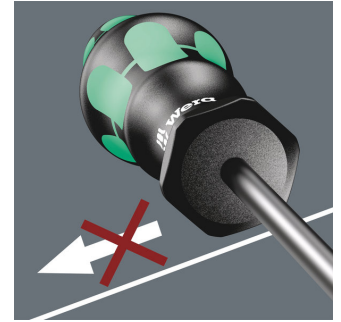
The large contact area – with particularly high friction to the soft zones – results in high torque transfer without any bruising from the edges.

**Identification marking**



The screw symbol and tip size identification markings on the handle make it easier to find the right screwdriver in the tool case, or at the workplace.

**Non-roll feature**



The hexagonal non-roll feature prevents any rolling away at the workplace.

**Web link**

[https://products.wera.de/en/screwdrivers\\_kraftform\\_plus\\_series\\_300\\_395\\_ho\\_3\\_sanitaer.html](https://products.wera.de/en/screwdrivers_kraftform_plus_series_300_395_ho_3_sanitaer.html)

Wera - 395 H0/3 Sanitär  
05134275001 - 4013288207616

Wera Werkzeuge GmbH  
Korzter Straße 21-25  
D-42349 Wuppertal  
Tel: +49 (0)2 02 / 40 45-0  
E-Mail: [info@wera.de](mailto:info@wera.de)