

## 8790 HMA Deep 1/4" socket, 5 x 50 mm

Zyklop Accessories, 1/4"



|                        |               |                               |              |
|------------------------|---------------|-------------------------------|--------------|
| <b>EAN:</b>            | 4013288210128 | <b>Size:</b>                  | 117x45x20 mm |
| <b>Part number:</b>    | 05004501001   | <b>Weight:</b>                | 33 g         |
| <b>Article number:</b> | 8790 HMA Deep | <b>Country of origin:</b>     | TW           |
|                        |               | <b>Customs tariff number:</b> | 82042000     |

- Long sockets for low-lying screwdriving, often even with protruding threaded rods in small spaces
- Hexagonal profile enables precise bolting with high power transmission and preserves the profile
- With Take it easy tool finder: colour coding by size
- Knurling on lower end for more grip when used manually.
- For manual and machine operation (non-impact), ball intercept ring
- Made of matt chromed chrome-vanadium

Long 1/4" hand and machine socket (ISO 2725 part 3) with ball intercept ring; for external hexagonal bolts and sockets. For use in manual and machine operation (non-impact), even with low-lying screwdriving and protruding threaded rods. With Take it easy tool finder with colour coding by size - for easy and fast location of the required tool. Easy to grasp even with oily hands. The hexagon profile allows the transmission of high forces and puts less strain on the edges of bolts or screw heads than a double hexagon profile. Fine-toothed ratchets also make the use of a double hexagon profile superfluous, even in confined spaces, thanks to their small back-pivoting angle.

### Web link

[https://products.wera.de/en/ratchets\\_and\\_accessories\\_the\\_zyklop\\_ratchets\\_the\\_zyklop\\_ratchets\\_1\\_4\\_zyklop\\_accessories\\_1\\_4\\_8790\\_hma\\_deep.html](https://products.wera.de/en/ratchets_and_accessories_the_zyklop_ratchets_the_zyklop_ratchets_1_4_zyklop_accessories_1_4_8790_hma_deep.html)

Wera - 8790 HMA Deep  
05004501001 - 4013288210128

Wera Werkzeuge GmbH  
Korzter Straße 21-25  
D-42349 Wuppertal  
Tel: +49 (0)2 02 / 40 45-0  
E-Mail: [info@wera.de](mailto:info@wera.de)

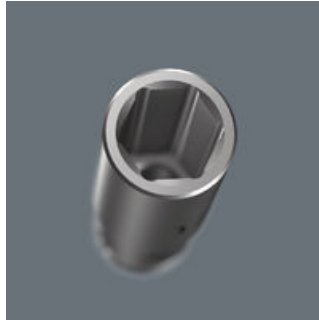
Zyklop Accessories, 1/4"

Long design



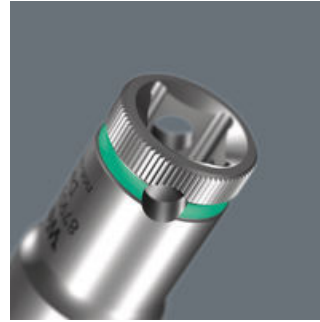
Due to the long design of the socket, screwdriving can also be achieved in small spaces. Fittings with protruding threaded rods are often also possible.

Profile-friendly power transmission



The hexagon profile allows the transmission of high forces and puts less strain on the edges of bolts or screw heads than a double hexagon profile. Fine-toothed ratchets also make the use of a double hexagon profile superfluous, even in confined spaces, thanks to their small return angle.

Knurling



Knurling on lower end for more grip when used manually.

Chrome vanadium steel



The chrome-vanadium steel version makes the plug-in tools suitable for heavy loads.

Take it easy tool finder system



Take it easy tool finder system - with profile and size colour-coding for quick and easy tool selection. Colour-coded system for hexagon drive screws (L-Keys, Zyklop bit sockets), external hex drive screws and nuts (Joker wrenches, Zyklop sockets and Zyklop bit sockets with holding function), and TORX® drive screws (L-Keys, Zyklop bit sockets).





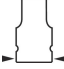
Web link

[https://products.wera.de/en/ratchets\\_and\\_accessories\\_the\\_zyklop\\_ratchets\\_the\\_zyklop\\_ratchets\\_1\\_4\\_zyklop\\_accessories\\_1\\_4\\_8790\\_hma\\_deep.html](https://products.wera.de/en/ratchets_and_accessories_the_zyklop_ratchets_the_zyklop_ratchets_1_4_zyklop_accessories_1_4_8790_hma_deep.html)

Wera - 8790 HMA Deep  
05004501001 - 4013288210128

Wera Werkzeuge GmbH  
Korzter Straße 21-25  
D-42349 Wuppertal  
Tel: +49 (0)2 02 / 40 45-0  
E-Mail: info@wera.de

Further versions in this product family:

|                    |                         |  |  |  |  |  |
|--------------------|-------------------------|---|---|--|---|---|
|                    |                         | mm  | inch  | mm   | mm  | mm  |
| 05004500001        | violett_2735C           | 4.0   | -   | 50.0   | 6.7   | 11.8  |
| <b>05004501001</b> | <b>leuchtgruen_375C</b> | <b>5.0</b>  | -   | <b>50.0</b>  | <b>8.0</b>  | <b>11.8</b>   |
| 05004502001        | leuchtorange_152C       | 5.5   | -   | 50.0   | 8.6   | 11.8  |
| 05004503001        | blau_307C               | 6.0   | -   | 50.0   | 9.2   | 11.8  |
| 05004504001        | gelb_123C               | 7.0   | -   | 50.0   | 10.8  | 11.8  |
| 05004505001        | luminous pink           | 8.0   | -   | 50.0   | 11.8  | 11  |
| 05004506001        | gruen_363C              | 9.0   | -   | 50.0   | 12.8  | 12  |
| 05004507001        | leuchtgelb_yellowC      | 10.0  | -   | 50.0   | 14.7  | 12.8  |
| 05004508001        | cyan_2985C              | 11.0  | -   | 50.0   | 15.8  | 14.0  |
| 05004509001        | schwarz_blackC          | 12.0  | -   | 50.0   | 16.8  | 15.0  |
| 05004510001        | tuerkis_339C            | 13.0  | -   | 50.0   | 17.8  | 16.0  |
| 05004511001        | pink_241C               | 14.0  | -   | 50.0   | 19.8  | 17.0  |
| 05004512001        | weiss                   | 15.0  | -   | 50.0   | 20.8  | 18.0  |

## Web link

[https://products.wera.de/en/ratchets\\_and\\_accessories\\_the\\_zyklop\\_ratchets\\_the\\_zyklop\\_ratchets\\_1\\_4\\_zyklop\\_accessories\\_1\\_4\\_8790\\_hma\\_deep.html](https://products.wera.de/en/ratchets_and_accessories_the_zyklop_ratchets_the_zyklop_ratchets_1_4_zyklop_accessories_1_4_8790_hma_deep.html)

Wera - 8790 HMA Deep  
05004501001 - 4013288210128

Wera Werkzeuge GmbH  
Korzter Straße 21-25  
D-42349 Wuppertal  
Tel: +49 (0)2 02 / 40 45-0  
E-Mail: info@wera.de