

8790 HMB Deep 3/8" socket, 9 x 64 mm

Zyklop Accessories, 3/8"



| | | | |
|------------------------|---------------|-------------------------------|--------------|
| EAN: | 4013288210395 | Size: | 131x45x20 mm |
| Part number: | 05004531001 | Weight: | 62 g |
| Article number: | 8790 HMB Deep | Country of origin: | TW |
| | | Customs tariff number: | 82042000 |

- Long sockets for low-lying screwdriving, often even with protruding threaded rods in small spaces
- Hexagonal profile enables precise bolting with high power transmission and preserves the profile
- With Take it easy tool finder: colour coding by size
- Knurling at lower end to enable easy gripping when used in manual applications
- For manual and machine operation (non-impact), ball intercept ring
- Made of matt chromed chrome-vanadium

The Wera manual and machine socket (ISO 2725 part 3) can be used in manual and machine operations. With "Take it easy" tool finder with colour coding by size - for quick and easy identification of the required tool. Slip-proof for easy grip even with oily hands. With ball stop groove. For external hexagon screws and bolts. Made of dull-chromed chrome-vanadium.

Web link

https://products.wera.de/en/ratchets_and_accessories_the_zyklop_ratchets_the_zyklop_ratchets_3_8_zyklop_accessories_3_8_8790_hmb_deep.html

Wera - 8790 HMB Deep
05004531001 - 4013288210395

Wera Werkzeuge GmbH
Korzter Straße 21-25
D-42349 Wuppertal
Tel: +49 (0)2 02 / 40 45-0
E-Mail: info@wera.de

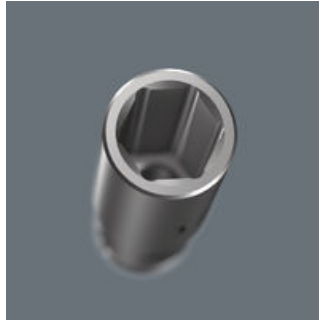
Zyklop Accessories, 3/8"

Long design



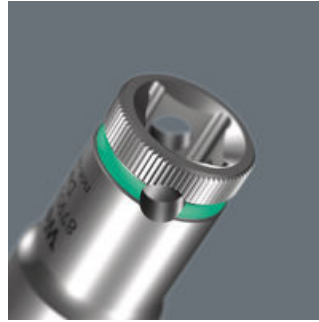
Due to the long design of the socket, screwdriving can also be achieved in small spaces. Fittings with protruding threaded rods are often also possible.

Profile-friendly power transmission



The hexagon profile allows the transmission of high forces and puts less strain on the edges of bolts or screw heads than a double hexagon profile. Fine-toothed ratchets also make the use of a double hexagon profile superfluous, even in confined spaces, thanks to their small return angle.

Knurling



Knurling on lower end for more grip when used manually.

Chrome vanadium steel



The chrome-vanadium steel version makes the plug-in tools suitable for heavy loads.

Take it easy tool finder system



Take it easy tool finder system - with profile and size colour-coding for quick and easy tool selection. Colour-coded system for hexagon drive screws (L-Keys, Zyklop bit sockets), external hex drive screws and nuts (Joker wrenches, Zyklop sockets and Zyklop bit sockets with holding function), and TORX® drive screws (L-Keys, Zyklop bit sockets).



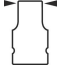

Web link

https://products.wera.de/en/ratchets_and_accessories_the_zyklop_ratchets_the_zyklop_ratchets_3_8_zyklop_accessories_3_8_8790_hmb_deep.html

Wera - 8790 HMB Deep
05004531001 - 4013288210395

Wera Werkzeuge GmbH
Korzter Straße 21-25
D-42349 Wuppertal
Tel: +49 (0)2 02 / 40 45-0
E-Mail: info@wera.de

Further versions in this product family:

| | |  |  |  |  |
|--------------------|--------------------|-----------------------------------------------------------------------------------|-----------------------------------------------------------------------------------|-------------------------------------------------------------------------------------|-------------------------------------------------------------------------------------|
| | | mm | mm | mm | mm |
| 05004530001 | luminous pink | 8.0 | 64.0 | 12.2 | 17.0 |
| 05004531001 | gruen_363C | 9.0 | 64.0 | 13.5 | 17.0 |
| 05004532001 | leuchtgelb_yellowC | 10.0 | 64.0 | 14.5 | 17.0 |
| 05004533001 | cyan_2985C | 11.0 | 64.0 | 15.7 | 17.0 |
| 05004534001 | schwarz_blackC | 12.0 | 64.0 | 16.5 | 18.0 |
| 05004535001 | tuerkis_339C | 13.0 | 64.0 | 19.0 | 17.0 |
| 05004536001 | pink_241C | 14.0 | 64.0 | 20.0 | 18.0 |
| 05004537001 | weiss | 15.0 | 64.0 | 22.0 | 20.0 |
| 05004538001 | violett_2735C | 16.0 | 64.0 | 22.0 | 20.0 |
| 05004539001 | rot_200C | 17.0 | 64.0 | 24.0 | 22.0 |
| 05004540001 | leuchtgruen_375C | 18.0 | 64.0 | 26.0 | 23.0 |
| 05004541001 | blau_307C | 19.0 | 64.0 | 26.0 | 23.0 |
| 05004542001 | luminous pink | 20.0 | 64.0 | 28.0 | 25.0 |
| 05004543001 | gruen_363C | 21.0 | 64.0 | 28.0 | 25.0 |
| 05004544001 | gelb_123C | 22.0 | 64.0 | 30.0 | 26.0 |

Web link
https://products.wera.de/en/ratchets_and_accessories_the_zyklop_ratchets_the_zyklop_ratchets_3_8_zyklop_accessories_3_8_8790_hmb_deep.html

Wera - 8790 HMB Deep
 05004531001 - 4013288210395

Wera Werkzeuge GmbH
 Korzter Straße 21-25
 D-42349 Wuppertal
 Tel: +49 (0)2 02 / 40 45-0
 E-Mail: info@wera.de