



IP44 waterproof rating
IP44 indice étanche
IP44 estanqueidad al agua
Grado impermeabile IP44
IP44 wasserdichte Bewertung
 IP44防水等級
 IP44防水仕様



Solar panel - 8-10 hours charge time
Panneau solaire - temps de charge de 8-10 heures
Panel solar - 8-10 horas de tiempo de carga
Pannello solare - 8-10 ore di carica
Sonnenkollektor - 8-10 Stunden Ladezeit
 太阳能电池板 - 8-10小时充电时间
 ソーラーパネル - 8-10時間の充電時間

Day and night auto sensor
Capteur automatique de jour et de nuit
Sensor automático de día y de noche
Sensore auto diurno e diurno
Tag und Nacht Auto Sensor
 日夜自动传感器
 昼夜自動センサー

1000 LUMENS
POWERFUL LED

UP TO 12M
MOTION SENSOR DETECTION

NO WIRING REQUIRED

ENERGY SAVING
AUTO DAY + NIGHT DETECTION

NO RUNNING COST
100% ENERGY SAVING

Robust Aluminium housing
Boîtier en aluminium robuste
Carcasa de aluminio robusta
Alloggiamento robusto in alluminio
Robustes Aluminiumgehäuse
 坚固的铝合金外壳
 丈夫なアルミニウムハウジング

Motion Sensor Detector - Up to 12m
Détecteur de capteur de mouvement - Jusqu 12m
Detector de Sensores de Movimiento - Hasta 12m
Rilevatore del sensore di movimento - Fino a 12m
Bewegungssensor-Detektor - Bis zu 12m
 运动传感器检测器 - 高达12m
 モーションセンサー検出器 - 最大12m

Safe disposal of waste electrical products, batteries and bulbs



If at any time, you need to dispose of this product or parts of this product: please note that waste electrical products, bulbs and batteries should not be disposed of with ordinary household waste. Recycle where facilities exist. Check with your local authority for recycling advice. Alternatively, NightSearcher is happy to take receipt of this product at end-of-life and will recycle it on your behalf.

Light output	Light 9W - Solar panel 3W
Light source	LED / Solar panel
Battery	7.4V 1800mA/h Li-ion
Product size (mm)	170x115x105mm
Product weight (g)	513g
NS Part No.	NSSOLARSENTRY1000
Supplied with	LED Light, Solar Panel & 3m cable

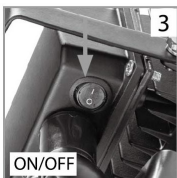
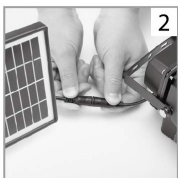
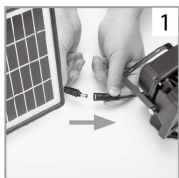


Installation Instructions

NOTE: This is a solar energy product, install in a location where the solar panel will receive direct sunlight away from shade. The longer it receives sunshine the longer it will be able to illuminate for. We recommend a minimum mounting height of 1.5 meters.

- Mount the light fitting using supplied fixings, for ideal performance onto a solid wall. Avoid positioning the light towards objects that may move in the wind such as trees or shrubs, or highly reflective surfaces. These issues may effect reliable triggering on the Motion sensor.

Connecting Solar Panel to the light:



There are three controls at the bottom of the Motion Sensor unit:

- 1) TIME (time the unit remains illuminated)
- 2) SENS sensitivity)
- 3) LUX (Day – Night setting).

Operational Instructions:

This product has 3 rotating dials to adjust the light's settings:

Lighting time (TIME):

Turn dial clockwise to increase the length of time the light is illuminated after being triggered, turn anti-clockwise to decrease lighting time (3secs -7minutes)

Sense distance (SENS):

Turn dial clockwise to increase the sensor's detection distance, turn anti-clockwise to decrease (0-12 meters).

Sensor environment (LUX):

Adjust dial to required operational times. Turn dial clockwise to increase sensitivity to luminosity levels (longer operational time), turn anti-clockwise to decrease sensitivity levels shorter operational time).

Warning: Keep the Solar panel clean to ensure best performance.



1 2 3