

8790 HMB Deep 3/8" socket, 13 x 64 mm

Zyklop Accessories, 3/8"



EAN:	4013288210432	Size:	130x44x20 mm
Part number:	05004535001	Weight:	77 g
Article number:	8790 HMB Deep	Country of origin:	TW
		Customs tariff number:	82042000

- Long sockets for low-lying screwdriving, often even with protruding threaded rods in small spaces
- Hexagonal profile enables precise bolting with high power transmission and preserves the profile
- With Take it easy tool finder: colour coding by size
- Knurling at lower end to enable easy gripping when used in manual applications
- For manual and machine operation (non-impact), ball intercept ring
- Made of matt chromed chrome-vanadium

The Wera manual and machine socket (ISO 2725 part 3) can be used in manual and machine operations. With "Take it easy" tool finder with colour coding by size - for quick and easy identification of the required tool. Slip-proof for easy grip even with oily hands. With ball stop groove. For external hexagon screws and bolts. Made of dull-chromed chrome-vanadium.

Web link

https://products.wera.de/en/ratchets_and_accessories_the_zyklop_ratchets_the_zyklop_ratchets_3_8_zyklop_accessories_3_8_8790_hmb_deep.html

Wera - 8790 HMB Deep
05004535001 - 4013288210432

Wera Werkzeuge GmbH
Korzter Straße 21-25
D-42349 Wuppertal
Tel: +49 (0)2 02 / 40 45-0
E-Mail: info@wera.de

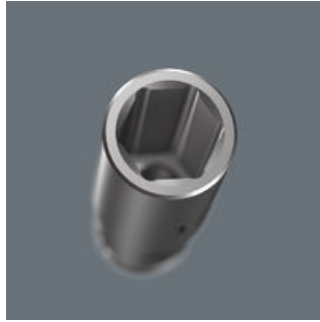
Zyklop Accessories, 3/8"

Long design



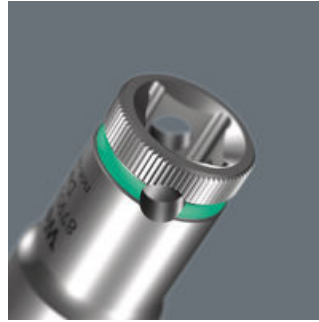
Due to the long design of the socket, screwdriving can also be achieved in small spaces. Fittings with protruding threaded rods are often also possible.

Profile-friendly power transmission



The hexagon profile allows the transmission of high forces and puts less strain on the edges of bolts or screw heads than a double hexagon profile. Fine-toothed ratchets also make the use of a double hexagon profile superfluous, even in confined spaces, thanks to their small return angle.

Knurling



Knurling on lower end for more grip when used manually.

Chrome vanadium steel



The chrome-vanadium steel version makes the plug-in tools suitable for heavy loads.

Take it easy tool finder system



Take it easy tool finder system - with profile and size colour-coding for quick and easy tool selection. Colour-coded system for hexagon drive screws (L-Keys, Zyklop bit sockets), external hex drive screws and nuts (Joker wrenches, Zyklop sockets and Zyklop bit sockets with holding function), and TORX® drive screws (L-Keys, Zyklop bit sockets).




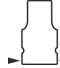
Web link

https://products.wera.de/en/ratchets_and_accessories_the_zyklop_ratchets_the_zyklop_ratchets_3_8_zyklop_accessories_3_8_8790_hmb_deep.html

Wera - 8790 HMB Deep
05004535001 - 4013288210432

Wera Werkzeuge GmbH
Korzter Straße 21-25
D-42349 Wuppertal
Tel: +49 (0)2 02 / 40 45-0
E-Mail: info@wera.de

Further versions in this product family:

					
		mm	mm	mm	mm
05004530001	luminous pink	8.0	64.0	12.2	17.0
05004531001	gruen_363C	9.0	64.0	13.5	17.0
05004532001	leuchtgelb_yellowC	10.0	64.0	14.5	17.0
05004533001	cyan_2985C	11.0	64.0	15.7	17.0
05004534001	schwarz_blackC	12.0	64.0	16.5	18.0
05004535001	tuerkis_339C	13.0	64.0	19.0	17.0
05004536001	pink_241C	14.0	64.0	20.0	18.0
05004537001	weiss	15.0	64.0	22.0	20.0
05004538001	violett_2735C	16.0	64.0	22.0	20.0
05004539001	rot_200C	17.0	64.0	24.0	22.0
05004540001	leuchtgruen_375C	18.0	64.0	26.0	23.0
05004541001	blau_307C	19.0	64.0	26.0	23.0
05004542001	luminous pink	20.0	64.0	28.0	25.0
05004543001	gruen_363C	21.0	64.0	28.0	25.0
05004544001	gelb_123C	22.0	64.0	30.0	26.0

Web link

https://products.wera.de/en/ratchets_and_accessories_the_zyklop_ratchets_the_zyklop_ratchets_3_8_zyklop_accessories_3_8_8790_hmb_deep.html

Wera - 8790 HMB Deep
05004535001 - 4013288210432

Wera Werkzeuge GmbH
Korzter Straße 21-25
D-42349 Wuppertal
Tel: +49 (0)2 02 / 40 45-0
E-Mail: info@wera.de