

# 454 HF T-handle hexagon screwdriver Hex-Plus with holding function, 10 x 200 mm

Series 400 T-Handle



<b>EAN:</b>	4013288208064	<b>Size:</b>	247x118x22 mm
<b>Part number:</b>	05023355001	<b>Weight:</b>	235 g
<b>Article number:</b>	454 HF	<b>Country of origin:</b>	CZ
		<b>Customs tariff number:</b>	82054000

- T-handle screwdriver for the transmission of particularly high tightening and loosening moments
- Ergonomic 2-component handle with finger handle recesses and pleasant surface feel for very high power transmission and fatigue-free working.
- With additional short arm for the transmission of extremely high torques due to the leverage of the long arm
- Take it easy tool finder: colour coding according to profile and size
- With holding function (HF) on the long arm to securely hold the screw on the tool

T-handle screwdriver: The ideal handle shape to allow high torque transmission in difficult tightening and loosening situations. The ergonomic shape of the handle fills the palm of the hand well, the fingers lie safely in the soft rounded handle recesses. The whole hand makes contact with the handle and friction losses between the hand and the handle are avoided. With holding function (HF) to securely hold the hexagon socket screw on the tool. Special surface treatment of the blades for high corrosion protection and an optimum fit in the screw head.

## Web link

[https://products.wera.de/en/screwdrivers\\_series\\_400\\_t-handle\\_454\\_hf.html](https://products.wera.de/en/screwdrivers_series_400_t-handle_454_hf.html)

Wera - 454 HF  
05023355001 - 4013288208064

Wera Werkzeuge GmbH  
Korzter Straße 21-25  
D-42349 Wuppertal  
Tel: +49 (0)2 02 / 40 45-0  
E-Mail: [info@wera.de](mailto:info@wera.de)

Series 400 T-Handle

**Ergonomic 2-component T-handle**



The ergonomically shaped 2-component T-handle with finger recesses and pleasant surface facilitates very high power transmission and fatigue-free working.

**Holding function (HF) for hexagon socket screws**



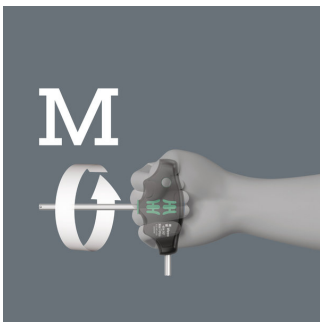
A resilient ball ensures the hexagon socket screw to be clamped on the tool tip. Especially helpful in hard to reach areas where you can not use your other hand to hold the screw.

**Second arm**



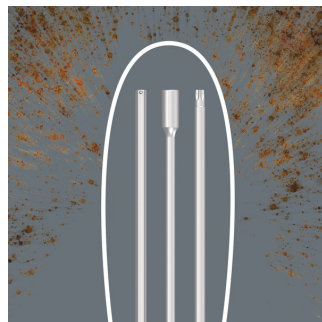
The additional short arm, which emerges laterally from the handle, allows the transmission of extremely high torques by using the long arm as a lever.

**High torque transfer**



By using the blade as an extension of your lower arm you can transfer particularly high torque.

**Corrosion protection and fitting accuracy**



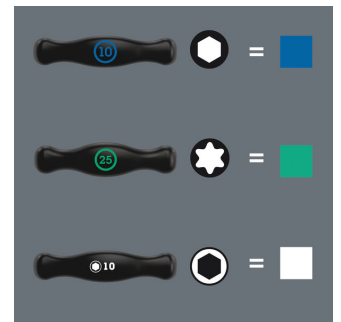
Due to the special surface treatment, the blades receive a high level of corrosion protection. The optimum fitting accuracy of the screw is also guaranteed.

**Hex-Plus**



Hexagon socket screws are a problem, because the contact surfaces that transfer the force of the tool to the screw are very narrow. The consequence: the head of the screw can be damaged, usually rounding out the recess. Hex-Plus tools have larger contact surfaces to prevent this, driving from the flats of the recess, rather than the corners. Good to know: Hex-Plus tools fit into every standard hexagon socket screw!

**“Take it easy” Tool Finder**



Screwdrivers with “Take it easy” tool finder: colour coding according to profile and size stamp.

**Web link**

[https://products.wera.de/en/screwdrivers\\_series\\_400\\_t-handle\\_454\\_hf.html](https://products.wera.de/en/screwdrivers_series_400_t-handle_454_hf.html)

Wera - 454 HF

05023355001 - 4013288208064

Wera Werkzeuge GmbH







Korzter Straße 21-25

D-42349 Wuppertal

Tel: +49 (0)2 02 / 40 45-0

E-Mail: [info@wera.de](mailto:info@wera.de)

Further versions in this product family:

						
		mm	mm	mm	mm	inch
05023334001	3	100	15	38	77	4
05023338001	4	100	15	38	77	4
05023339001	4	150	15	38	77	6
05023340001	4	200	15	38	77	8
05023342001	5	100	20	49	99	4
05023343001	5	150	20	49	99	6
05023344001	5	200	20	49	99	8
05023346001	6	100	20	49	99	4
05023347001	6	150	20	49	99	6
05023348001	6	200	20	49	99	8
05023350001	7	200	20	49	99	8
05023351001	8	100	20	49	99	4
05023352001	8	150	20	49	99	6
05023353001	8	200	20	49	99	8
05023354001	10	100	20	49	99	4
<b>05023355001</b>	<b>10</b>	<b>200</b>	<b>20</b>	<b>49</b>	<b>99</b>	<b>8</b>

## Web link

[https://products.wera.de/en/screwdrivers\\_series\\_400\\_t-handle\\_454\\_hf.html](https://products.wera.de/en/screwdrivers_series_400_t-handle_454_hf.html)

Wera - 454 HF

05023355001 - 4013288208064

Wera Werkzeuge GmbH

Korzter Straße 21-25

D-42349 Wuppertal

Tel: +49 (0)2 02 / 40 45-0

E-Mail: info@wera.de