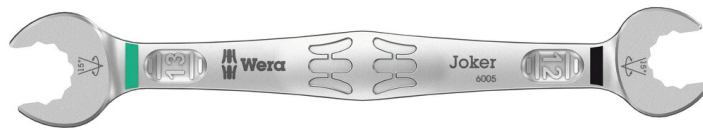


6005 Joker Double open-ended wrenches, 12 x 13 x 166 mm

6005 Joker Double open-ended wrench



| | | | |
|------------------------|-------------------|-------------------------------|--------------|
| EAN: | 4013288224903 | Size: | 165x55x17 mm |
| Part number: | 05020313001 | Weight: | 88 g |
| Article number: | 6005 Joker Double | Country of origin: | TW |
| | | Customs tariff number: | 84661038 |

- Double open-ended wrench
- Especially suitable for tight spaces
- The special mouth geometry expands the placement possibilities of the tool
- The low return angle in the mouth "takes" the screw every 15°
- With Take it easy tool finder: colour coding by size

As the installation space becomes increasingly tight during screwdriving, it is necessary that tools enable users to work successfully even in such situations. Narrow spaces require additional placement points of the tool. Can spanners be modified to increase the placement possibilities of the tool? The combination of the 7.5° pivoted mouths and the double hexagon geometry doubles the placement points. A repeated 180° turn of the wrench around the longitudinal axis during screwdriving provides four placement possibilities, and bolts or screw heads can be engaged every 15°. The Joker 6005 with its smart mouth geometry significantly expands the range of uses in confined spaces. The Joker 6005 will automatically find the respective placement point after every turn. The high-quality surface treatment achieves a high and long-lasting corrosion protection. With Take it easy tool finder: Colour coding by size.



Web link

https://products.wera.de/en/joker_6005_joker_double_open-ended_wrench_6005_joker_double.html

Wera - 6005 Joker Double
05020313001 - 4013288224903

Wera Werkzeuge GmbH
Korzerter Straße 21-25
D-42349 Wuppertal
Tel: +49 (0)2 02 / 40 45-0
E-Mail: info@wera.de

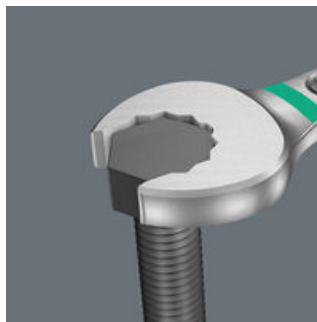
6005 Joker Double open-ended wrench

For very tight spaces



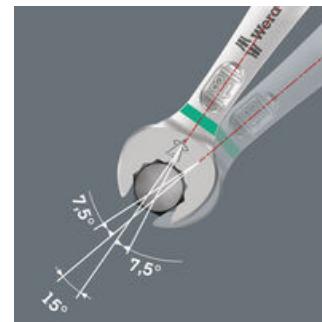
The Joker 6005 double open-ended wrench with its special mouth design - a 7.5° pivoted mouth and double hexagon geometry - doubles the placement points at a repeated 180° rotation of the wrench around the longitudinal axis. Bolts and screw heads can be engaged every 15°. The Joker 6005 will automatically find the respective placement point after every turn.

Double-hex geometry



The double hexagonal geometry of the mouth of the Joker 6005 double open-ended wrench ensures the positive connection with the screw head or the bolt and reduces the risk of slipping.

For pivoting angles under 30°



Thanks to the 7.5° pivoted mouths, the double hexagon geometry and an improved application method (placement - screwdriving - rotation - replacement - screwdriving - rotation etc), even screwdriving situations that have a pivoting angle of less than 30° can be solved.

“Take it easy” tool finder



Take it easy tool finder system - with profile and size colour-coding for quick and easy tool selection. Colour-coded system for hexagon drive screws (L-Keys, Zyklop bit sockets), external hex drive screws and nuts (Joker wrenches, Zyklop sockets and Zyklop bit sockets with holding function), and TORX® drive screws (L-Keys, Zyklop bit sockets).

Web link

https://products.wera.de/en/joker_6005_joker_double_open-ended_wrench_6005_joker_double.html

Wera - 6005 Joker Double
05020313001 - 4013288224903





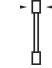
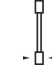
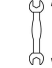
Wera Werkzeuge GmbH
Korzerter Straße 21-25
D-42349 Wuppertal
Tel: +49 (0)2 02 / 40 45-0
E-Mail: info@wera.de

6005 Joker Double open-ended wrenches, 12 x 13 x 166 mm

6005 Joker Double open-ended wrench



Further versions in this product family:

| | |  |  |  |  |  |  |  |
|--------------------|--|---|---|---|---|---|---|---|
| | | mm | mm | mm | mm | mm | mm | mm |
| 05020310001 | blau_307C/ge lb_123C | 6 | 16 | 7 | 17.7 | 4 | 4.2 | 111.8 |
| 05020311001 | leuchtpink_23 2C/gruen_36 3C | 8 | 19 | 9 | 21 | 4.5 | 4.8 | 122.2 |
| 05020312001 | leuchtgelb_yel lowC/cyan_29 85C | 10 | 23 | 11 | 25 | 5 | 5 | 137.3 |
| 05020313001 | schwarz_bla ckC/tuerkis_ 339C | 12 | 26 | 13 | 27 | 5.5 | 6 | 166 |

Web link

https://products.wera.de/en/joker_6005_joker_double_open-ended_wrench_6005_joker_double.html

Wera - 6005 Joker Double
05020313001 - 4013288224903

Wera Werkzeuge GmbH
Korzerter Straße 21-25
D-42349 Wuppertal
Tel: +49 (0)2 02 / 40 45-0
E-Mail: info@wera.de