

# Wera 2go E 1 Tool set for electricians, 73 pieces

Wera 2go



**EAN:** 4013288221278  
**Part number:** 05134025001  
**Article number:** Wera 2go E 1

**Size:** 370x345x140 mm  
**Weight:** 7300 g  
**Country of origin:** DE (05)  
**Customs tariff number:** 82032000

- Extensive 73-piece tool set in the compact Wera 2go 2 tool container for electricians in mobile operations
- Premium brand tools by Wera, Jung, KNIPEX®, Lyra®, PICARD®, PUK® and Stabila®
- Wera Kraffform Kompakt Turbo i 1 (16-piece handle/interchangeable blades VDE set) for four times the screwdriving speed and Wera 8100 SA 6 Zyklop Speed ratchet set (1/4", 28-piece set)
- Joker 6004 S self-setting spanner for bolts and screws of 10-13mm (metric) and 7/16"-1/2" (imperial)
- With chiseldriver for screwdriving, chiselling, mortising as well as 4 VDE screwdrivers - 2 of which with stainless steel blade to prevent extraneous rust

Compact tool set with the 73 most important tools for electricians with products by Wera, Jung, KNIPEX®, Lyra®, PICARD®, PUK® and Stabila®. Mobility is made considerably easier thanks to the compact tool container from the Wera 2go system.

**Web link**

[https://products.wera.de/en/wera\\_2go\\_wera\\_2go\\_e\\_1.html](https://products.wera.de/en/wera_2go_wera_2go_e_1.html)

Wera - Wera 2go E 1  
 05134025001 - 4013288221278

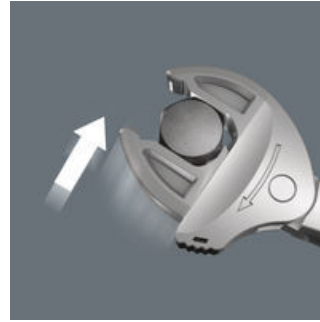


**Fast movers**



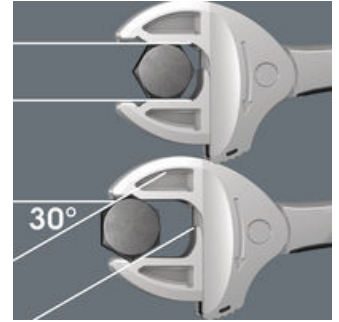
The Zyklop Speed ratchets are really fast movers. The gyrating mass design means that screwdriving is accelerated. The rotation-symmetric structure of the Kraftform handle and the free-turning sleeve reinforce this rapid twisting process, particularly when the ratchet does not engage due to too little resistance in the thread.

**Joker 6004: Automatically and continuously self-setting**



With its automatically and continuously gripping parallel jaws the Joker spanner 6004 covers all dimensions in the respective field of application. The tool automatically finds the required size when placed on the bolt or screw, no setting required.

**Joker 6004: Small return angle**



Thanks to the corner-width rectangular prisms, a return angle of only 30° can be achieved.

**Web link**

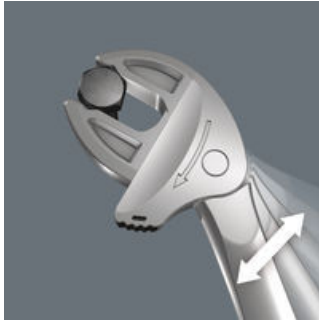
[https://products.wera.de/en/wera\\_2go\\_wera\\_2go\\_e\\_1.html](https://products.wera.de/en/wera_2go_wera_2go_e_1.html)

Wera - Wera 2go E 1  
05134025001 - 4013288221278

Wera Werkzeuge GmbH  
Korzter Straße 21-25  
D-42349 Wuppertal  
Tel: +49 (0)2 02 / 40 45-0  
E-Mail: [info@wera.de](mailto:info@wera.de)

Wera 2go

**Joker 6004: Ratchet mechanism for fast work**



The ratchet function in the mouth sees to fast and consistent screwdriving without removing the tool.

**Wera Stainless Steel Tools.**



Solution to the rust problem: screwdriving stainless steel together with stainless steel! Wera stainless steel tools are manufactured out of stainless steel so unsightly rust can be avoided.

**Kraftform Kompakt Turbo VDE**



Many users would like to be able to carry out screwdriving processes faster without compromise. With a screwdriver that is precise, allows powerful screwdriving, and is much faster than a conventional screwdriver. A part-time universal gear is the solution: Integrated in the screwdriver handle, it quadruples the working speed with smooth couplings - purely mechanically. One hand holds the front part of the handle, the other hand turns the rear part of the handle. The turbo function can be switched on or off at the push of a button. Turning it off is recommended for tightening and loosening with high torque, e.g. for screw connections in wood, as well as for fine adjustments. Robust, maintenance-free gear made of steel with a maximum torque of 14 Nm when the turbo function is deactivated. With the Wera VDE interchangeable blades individually tested as per IEC 60900, the VDE version of the Kraftform Turbo hand holder 827 T i guarantees fast and safe working even in live environments (up to 1,000 volts).

**L-keys with retaining function for hexagon socket screws**



The clamping of the screw is achieved by a flexible locking ball. The holding function is especially helpful in confined, hard-to-reach spaces, where there is no room for a second hand to secure the screw on the tool.

**Web link**

[https://products.wera.de/en/wera\\_2go\\_wera\\_2go\\_e\\_1.html](https://products.wera.de/en/wera_2go_wera_2go_e_1.html)

Wera - Wera 2go E 1  
05134025001 - 4013288221278

Wera Werkzeuge GmbH  
Korzter Straße 21-25  
D-42349 Wuppertal  
Tel: +49 (0)2 02 / 40 45-0  
E-Mail: [info@wera.de](mailto:info@wera.de)

# Wera 2go E 1 Tool set for electricians, 73 pieces



Wera 2go

Set contents:

## Wera 2go 2 Tool Container, 3 pieces

05004351001 1x 3 pieces



## 8100 SA 6 Zyklop Speed Ratchet Set, 1/4" drive, metric, 28 pieces



05004016001 1x 28 pieces



## 950/9 Hex-Plus Multicolour HF 1 L-key set, metric, BlackLaser, with holding function, 9 pieces



05022210001 1x 9 pieces



## Kraftform Kompakt Turbo i 1, 16 pieces



05057484001 1x 16 pieces



## 932 A Screwdriver for slotted screws, 1.2 x 7 x 125 mm



05018266001 1x 1.2 x 7 x 125 mm



## 3162 i PH VDE Insulated screwdriver for Phillips screws, stainless, PH 2 x 100 mm



05022734001 1x PH 2 x 100 mm



## 3165 i PZ VDE Insulated screwdriver for Pozidriv screws, stainless, PZ 2 x 100 mm



05022741001 1x PZ 2 x 100 mm



Web link

[https://products.wera.de/en/wera\\_2go\\_wera\\_2go\\_e\\_1.html](https://products.wera.de/en/wera_2go_wera_2go_e_1.html)

Wera - Wera 2go E 1  
05134025001 - 4013288221278

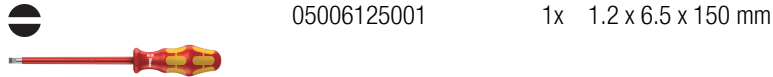
Wera Werkzeuge GmbH  
Korzter Straße 21-25  
D-42349 Wuppertal  
Tel: +49 (0)2 02 / 40 45-0  
E-Mail: [info@wera.de](mailto:info@wera.de)

# Wera 2go E 1 Tool set for electricians, 73 pieces

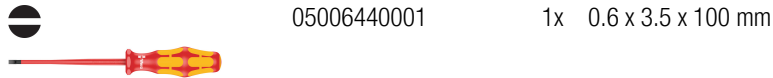


## Wera 2go

### 160 i VDE Insulated screwdriver for slotted screws, 1.2 x 6.5 x 150 mm



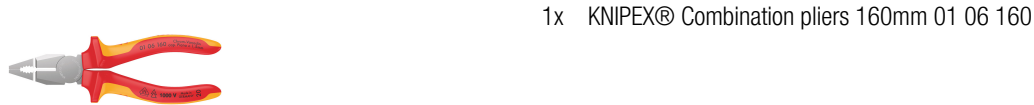
### 160 iS VDE Insulated screwdriver with reduced blade diameter for slotted screws, 0.6 x 3.5 x 100 mm



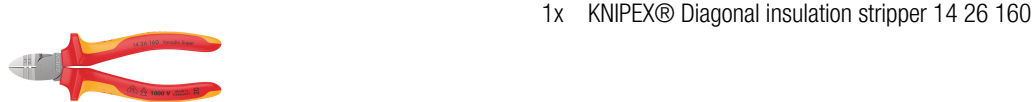
### 6004 Joker S self-setting spanner, 10-13 x 7/16-1/2" x 154 mm



### KNIPEX® Combination pliers 160mm 01 06 160



### KNIPEX® Diagonal insulation stripper 14 26 160



### KNIPEX Snipe nose pliers with blade (stork beak pliers) 26 16 200



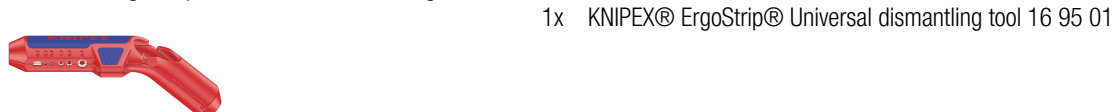
### KNIPEX® Cobra® VDE Hightech water pump pliers, insulated, 87 26 250



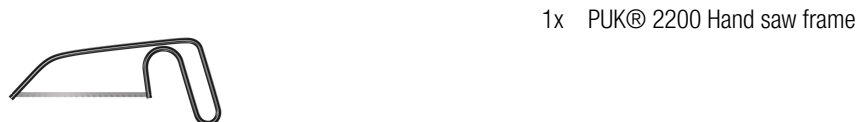
### KNIPEX® Cable knife 98 52



### KNIPEX® ErgoStrip® Universal dismantling tool 16 95 01



### PUK® 2200 Hand saw frame



### Lyra® Construction marker DRY PROFI 4494202



#### Web link

[https://products.wera.de/en/wera\\_2go\\_wera\\_2go\\_e\\_1.html](https://products.wera.de/en/wera_2go_wera_2go_e_1.html)

Wera - Wera 2go E 1  
05134025001 - 4013288221278

Wera Werkzeuge GmbH  
Korzter Straße 21-25  
D-42349 Wuppertal  
Tel: +49 (0)2 02 / 40 45-0  
E-Mail: [info@wera.de](mailto:info@wera.de)

## Wera 2go E 1 Tool set for electricians, 73 pieces



Wera 2go

**STABILA® Spirit level Pocket Electric 17775**

1x STABILA® Spirit level Pocket Electric 17775



**STABILA® Spirit level type 70, 30 cm, 02281**

1x STABILA® Spirit level type 70, 30 cm, 02281



**STABILA® Wooden folding rule type 607, 2 m, yellow, 01104**

1x STABILA® Wooden folding rule type 607, 2 m, yellow, 01104



**PICARD® Fitter's hammer 400 g, German shape, 000101-0400**

1x PICARD® Fitter's hammer 400 g, German shape, 000101-0400



**Jung Plastering cup 127mm, 946 127 00**

1x Jung Plastering cup 127mm, 946 127 00



**Jung Scraping knife with natural wood handle, 922 050 00**

1x Jung Scraping knife with natural wood handle, 922 050 00



### Web link

[https://products.wera.de/en/wera\\_2go\\_wera\\_2go\\_e\\_1.html](https://products.wera.de/en/wera_2go_wera_2go_e_1.html)

Wera - Wera 2go E 1  
05134025001 - 4013288221278

Wera Werkzeuge GmbH  
Korzter Straße 21-25  
D-42349 Wuppertal  
Tel: +49 (0)2 02 / 40 45-0  
E-Mail: [info@wera.de](mailto:info@wera.de)