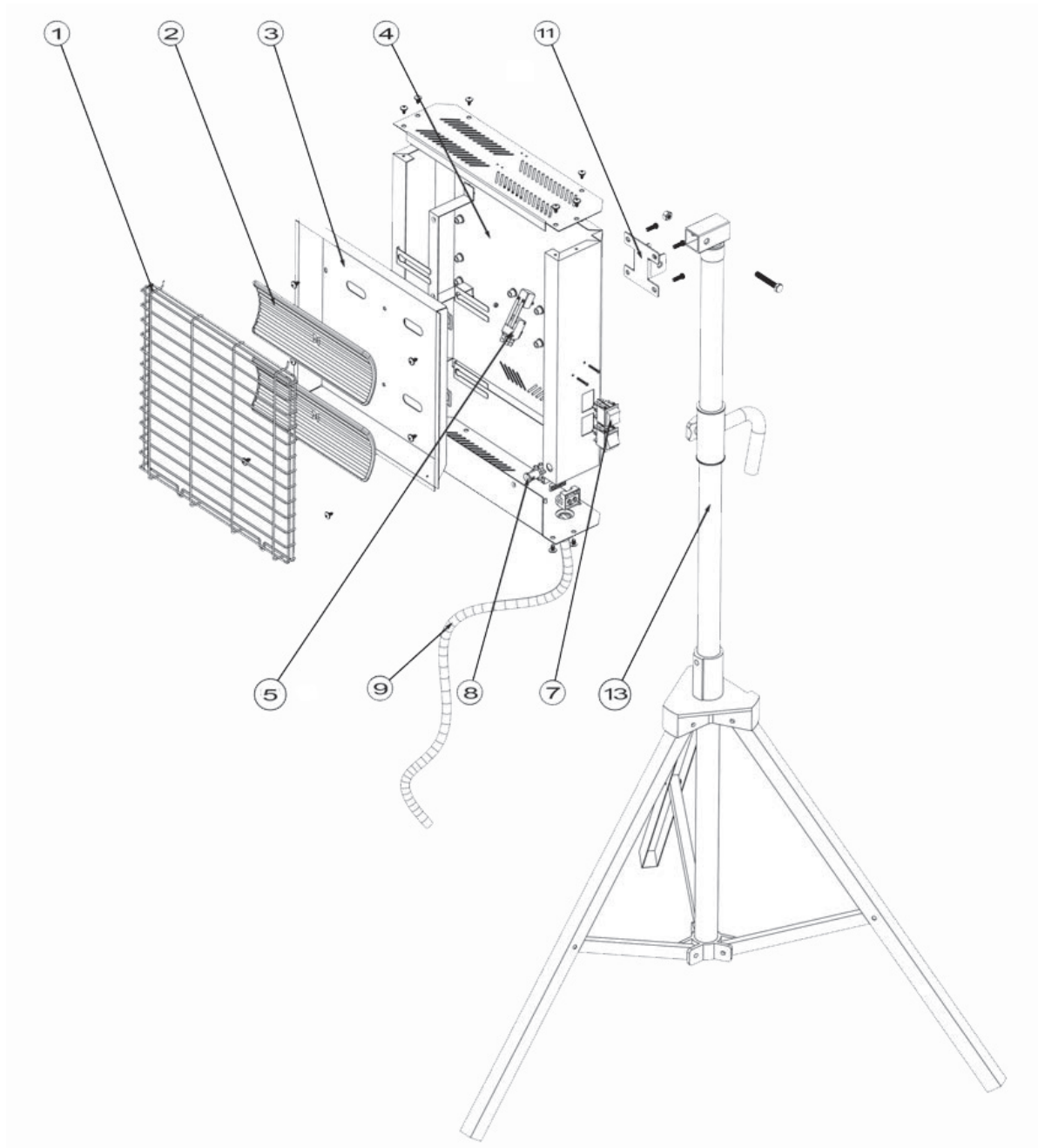


Parts Information:  
**Ceramic Heater with Telescopic Tripod  
 Stand 1.4/2.8kW 230V  
 Model No: CH2800S**



Item	Part No.	Description
1	CH28110VS.01	METAL FRONT GRILLE
2	CH2800.V2-03	HEATING ELEMENT 230v (4 WIRES)
3	CH28110VS.03	REFLECTOR
4	CH2800S.04	HOUSING
5	CH28110VS.05	TILT SWITCH
7	CH28110VS.07	MAIN SWITCH 15A 250VAC

Item	Part No.	Description
8	CH28110VS.08	INDICATOR LAMP
9	MC3CX1.5R	MAINS CABLE BLK, 3 CORE (RUBBER) 1.5MM2
11	CH2800S.11	FIXED BRACKET
--	CH2800S.12	UPRIGHT SHAFT (c/w FIXED BRACKET) (not shown)
13	CH2800S.13	TRIPOD

**NOTE:** It is our policy to continually improve products and as such we reserve the right to alter data, specifications and component parts without prior notice.

**IMPORTANT:** No liability is accepted for incorrect use of product.

**WARRANTY:** Guarantee is 12 months from purchase date, proof of which will be required for any claim.

**Sealey Group**, Kempson Way, Suffolk Business Park, Bury St Edmunds, Suffolk. IP32 7AR



01284 757500



01284 703534



sales@sealey.co.uk



www.sealey.co.uk