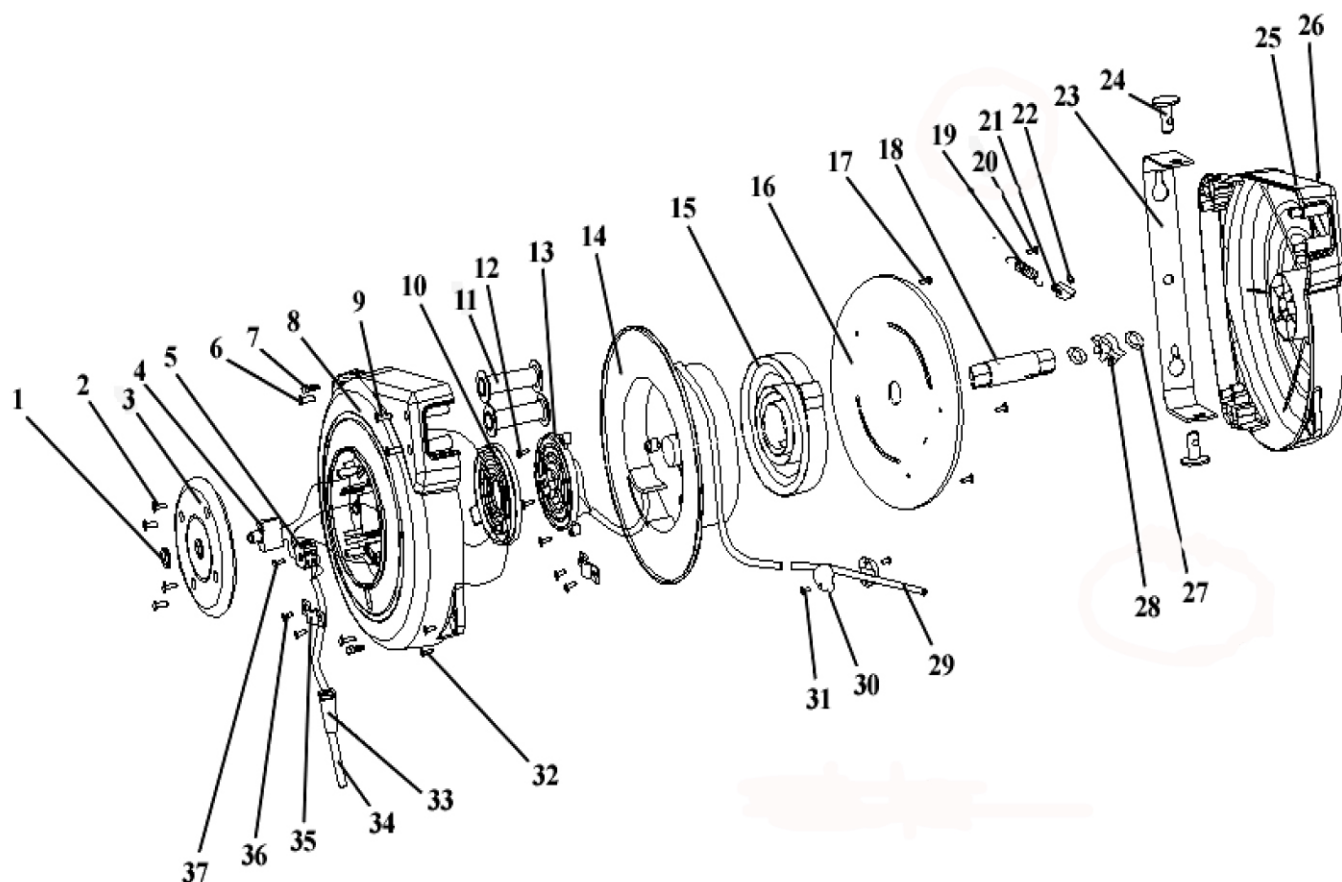


Parts Information: Cable Reel System Retractable 15mtr 2 x 230V Socket Model No: CRM15.V5



Item	Part No.	Description
1	CRM15.V5-01	PLASTIC NUT
2	CRM15.V5-02	SCREW (ST4.2X19)
3	CRM15.V5-03	PLASTIC COVER
4	CRM15.V5-04	THERMAL CUT-OUT
5	CRM15.V5-05	THERMAL BLOCK
6	CRM15.V5-06	SCREW (ST4X20)
7	CRM15.V5-07	SCREW (M5X25)
8	CRM15.V5-08	COVER (LEFT SIDE)
9	CRM15.V5-09	SCREW (ST5X30)
10	CRM15.V5-10	FIXED PLATE ASS'Y
11	CRM15.V5-11	GUIDE ROLLER
12	CRM15.V5-12	SCREW (ST4X19)
13	CRM15.V5-13	MOVEABLE PLATE ASS'Y
14	CRM15.V5-14	DRUM
15	CRM15.V5-15	SPRING
16	CRM15.V5-16	DRUM
17	CRM15.V5-17	SCREW (ST4X12)
18	CRM15.V5-18	AXEL
19	CRM15.V5-19	EXTENSION SPRING

Item	Part No.	Description
20	CRM15.V5-20	SCREW (ST3X12)
21	CRM15.V5-21	RATCHET PAWL
22	CRM15.V5-22	SNAP RING
23	CRM15.V5-23	WALL MOUNTING BRACKET
24	CRM15.V5-24	PIN FOR WALL BRACKET
25	CRM15.V5-25	COVER (RIGHT SIDE)
26	SN5.S	STEEL NUT M5 ZINC DIN934 (SINGLE)
27	CRM15.V5-27	HEXAGONAL GASKETS
28	CRM15.V5-28	RACHET AXLE
29	CRM15.V5-29	CABLE 15mtr
30	CRM15.V5-30	STOP BLOCK(INCL PART 31)
31	CRM15.V5-31	SCREW (ST3X16) (LSA)
32	CRM15.V5-32	SCREW(ST5X14)
33	CRM15.V5-33	PROTECH SHEATH
34	CRM15.V5-34	FLEXIBLE CORD(1.5MTR)
35	CRM15.V5-35	CORD CLAMP
36	CRM15.V5-36	SCREW(ST2.9X9.5)
37	CRM15.V5-37	SCREW(ST4X16)
--	CRM15.V5-S	SOCKET FOR CRM15 (NOT SHOWN)

NOTE: It is our policy to continually improve products and as such we reserve the right to alter data, specifications and component parts without prior notice.

IMPORTANT: No liability is accepted for incorrect use of product.

WARRANTY: Guarantee is 12 months from purchase date, proof of which will be required for any claim.

Sealey Group, Kempson Way, Suffolk Business Park, Bury St Edmunds, Suffolk. IP32 7AR



01284 757500



01284 703534



sales@sealey.co.uk



www.sealey.co.uk