



20L WET & DRY VALETING MACHINE WITH ACCESSORIES 1250W

MODEL NO: **PC310**

Thank you for purchasing a Sealey product. Manufactured to a high standard, this product will, if used according to these instructions, and properly maintained, give you years of trouble free performance.

IMPORTANT: PLEASE READ THESE INSTRUCTIONS CAREFULLY. NOTE THE SAFE OPERATIONAL REQUIREMENTS, WARNINGS & CAUTIONS. USE THE PRODUCT CORRECTLY AND WITH CARE FOR THE PURPOSE FOR WHICH IT IS INTENDED. FAILURE TO DO SO MAY CAUSE DAMAGE AND/OR PERSONAL INJURY AND WILL INVALIDATE THE WARRANTY. KEEP THESE INSTRUCTIONS SAFE FOR FUTURE USE.



Refer to instructions



Wear protective gloves



Wear protective clothing

1. SAFETY

1.1. ELECTRICAL SAFETY

- ❑ **WARNING!** It is the user's responsibility to check the following:

Check all electrical equipment and appliances to ensure that they are safe before using. Inspect power supply leads, plugs and all electrical connections for wear and damage. Ensure the risk of electric shock is minimised by the installation of appropriate safety devices. An RCCB (Residual Current Circuit Breaker) should be incorporated in the main distribution board. We recommend that an RCD (Residual Current Device) is used with all electrical products. It is particularly important to use an RCD with portable products that are plugged into a supply not protected by an RCCB. If in doubt consult a qualified electrician. You may obtain an RCD by contacting your local Sealey dealer. Electrical safety information, it is important that the following information is read and understood.

- 1.1.1. The Electricity at Work Act 1989 requires that all portable electrical appliances, if used on business premises, are tested by a qualified electrician, using a Portable Appliance Tester (PAT), at least once a year.

- 1.1.2. The Health & Safety at Work Act 1974 makes owners of electrical appliances responsible for the safe condition of those appliances and the safety of the appliance operators. If in any doubt about electrical safety, contact a qualified electrician.

- 1.1.3. Ensure that the insulation on all cables and on the appliance is safe before connecting it to the power supply. See 1.1.1. and use a **PORTABLE APPLIANCE TESTER**

- 1.1.4. Ensure that cables are always protected against short circuit and overload.

- 1.1.5. Regularly inspect power supply cables and plugs for wear or damage and check all connections to ensure that they are secure.

IMPORTANT: Ensure that the voltage rating on the appliance suits the power supply to be used and that the plug is fitted with the correct fuse - see fuse rating in these instructions.

- × **DO NOT** pull or carry the appliance by the power cable.
- × **DO NOT** pull the plug from the socket by the cable. Remove the plug from the socket by maintaining a firm grip on the plug.
- × **DO NOT** use worn or damaged cables, plugs or connectors. Ensure that any faulty item is repaired or replaced immediately by a qualified electrician.

- 1.1.6. This product is fitted with a BS1363/A 13 Amp 3 pin plug. If the cable or plug is damaged, remove from use and ensure that repairs are carried out by a qualified electrician.

Replace a damaged plug with a BS1363/A 13A 3 pin plug. If in doubt contact a qualified electrician.


a) Connect the GREEN/YELLOW earth wire to the earth terminal 'E'.

b) Connect the BROWN live wire to the live terminal 'L'.

c) Connect the BLUE neutral wire to the neutral terminal 'N'.

d) After wiring, check that there are no bare wires and ensure that all wires have been correctly connected.

Ensure that the cable outer sheath extends beyond the cable restraint and that the restraint is tight.

Double insulated products are marked with the Class II symbol;  Class II products are wired with live (brown) and neutral (blue) only.

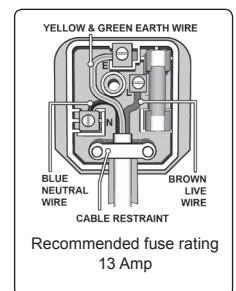
To rewire, connect the wires as indicated in diagram. **DO NOT** connect either wire to the earth terminal.

- 1.1.7. Products which require more than 13 amps are supplied without a plug. Contact a qualified electrician to ensure that a suitably rated supply is available. Ensure that an industrial round pin plug and socket are fitted by a qualified electrician.

- 1.1.8. If an extension cable reel is used, ensure that it is fully unwound before connection. Use a reel that includes an RCD, an appliance will be protected by the RCD. The cable core section is important and should be at least 1.5mm². Ensure that the cable of the reel is appropriate for this product. We recommend the use of 2.5mm² core section cable.

1.2. GENERAL SAFETY

- ❑ **WARNING!** Disconnect the cleaner from the power supply before servicing, changing accessories, or performing any maintenance.
- ✓ Use only genuine parts and accessories. Unauthorised parts and accessories may be dangerous and will invalidate your warranty.
- ✓ Maintain the cleaner in good condition. Use an authorised agent for servicing. Keep machine clean, but **DO NOT** use solvents.
- × **DO NOT** operate the unit without the locking cartridge filter in place (except when wet vacuuming when the foam sleeve filter is used). Using the cleaner without a locking cartridge filter will cause machine faults and will invalidate your warranty.
- ✓ Wear protective clothing and gloves.
- × **DO NOT** allow children or untrained persons to operate the cleaner.
- × **DO NOT** place attachments close to your face (especially eyes, ears, etc). **DO NOT** point the hose end at other persons or animals.
- ▲ **DANGER! DO NOT** vacuum hot or glowing ash, cigarette ends, inflammable, explosive, corrosive or other dangerous substances.
- × **DO NOT** leave machine running unattended. Turn power supply OFF and **DO NOT** leave the vicinity until motor has come to a complete stop.
- × **DO NOT** operate the cleaner while under the influence of drugs, alcohol or impairing medication, or if you are tired.
- × **DO NOT** use the cleaner in the rain or in very damp conditions.
- ❑ **WARNING!** The warnings, cautions and instructions in this manual cannot cover all possible conditions and situations that may occur. **IMPORTANT:** It must be understood by the operator that common sense and caution are factors which cannot be built into this product, but must be applied by the operator.



NOTE: This appliance can be used by children aged from 8 years and above and persons with reduced physical, sensory or mental capabilities or lack of experience and knowledge if they have been given supervision or instruction concerning use of the appliance in a safe way and understand the hazards involved. Children shall not play with the appliance. Cleaning and user maintenance shall not be made by children without supervision.

2. INTRODUCTION

Cleans carpets, car interiors, fabrics and upholstery. Constructed from high impact plastic which is dent resistant and rustproof. Supplied with carpet lance, hand held lance, full wet and dry vacuum accessory kit, including stainless steel telescopic rigid extension tube, cartridge filter and foam filter. Powerful pump forces cleaning fluid into fabric/carpet and 1250W suction power leaves surface virtually dry after one pass. Features safety shut-off for wet operation. Large capacity drum with external detergent tank for easy filling. Fitted with two fixed wheels and two castors. Cable storage hook, accessories and extension tube holders on head, plus additional accessory storage slots on base.

3. SPECIFICATION

Model No: **PC310**
Drum Size: 20L
Drum Type: Plastic
Filter Type: PET Type Cartridge
Motor Power: 1250W
Supply: 230V

Replacement Parts: Cartridge Filter (Must be used for dry vacuuming) **PC310CF**

..... Foam Filters (Must be used for wet vacuuming) - Pack of 10 **PC200FF10**

Consumable Parts: Carpet/Upholstery Detergent 1L - (Pack of 10) **VMR921**

..... (Single) **VMR921S**

..... Carpet/Upholstery Detergent 5L - (Pack of 4) **VMR925**

..... (Single) **VMR925S**

Optional Accessories: Optional Dust Bags (Pack of 5) - **PC200PB5**

IMPORTANT! IF THE MACHINE IS USED WITHOUT A CARTRIDGE FILTER FITTED, THE MOTOR WILL BURN OUT AND YOUR GUARANTEE WILL BE INVALIDATED. ALWAYS KEEP A SPARE CARTRIDGE FILTER HANDY.

4. CONTENTS

Item	Description	17	Shampoo tank
1	Handle	18	Cartridge filter
2	Outlet cover for the exhaust filter	19	Shampoo pipe for large wash head
3	Exhaust filter	20	Large shampoo head
4	Shut-off valve basket	21	Shampoo spraying nozzle
5	Floating cup valve	22	Small shampoo head
6	Cable storage hook	23	Air flow regulator
7	Accessory storage position	24	Extension tube
8	Extension tube holder	25	Foam filter
9	Main switch	26	Combo floor brush
10	Shampoo pump outlet nozzle	27	Crevice tool
11	Vacuum hose inlet	28	Small utility nozzle
12	Castor in castor mounting with accessory storage & screws	29	Suction hose & shampoo delivery tube assembly
13	Rear wheels	30	Tube clip
14	Rear storage container	31	Sprayer trigger
15	Clasp (x2)	32	Seal ring (for replacement)
16	Rear Shampoo tank connecting tube	33	Hose connector

4.1. Undo tank clasps and lift off the top section assembly (fig.1.2&1.3).

4.2. Remove contents from inside the tank (fig.1.4). Check and identify each component as listed above.

5. ASSEMBLY

× **DO NOT** connect to the electricity supply before completing the process in section 4.1 & 4.2.

5.1. Insert a large wheel on each side of the rear basket and ensure they are pushed all the way in (fig1.5a).

5.2. Turn the tank upside down and insert the moulded castor mountings into their positions in the black base (fig.1.5b). Retain each castor moulding with the self tapping screws provided.

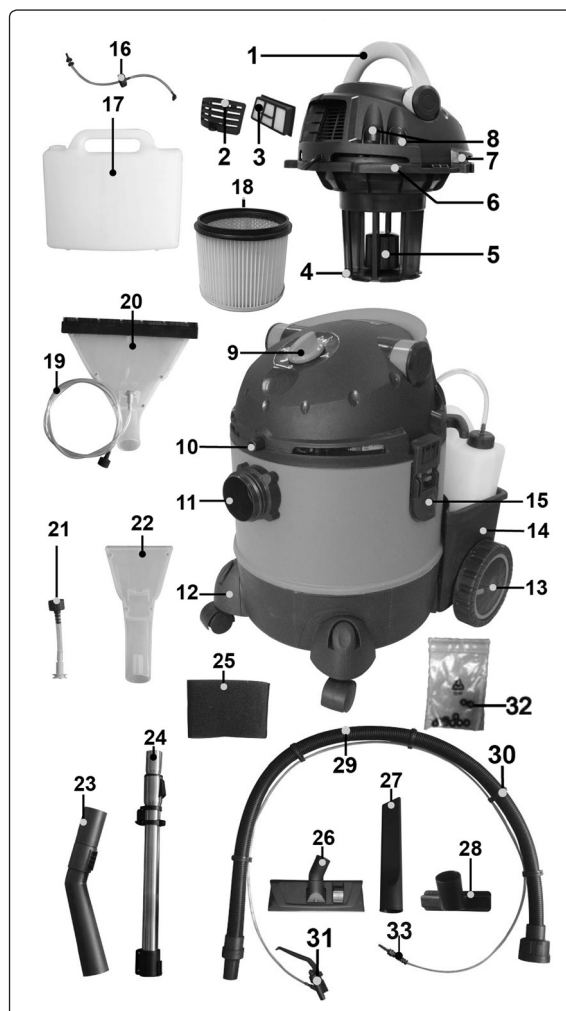
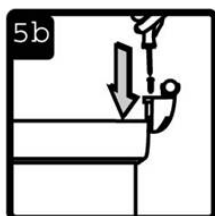
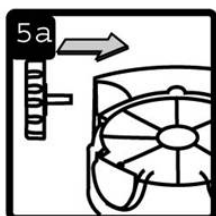
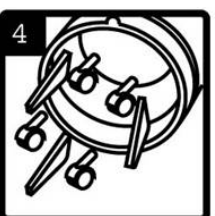
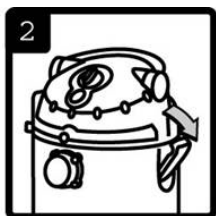
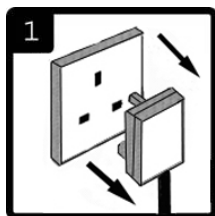


fig.1



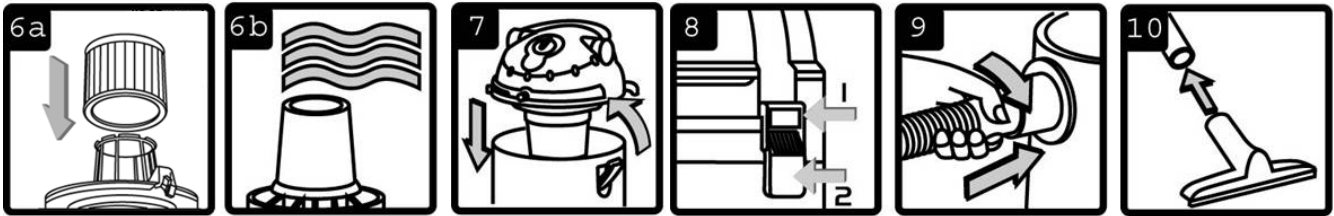


fig.2

- 5.3. For dry suction fit the cartridge filter (fig.2.6a - item 18).
- 5.4. For carpet washing or wet suction fit the foam filter (fig.2.6b - item 25).
- 5.5. Re-assemble the top to the tank (fig.2.7).
- 5.6. Fasten the 2 clasps (fig.2.8).
- 5.7. Attach the suction hose to the suction inlet on the front of the tank (fig.2.9).
- 5.8. Push the end of the suction hose into the air diffuser handle. Push the end of the air diffuser handle into the telescopic extension tube. Fit the required accessory to the base of the extension tube or directly to the diffuser handle if the extension tube is not required (fig.2.10).

6. CARTRIDGE FILTER

- **WARNING!** Always disconnect the plug from the mains supply before removing the tank cover.
- IMPORTANT:** The filter is made of high quality paper designed to filter small particles of dust, therefore this filter must be used to dry vacuum only.
- 6.1. The filter must be completely dry when used to collect dry dust only.
- 6.2. Check the filter carefully and regularly for tears or small holes. Even a small hole can cause dust to be exhausted. Never use a filter with holes or tears as this may cause damage to the motor and invalidate warranty. Replace it immediately.
- 6.3. **INSTALLING & CLEANING**
- 6.3.1. Slide cartridge filter down over filter cage.
- 6.3.2. Hold the base rim of the filter and gently push and twist it until the top rim fits snug against the lid assembly. Ensure there is no gap between filter and lid assembly.
- 6.3.3. To remove filter for cleaning, hold the base of the filter and pull gently off the cage.
- 6.3.4. Clean dry filter by tapping it on the inside of a bin.

7. DRY VACUUM CLEANING

- **WARNING!** Ensure you read, understand and apply Section 1 'Safety Instructions'.
- × **DO NOT** vacuum hazardous substances. Use of an incorrect cartridge filter will invalidate your warranty.
- **WARNING!** Ensure the machine is unplugged from the power supply.
- 7.1. Fit the cartridge filter down over the basket and push it home fully (fig.3.2).
- 7.2. Re-position the head onto the tank, and clip in place (fig.3.3).
- 7.3. Insert the larger end of the flexible hose into the front inlet on the tank and lock in place.
- 7.4. Push the required attachment onto the free end of the hose.
- 7.5. Plug into the power supply.
- 7.6. Switch the motor to vacuum only position . When completed, turn the switch to the off position and unplug from power supply.

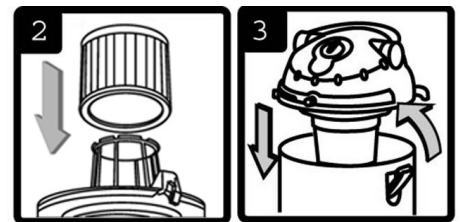
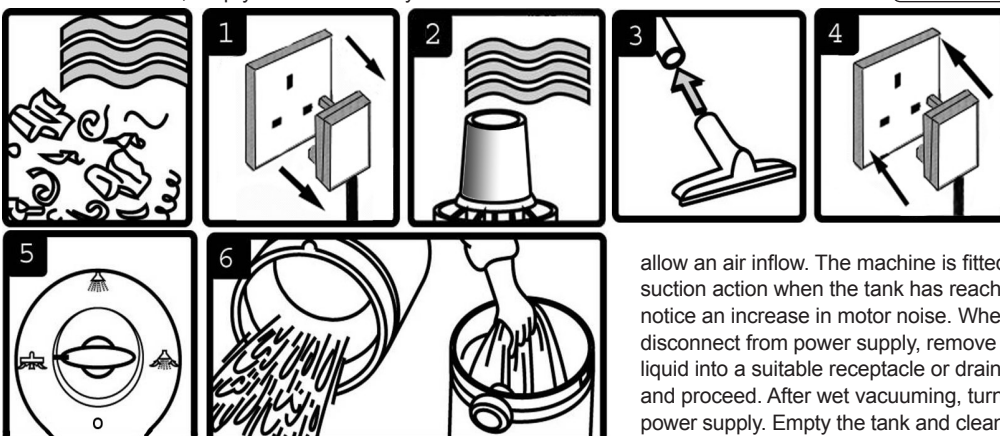


fig.3

8. WET VACUUM CLEANING

- **WARNING!** Ensure you read, understand and apply Section 1 'Safety Instructions'.
- IMPORTANT:** Remove plug from power supply before opening unit.
- × **DO NOT** vacuum solvents, explosives, flammable and/or hazardous liquids such as petrol, oil, spirits, paint, thinners, acids etc. Use of an incorrect filter will invalidate your warranty.
- **WARNING!** Ensure the machine is unplugged from the power supply.
- 8.1. Make sure the tank is clean and free from dust and dirt.
- 8.2. For wet vacuum cleaning the foam filter must be used (fig.4.2). When using the foam filter first remove any cartridge filter fitted.
- 8.3. Ensure the foam filter is clean and dry. Gently place the foam filter over the filter cage and adjust carefully.
- 8.4. Fit the required accessories or tubes to the suction hose (fig.4.3).
- 8.5. Ensure the switch is off position before plugging into the power supply.
- 8.6. Switch to position to use. When completed, turn the switch to the off position and unplug from power supply.
- 8.7. After use, empty the tank and dry.

fig.4



WARNING! The tank is not designed for liquid storage. Always empty liquids after use. Never store the cleaner with liquid in the tank.

To vacuum large quantities of liquid, from a sink or tank etc., **DO NOT** immerse the nozzle completely in the liquid; leave a gap at the top of the nozzle opening to

allow an air inflow. The machine is fitted with a float valve which blocks the suction action when the tank has reached its maximum capacity. The user will notice an increase in motor noise. When this happens, turn off the machine, disconnect from power supply, remove the head from the tank and empty the liquid into a suitable receptacle or drain. To continue to vacuum, refit the head and proceed. After wet vacuuming, turn the machine off and remove plug from power supply. Empty the tank and clean/dry the inside and outside before storage.

9. CARPET CLEANING

9.1. SET UP

NOTE: Water, mixed with a suitable carpet shampoo solution, (follow the manufacturers instructions) is pumped deep into the fibres of the carpet via the shampoo application nozzle. The dirty liquid is then sucked back into the waste tank along with the dirt and grime dislodged by the cleaning solution. Water can be pumped up to 2 meters above the machine so that stairs may also be shampooed.






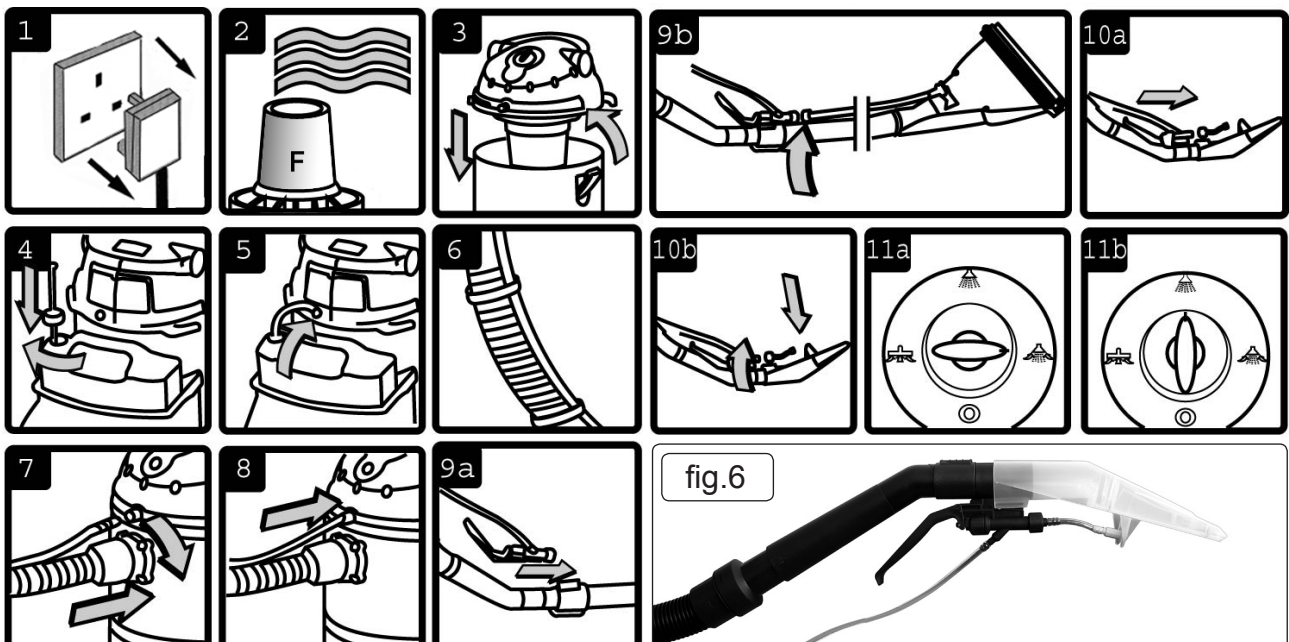
- WARNING!** Ensure you read, understand and apply Section 1 'Safety Instructions'.
- * **DO NOT** vacuum hazardous substances.
- WARNING!** Ensure the machine is unplugged from the power supply (fig.5.1).
- 9.1.1. Gently fit the foam filter F (fig.5.2)
- 9.1.2. Reposition the head onto the tank body and clip in place (fig.5.3).
- 9.1.3. Ensure that the shampoo solution has been mixed with the recommended proportion of water and pour it into the shampoo tank.
- 9.1.4. Insert the shampoo tank connecting tube and filter (Item - 16) into the tank (fig.5.4) and push the cap onto the tank filler neck to avoid any shampoo splashing out whilst working.
- 9.1.5. Plug the nozzle on the other end of the shampoo tank connecting tube into the shampoo inlet hole on the rear of the motor housing below the exhaust filter cover (fig.5.5).
- 9.1.6. Ensure the transparent shampoo delivery tube is fitted correctly around the suction hose and held in place with the clips provided (fig.5.6).
- 9.1.7. Screw the large threaded connector on the end of the flexible suction hose to the vacuum inlet on the front of the tank (fig.5.7).
- 9.1.8. Push the connector on the end of the shampoo delivery tube into the shampoo outlet nozzle on the front of the motor housing (fig.5.8).
- 9.1.9. Slide the spraying trigger fitting into the mount at the top of the extension tube. Push gently and ensure it clicks into place (fig.5.9a).
- 9.1.10. Fit the large washing head to the extension tube (fig.5.9b).
- 9.1.11. Connect the shampoo delivery tube from the head to the trigger (fig.5.10a). The black fitting is a push and twist fit.
- 9.1.12. The spraying nozzle at the other end of the delivery tube is a push fit into the mounting on the underside of the head. There is a notch in the nozzle which must fit onto a spigot in the head mounting to ensure that the nozzle outlet is the right way round (fig.5.10b).
- 9.2. TO CLEAN FABRICS AND UPHOLSTERY See fig.6.**
- 9.2.1. Clip the spray nozzle with the short tube (Item 21) into the underside of the small cleaning head (Item 22). Then attach the trigger directly to the mounting on the underside of the small head. Push the assembled head onto the air diffuser handle.
 - NOTE:** The metal extension tube is not used.
- 9.2.2. Select the switch to position  to operate the pump for shampoo application only (fig.5.11a).
- 9.2.3. Select the switch to position  for simultaneous shampoo application and dirty liquid suction (fig.5.11a).
- 9.2.4. Squeeze the trigger to apply shampoo to the area to be washed.
- 9.2.5. Vacuum the carpet thoroughly before cleaning/shampooing it.
- 9.2.6. For best results we recommend you first remove all furniture from the room to be cleaned, or move it away from the cleaning area.
- 9.2.7. Clean the whole carpet systematically in squares of approx. 1.5m each, avoiding walking over the cleaned carpet until it completely dry.
- 9.2.8. Start furthest away from the doorway to the room, extend the hose and work backwards.
- 9.2.9. Switch to position  and squeeze the trigger to spray shampoo into the area to be cleaned.
- 9.2.10. Squeeze the trigger as you pull the head back towards you, in lengths of approx 1.5m. Refill the tank if the fluid spray stops.
- 9.2.11. Switch off position  and return to where you started.
- 9.2.12. Switch to position  to vacuum the dirty solution and repeat the previous pattern of strokes. Apply more shampoo in any particularly dirty area. The dirty solution is visible as it is sucked up through the transparent head. Stop vacuuming when there is no more dirty fluid visible.
 - * **DO NOT** walk over any newly cleaned area until it is completely dry.
- 9.2.13. The small washing head is ideal for cleaning sofas, chairs, stairs and car interiors.
 - * **DO NOT** replace furniture until the carpet is completely dry!
 - * **DO NOT** run the pump when there is no shampoo in the tank!
 - WARNING!** The motor noise changes to a higher pitch when the tank is full or blocked. Stop the machine immediately, unplug from the power supply and empty the water tank.
 - WARNING!** Always use a low foam shampoo or use a de-foaming agent.

fig.5



9.3. STORAGE

NOTE: Prior to storage, the following steps should be taken:

- 9.3.1. Remove the shampoo head and use the end of the extension tube to suck up any remaining liquid. Run the vacuum cleaner until the tubes and hose are clean and dry.
- 9.3.2. Switch off the unit and unplug from the power supply. Then empty the main tank and shampoo tank.
- 9.3.3. Gently remove the foam filter to dry. Refit for further wet suction. For dry vacuuming you must fit a dry cartridge filter.

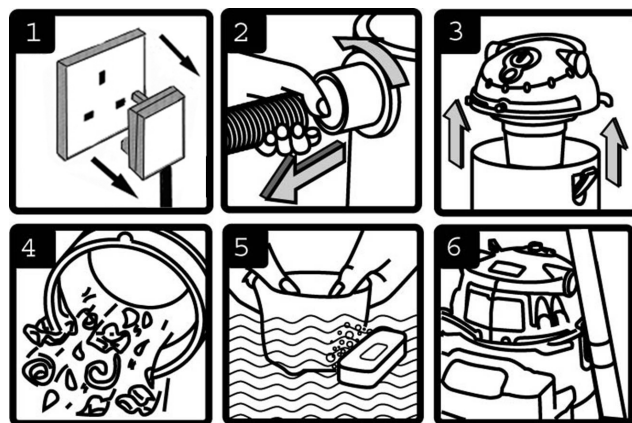


fig.7

10. MAINTENANCE

10.1. GENERAL MAINTENANCE

- **WARNING!** Ensure the machine is unplugged from the power supply.
- 10.1.1. Disconnect the hose from the container (fig.7.2).
- 10.1.2. Undo the clasps and remove motor head from the container (fig.7.3).
- 10.1.3. Clear out any dirt or debris from the container and hose (fig.7.4).
- 10.1.4. Clean the foam filter by washing it in a mild soapy solution (fig.7.5).
- 10.1.5. Check that the telescopic suction tube operates smoothly, and check the power cable to make sure it has not received any damage.
- 10.1.6. Check the O Ring (fig.8) on the mail hose connector (Item 33) for wear.
- 10.1.7. Replace O rings if necessary (Item 32).

10.2. CARTRIDGE FILTER MAINTENANCE See also Section 6

- 10.2.1. Handle the filter carefully when cleaning or installing.
- 10.2.2. Carefully remove the cartridge filter (fig.9A) and inspect it for damage. A filter that has small holes or tears in it will not perform efficiently and should be replaced.
- 10.2.3. To clean a dry filter, tap it inside a waste bin (fig.9B).
- * **DO NOT** use a wet cartridge filter for dry vacuuming as the filter will clog quickly. To clean a wet cartridge filter it should be rinsed from the inside (fig.9C) and allowed to air dry for 24 hours.
- 10.3. To fit a new/cleaned filter, slide it over the filter basket (fig.9C) and push it home fully (fig.9D).
- 10.4. Check and clean, if necessary, the exhaust filter (Item 3), found at the rear of the motor head, before each use. Open the exhaust outlet cover (Item 2) and remove the exhaust filter, clean with a brush or blow with air, replace before switching machine on.

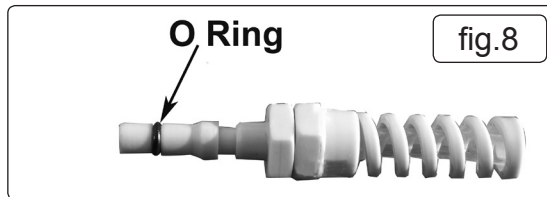


fig.8

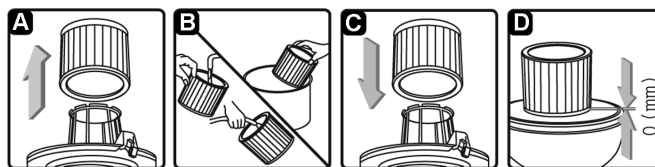


fig.9

11. TROUBLESHOOTING

Problem	Reason	Solution
Cleaner will not operate.	No power supply. Faulty power cable, switch or motor. Container full of liquid.	Check supply. Check and repair or replace faulty item. Empty container.
Dust comes from the motor cover.	Filter missing or damaged.	Fit or replace appropriate filter.
Reduced efficiency and increased Motor speed/vibration.	Filter clogged. Nozzle, hose or container inlet blocked.	Clean or replace appropriate filter. Check nozzle, hose and container inlet for blockage.
No solution spraying out.	Switch in wrong position. Shampoo tank is empty. Incorrectly fitted trigger or pipes.	Turn switch to the required position. Add more shampoo. Check fittings and connections. Ensure there are no kinks in tubes.
Leak from drum connector.	O ring on male connector damaged.	Replace O ring.



ENVIRONMENT PROTECTION

Recycle unwanted materials instead of disposing of them as waste. All tools, accessories and packaging should be sorted, taken to a recycling centre and disposed of in a manner which is compatible with the environment. When the product becomes completely unserviceable and requires disposal, drain any fluids (if applicable) into approved containers and dispose of the product and fluids according to local regulations.



WEEE REGULATIONS

Dispose of this product at the end of its working life in compliance with the EU Directive on Waste Electrical and Electronic Equipment (WEEE). When the product is no longer required, it must be disposed of in an environmentally protective way. Contact your local solid waste authority for recycling information.

Note: It is our policy to continually improve products and as such we reserve the right to alter data, specifications and component parts without prior notice.

Important: No Liability is accepted for incorrect use of this product.

Warranty: Guarantee is 12 months from purchase date, proof of which is required for any claim.

Sealey Group, Kempson Way, Suffolk Business Park, Bury St Edmunds, Suffolk. IP32 7AR

01284 757500

01284 703534

sales@sealey.co.uk

www.sealey.co.uk