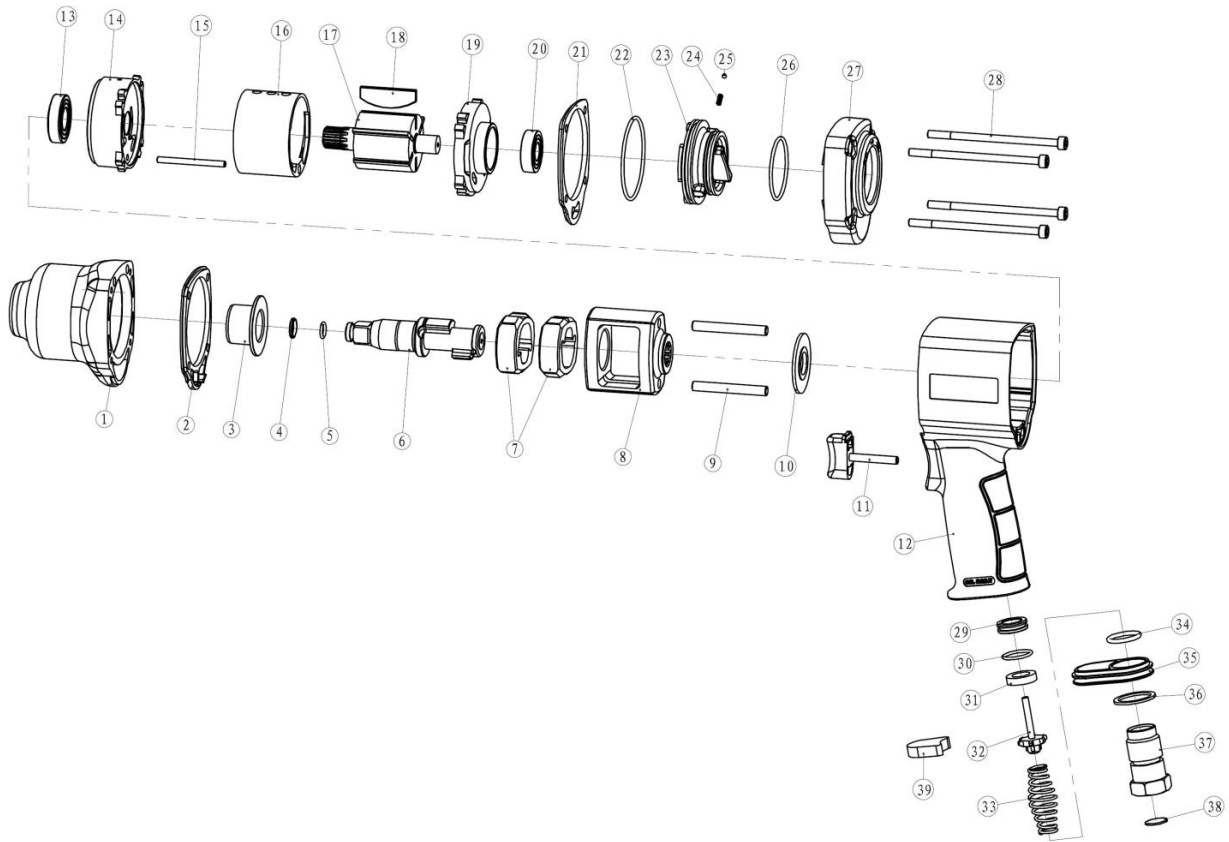


Parts Information:  
**Composite Air Impact Wrench 1/2" Sq Drive  
 Twin Hammer**  
**Model No: GSA6002.V2**



Item	Part No.	Description
1	GSA6002.V2-01	HAMMER CASE & ANVIL BUSHING
2	GSA6002.V2-02	RUBBER GASKET
3	GSA6002.V2-03	ANVIL BUSHING
4	GSA6002.V2-04	CIRCLIP
5	GSA6002.V2-05	O-RING
6	GSA6002.V2-06	ANVIL
7	GSA6002.V2-07	HAMMER
8	GSA6002.V2-08	HAMMER CAGE
9	GSA6002.V2-09	HAMMER PIN
10	GSA6002.V2-10	GASKET
11	GSA6002.V2-11	TRIGGER
12	GSA6002.V2-11A	HANDLE ASSY
13	GSA6002.V2-13	BEARING
14	GSA6002.V2-14	FRONT END PLATE
15	GSA6002.V2-15	PIN
16	GSA6002.V2-16	CYLINDER
17	GSA6002.V2-17A	ROTOR ASS'Y
18	GSA6002.V2-18	ROTOR VANE
19	GSA6002.V2-19	REAR END PLATE
20	GSA6002.V2-20	BEARING

Item	Part No.	Description
21	GSA6002.V2-21	RUBBER GASKET
22	GSA6002.V2-22	O-RING
23	GSA6002.V2-23	TIMING BUTTON
24	GSA6002.V2-24	SPRING
25	GSA6002.V2-25	STEEL BALL
26	GSA6002.V2-26	O-RING
27	GSA6002.V2-27	REAR COVER
28	GSA6002.V2-28	FASTENING SCREW
29	GSA6002.V2-29	INLET GASKET
30	GSA6002.V2-30	O-RING
31	GSA6002.V2-31	RUBBER SEAL
32	GSA6002.V2-32	INLET VALVE
33	GSA6002.V2-33	INLET SPRING
34	GSA6002.V2-34	O-RING
35	GSA6002.V2-35	PLASTIC COVER
36	GSA6002.V2-36	GASKET
37	GSA6002.V2-37	AIR INLET
38	GSA6002.V2-38	AIR INLET SCREEN
39	GSA6002.V2-39	MUFFLER

**NOTE:** It is our policy to continually improve products and as such we reserve the right to alter data, specifications and component parts without prior notice.

**IMPORTANT:** No liability is accepted for incorrect use of product.

**WARRANTY:** Guarantee is 12 months from purchase date, proof of which will be required for any claim.