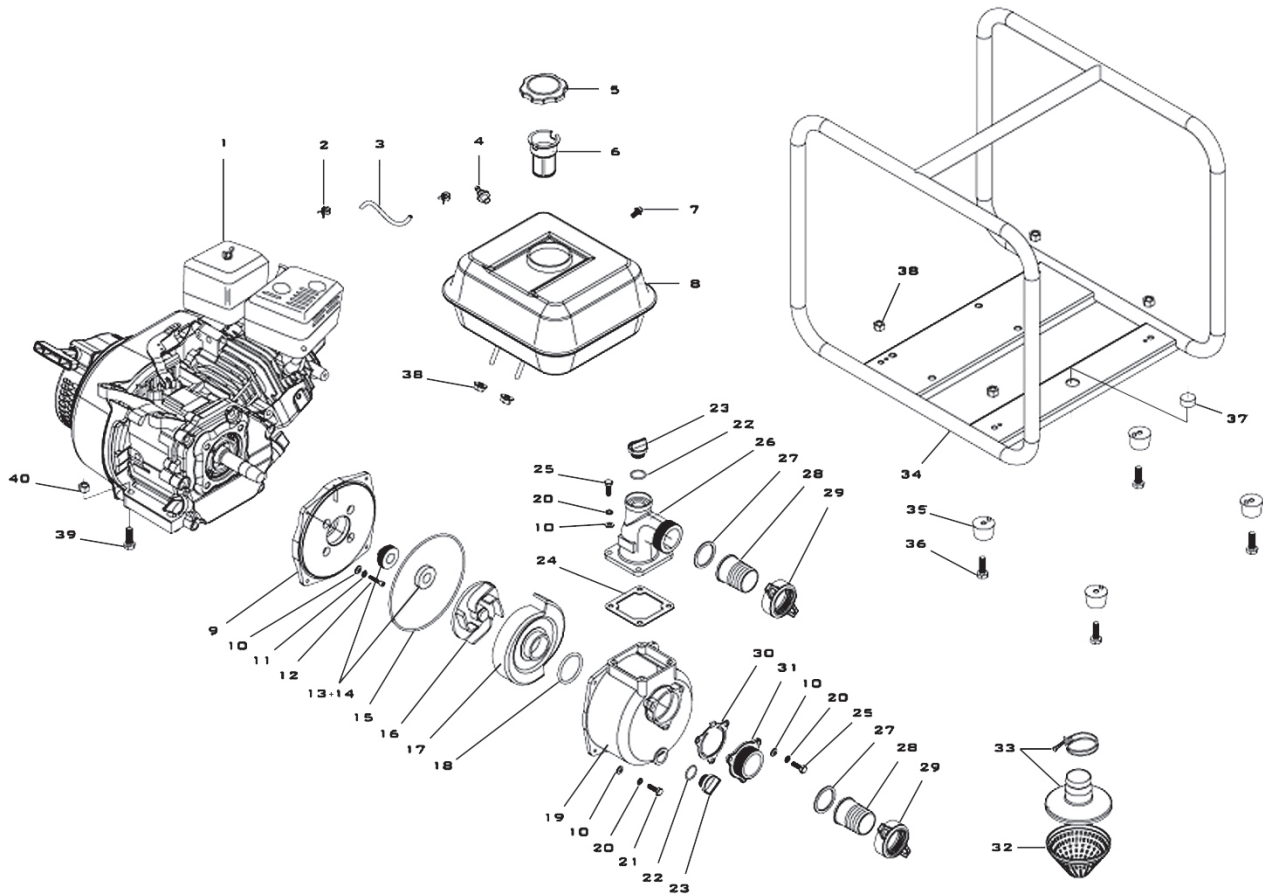


Parts Information: Water Pump Ø50mm 5.5hp Petrol Engine Model No: EWP050



Item	Part No.	Description
1	EWP050.01	ENGINE
2	EWP050.02	PIPE CLAMP
3	EWP050.03	FUEL PIPE
4	EWP050.04	CONNECTOR
5	EWP050.05	FUEL TANK CAP
6	EWP050.06	FILTER CUP
7	SFS625.S	HEX HEAD FLANGE BOLT M6x25 SINGLE
8	EWP050.08	FUEL TANK
9	EWP050.09	PUMP COVER
10	FWM8.S	FLAT WASHER M8 SINGLE
11	EWP050.11	RUBBER WASHER
12	SCB860.SB	SOCKET HEAD CAP SCREW M8x60 BLACK
13+14	EWP050.13+14	MECHANICAL SEALS
15	EWP050.15	O-RING
16	EWP050.16	WATER PUMP IMPELLER
17	EWP050.17	VOLUTE CASING
18	EWP050.18	RUBBER BUSHING
19	EWP050.19	PUMP HOUSING
--	EWP050.19A	PUMP HOUSING ASS'Y (not shown)
20	SWM8.S	SPRING WASHER M8 ZINC (SINGLE)
21	SS830.S	HEX HEAD SET SCREW M8x30mm SINGLE
22	EWP050.22	O-RING

Item	Part No.	Description
23	EWP050.23	PLUG PACKING
24	EWP050.24	SQUARE RUBBER GASKET
25	EWP050.25	BOLT M8x25
26	EWP050.26	OUTLET FLANGE
27	EWP050.27	RUBBER WASHER
28	EWP050.28	PIPE JOINT
29	EWP050.29	JOINT GRIP
30	EWP050.30	CHECK VALVE
31	EWP050.31	INLET FLANGE
32	EWP050.32	FILTER NET
33	EWP050.33	REAR HOUSING
--	EWP050.33A	REAR HOUSING CLAMP (not shown)
34	EWP050.34	FRAME
35	EWP050.35	SHOCK ABSORBER
36	MSC614.S	CSK PHILLIPS MACHINE SCREW M6x14 (SINGLE)
37	EWP050.37	SHOCK ABSORBER
38	FN6.S	FLANGE NUT SERRATED M6 ZINC (SINGLE)
39	SFS835.S	HEX HEAD FLANGE BOLT M8x35 SINGLE
40	FN8.S	FLANGE NUT SERRATED M8 ZINC (SINGLE)
41	EWP050.41	FLANGE BOLT M8x35
42	FN8.S	FLANGE NUT SERRATED M8 ZINC (SINGLE)

NOTE: It is our policy to continually improve products and as such we reserve the right to alter data, specifications and component parts without prior notice.

IMPORTANT: No liability is accepted for incorrect use of product.

WARRANTY: Guarantee is 12 months from purchase date, proof of which will be required for any claim.

Sealey Group, Kempson Way, Suffolk Business Park, Bury St Edmunds, Suffolk. IP32 7AR



01284 757500



01284 703534

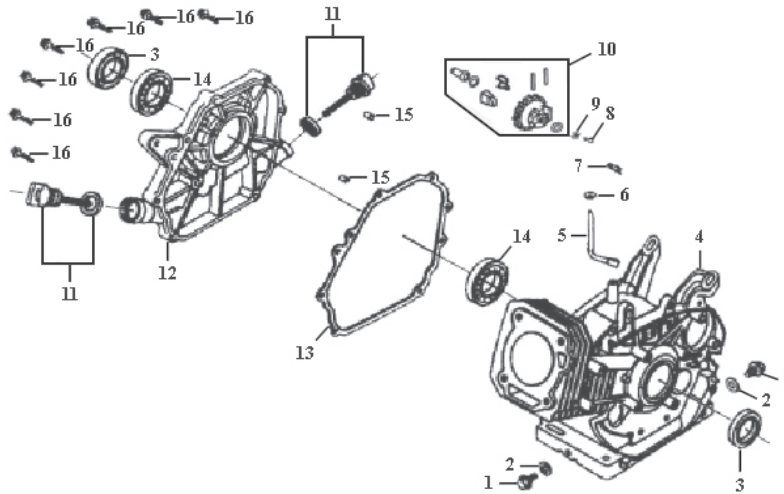


sales@sealey.co.uk



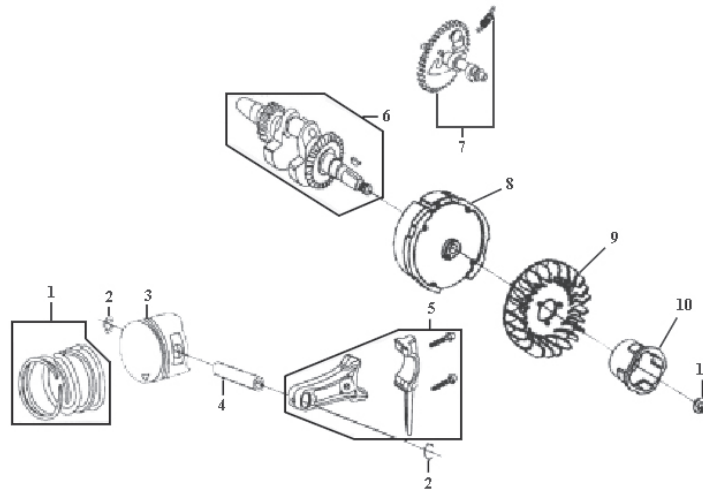
www.sealey.co.uk

Parts Information: Water Pump Ø50mm 5.5hp Petrol Engine Model No: EWP050



Item	Part No.	Description
1	EWP050.CC1	DRAIN PLUG
2	EWP050.CC2	COPPER SEAL
3	EWP050.CC3	OIL SEAL, CRANKSHAFT
4	EWP050.CC4	CRANKCASE
5	EWP050.CC5	REGULATING SWAY BAR
6	SWM6.SB	SPRING WASHER M6 BLACK(SINGLE)
7	EWP050.CC7	SPLIT PIN
8	EWP050.CC8	REGULATING SHAFT

Item	Part No.	Description
9	EWP050.CC9	SNAP RING
10	EWP050.CC10	DRIVEN GEAR ASS'Y
11	EWP050.CC11	DIPSTICK WITH SEAL
12	EWP050.CC12	CRANKCASE COVER
13	EWP050.CC13	GASKET, CRANKCASE
14	B/6205	BEARING 6205
15	EWP050.CC15	SET PIN
16	SFS834.S	HEX HEAD FLANGE BOLT M8x34 SINGLE



Item	Part No.	Description
1	EWP050.CS1	PISTON RING SET
2	EWP050.CS2	PISTON PIN CIRCLIP
3	EWP050.CS3	PISTON
4	EWP050.CS4	PISTON PIN
5	EWP050.CS5	CONNECT ROD ASS'Y
6	EWP050.CS6	CRANKSHAFT ASS'Y

Item	Part No.	Description
7	EWP050.CS7	CAMSHAFT ASS'Y
8	EWP050.CS8	FLYWHEEL
9	EWP050.CS9	FLYWHEEL FAN
10	EWP050.CS10	STARTING FLANGE
11	SN14.S	STEEL NUT M14 ZINC DIN934(SINGLE)

NOTE: It is our policy to continually improve products and as such we reserve the right to alter data, specifications and component parts without prior notice.

IMPORTANT: No liability is accepted for incorrect use of product.

WARRANTY: Guarantee is 12 months from purchase date, proof of which will be required for any claim.

Sealey Group, Kempson Way, Suffolk Business Park, Bury St Edmunds, Suffolk. IP32 7AR



01284 757500



01284 703534

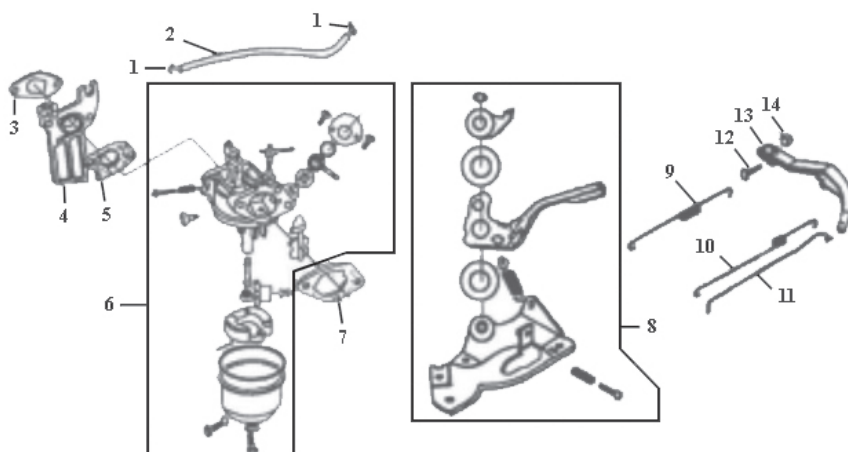


sales@sealey.co.uk



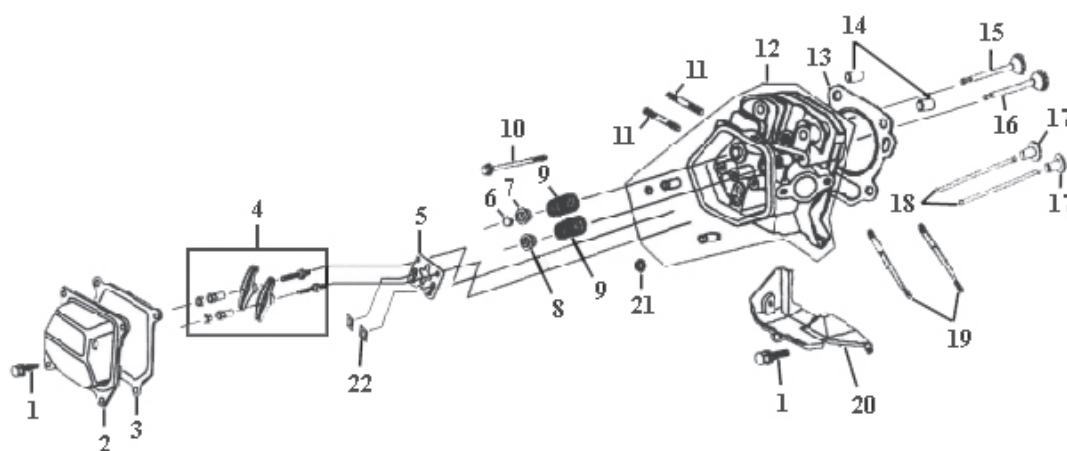
www.sealey.co.uk

Parts Information: Water Pump Ø50mm 5.5hp Petrol Engine Model No: EWP050



Item	Part No.	Description
1	EWP050.FS1	PIPE CLAMP
2	EWP050.FS2	FUEL PIPE
3	EWP050.FS3	INLET GASKET
4	EWP050.FS4	CONNECTING BLOCK
5	EWP050.FS5	CARBURETTOR GASKET
6	EWP050.FS6	CARBURETTOR ASS'Y
7	EWP050.FS7	GASKET, AIR CLEANER

Item	Part No.	Description
8	EWP050.FS8	REGULATING CONTROL ASS'Y
9	EWP050.FS9	BACK SPRING
10	EWP050.FS10	REGULATING SPRING
11	EWP050.FS11	PULLING ROD
12	EWP050.FS12	LOCK BOLT
13	EWP050.FS13	REGULATING ARM
14	FN6.S	FLANGE NUT SERRATED M6 ZINC (SINGLE)



Item	Part No.	Description
1	SFS612.S	HEX HEAD FLANGE BOLT M6x12 SINGLE
2	EWP050.CH2	CYLINDER HEAD COVER
3	EWP050.CH3	GASKET, CYLINDER HEAD COVER
4	EWP050.CH4	VALVE ROCKET ASS'Y
5	EWP050.CH5	PUSH GUIDE
6	EWP050.CH6	CAP
7	EWP050.CH7	EXHAUST SPRING SEAT
8	EWP050.CH8	INTAKE SPRING SEAT
9	EWP050.CH9	VALVE SPRING
10	EWP050.CH10	BOLT M8X60
11	EWP050.CH11	STUD M8x34

Item	Part No.	Description
12	EWP050.CH12	CYLINDER HEAD ASS'Y
13	EWP050.CH13	CYLINDER HEAD GASKET
14	EWP050.CH14	SET PIN
15	EWP050.CH15	EXHAUST VALVE
16	EWP050.CH16	INTAKE VALVE
17	EWP050.CH17	TAPPET
18	EWP050.CH18	PUSHER
19	EWP050.CH19	STUD M6x105
20	EWP050.CH20	LEAD WIND COVER
21	EWP050.CH21	OIL SEAL, PIPE
22	EWP050.CH22	NYLON, LINING

NOTE: It is our policy to continually improve products and as such we reserve the right to alter data, specifications and component parts without prior notice.

IMPORTANT: No liability is accepted for incorrect use of product.

WARRANTY: Guarantee is 12 months from purchase date, proof of which will be required for any claim.

Sealey Group, Kempson Way, Suffolk Business Park, Bury St Edmunds, Suffolk. IP32 7AR



01284 757500



01284 703534

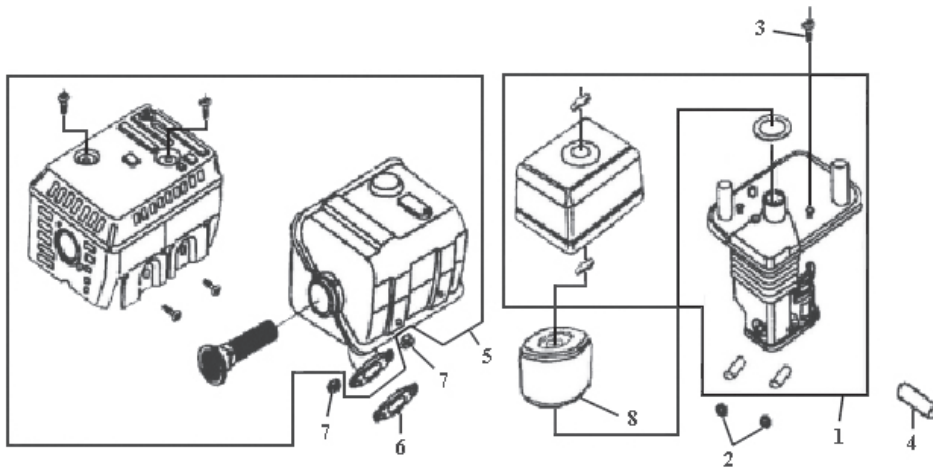


sales@sealey.co.uk



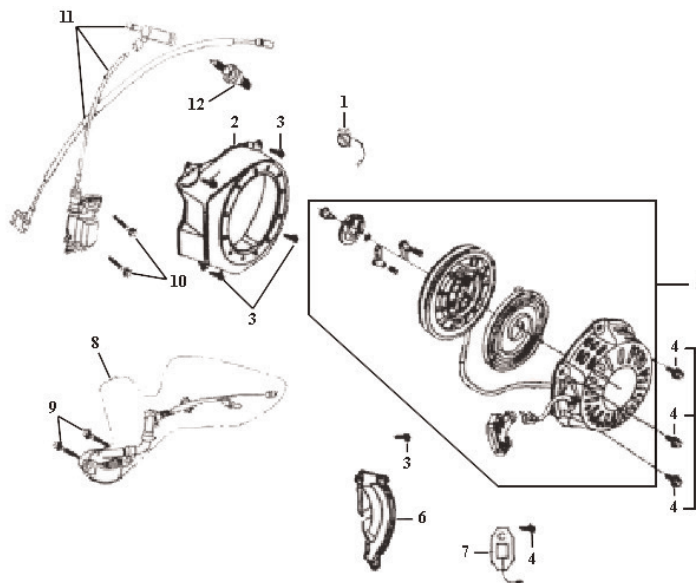
www.sealey.co.uk

Parts Information: Water Pump Ø50mm 5.5hp Petrol Engine Model No: EWP050



Item	Part No.	Description
1	EWP050.AC1	AIR CLEANER ASS'Y
2	FN6.S	FLANGE NUT SERRATED M6 ZINC (SINGLE)
3	EWP050.AC3	BOLT M6X22
4	EWP050.AC4	AIR DUCT

Item	Part No.	Description
5	EWP050.AC5	EXHAUST MUFFLER ASS'Y
6	EWP050.AC6	EXHAUST GASKET
7	FN8.S	FLANGE NUT SERRATED M8 ZINC (SINGLE)
8	EWP050.AC8	AIR FILTER



Item	Part No.	Description
1	EWP050.RS1	ENGINE SWITCH
2	EWP050.RS2	FAN HOOD
3	SFS612.S	HEX HEAD FLANGE BOLT M6x12 SINGLE
4	SFS68.S	HEX HEAD FLANGE BOLT M6x8 SINGLE
5	EWP050.RS5	RECOIL STARTER ASS'Y
6	EWP050.RS6	SHROAD COMP.

Item	Part No.	Description
7	GG2800.RS7	DIODE
8	EWP050.RS8	OIL SENSOR
9	SFS614.S	HEX HEAD FLANGE BOLT M6x14 SINGLE
10	SFS622.S	HEX HEAD FLANGE BOLT M6x22 SINGLE
11	EWP050.RS11	IGNITION COIL ASS'Y
12	EWP050.RS12	SPARK PLUG

NOTE: It is our policy to continually improve products and as such we reserve the right to alter data, specifications and component parts without prior notice.

IMPORTANT: No liability is accepted for incorrect use of product.

WARRANTY: Guarantee is 12 months from purchase date, proof of which will be required for any claim.

Sealey Group, Kempson Way, Suffolk Business Park, Bury St Edmunds, Suffolk. IP32 7AR



01284 757500



01284 703534



sales@sealey.co.uk



www.sealey.co.uk