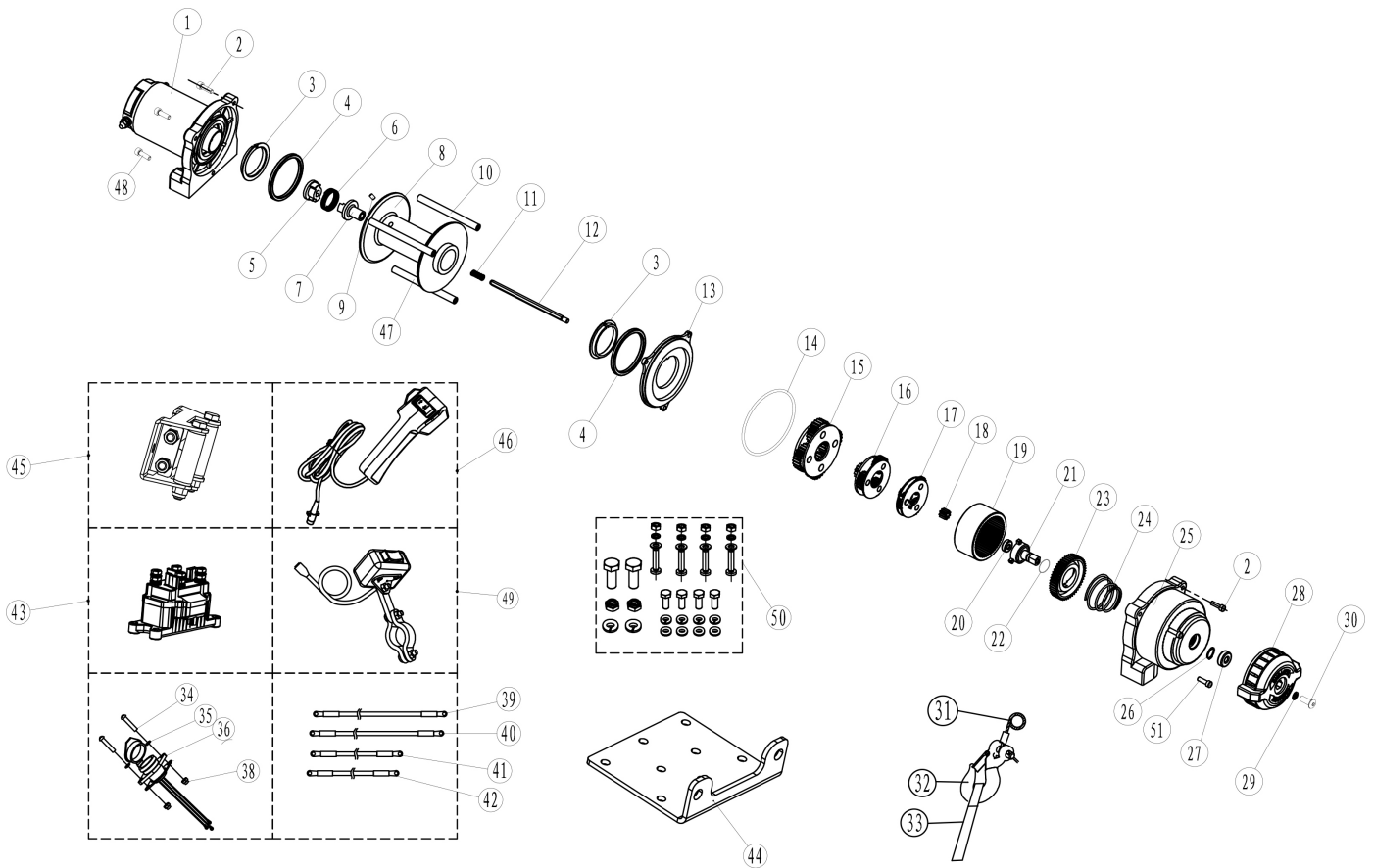




Parts Information:
ATV/Quad Recovery Winch 1135kg (2500lb)
Line Pull 12V
Model No: ATV1135.V2



NOTE: It is our policy to continually improve products and as such we reserve the right to alter data, specifications and component parts without prior notice.

IMPORTANT: No liability is accepted for incorrect use of product.

WARRANTY: Guarantee is 12 months from purchase date, proof of which will be required for any claim.

Sealey Group, Kempson Way, Suffolk Business Park, Bury St Edmunds, Suffolk. IP32 7AR



01284 757500



01284 703534



sales@sealey.co.uk



www.sealey.co.uk



Parts Information:
ATV/Quad Recovery Winch 1135kg (2500lb)
Line Pull 12V
Model No: ATV1135.V2

Item	Part No.	Description
1	ATV1135.V2-01	MOTOR ASSEMBLY
2	SCB516.S	SOCKET CAP BOLT ZINC M5x16
3	ATV1135.V2-03	DRUM BUSHING
4	ATV1135.V2-04	PACKING SEAL
5	ATV1135.V2-05	COUPLING (A)
6	ATV1135.V2-06	SPRING, COUPLING
7	ATV1135.V2-07	COUPLING (B)
8	ATV1135.V2-08	DRUM ASSEMBLY
9	ATV2040.08	COUNTERSUNK HEAD SCREW (M5x10)
10	ATV2040.V2-10	TIE BAR
11	ATV1135.V2-11	SPRING
12	ATV1135.V2-12	HEXAGON SHAFT
13	ATV1135.V2-13	CLUTCH COVER
14	ATV2040.V2-14	O-RING (100 x 1.9mm)
15	ATV1135.V2-15	GEAR CARRIER ASSEMBLY, OUTPUT
16	ATV1135.V2-16	GEAR CARRIER ASSEMBLY
17	ATV1135.V2-17	GEAR CARRIER ASSEMBLY, INPUT
18	ATV1135.V2-18	SUN GEAR, INPUT
19	ATV1135.V2-19	GEAR RING (B)
20	B/606ZZ	BEARING 606ZZ
21	ATV1135.V2-21	AXIS SUPPORT BUSHING
22	ATV2040.V2-22	O-RING (19 x 2.4mm)
23	ATV1135.V2-23	CAM CLUTCH GEAR
24	ATV1135.V2-24	CLUTCH SPRING
25	ATV1135.V2-25	GEAR HOUSING
26	ATV2040.V2-26	CIRCLIP 15mm

Item	Part No.	Description
27	ATV2040.V2-27	BEARING 6802ZZ
28	ATV1135.V2-28	FREE SPOOL HANDLE
29	SWM6.S	SPRING WASHER M6 ZINC (SINGLE)
30	SCB616.S	SOCKET CAP BOLT ZINC M6X16
31	ATV1135.WR	WIRE ROPE 4.8mm x 15.2mtr for ATV1135
32	WH.01	WINCH HOOK 1/4" (FOR ATV1135 & ATV2040)
33	ATV1135.V2-33	HANSAVER
34	SS525.S	HEX HEAD SET SCREW M5x25mm SINGLE
35	FWM5.S	FLAT WASHER M5 SINGLE
36	ATV1135.V2-36	HAND REMOTE 3-PIN CONNECTOR
--	ATV1135.V2-37	WATER-PROOF COVER (NOT SHOWN)
38	SN5.S	STEEL NUT M5 ZINC DIN934 (SINGLE)
39	ATV1135.V2-39	MOTOR WIRE SET (YELLOW)
40	ATV1135.V2-40	MOTOR WIRE SET (BLUE)
41	ATV1135.V2-41	MOTOR WIRE SET (RED)
42	ATV1135.V2-42	MOTOR WIRE SET (BLACK)
43	ATV1135.V2-43	CONTACTOR
44	ATV1135.V2-44	MOUNTING PLATE
45	ATV1135.V2-45	ROLLER FAIRLEAD
46	ATV1135.V2-46	HAND REMOTE ASSEMBLY
47	ATV1135.V2-47	HEXAGON TIE BAR
48	SCB410.S	SOCKET CAP BOLT ZINC M4x10
49	ATV1135.V2-49	ROCKER SWITCH
50	ATV1135.V2-50	HARDWARE KIT
51	SCB416.S	SOCKET CAP BOLT ZINC M4X16

NOTE: It is our policy to continually improve products and as such we reserve the right to alter data, specifications and component parts without prior notice.

IMPORTANT: No liability is accepted for incorrect use of product.

WARRANTY: Guarantee is 12 months from purchase date, proof of which will be required for any claim.

Sealey Group, Kempson Way, Suffolk Business Park, Bury St Edmunds, Suffolk. IP32 7AR



01284 757500



01284 703534



sales@sealey.co.uk



www.sealey.co.uk