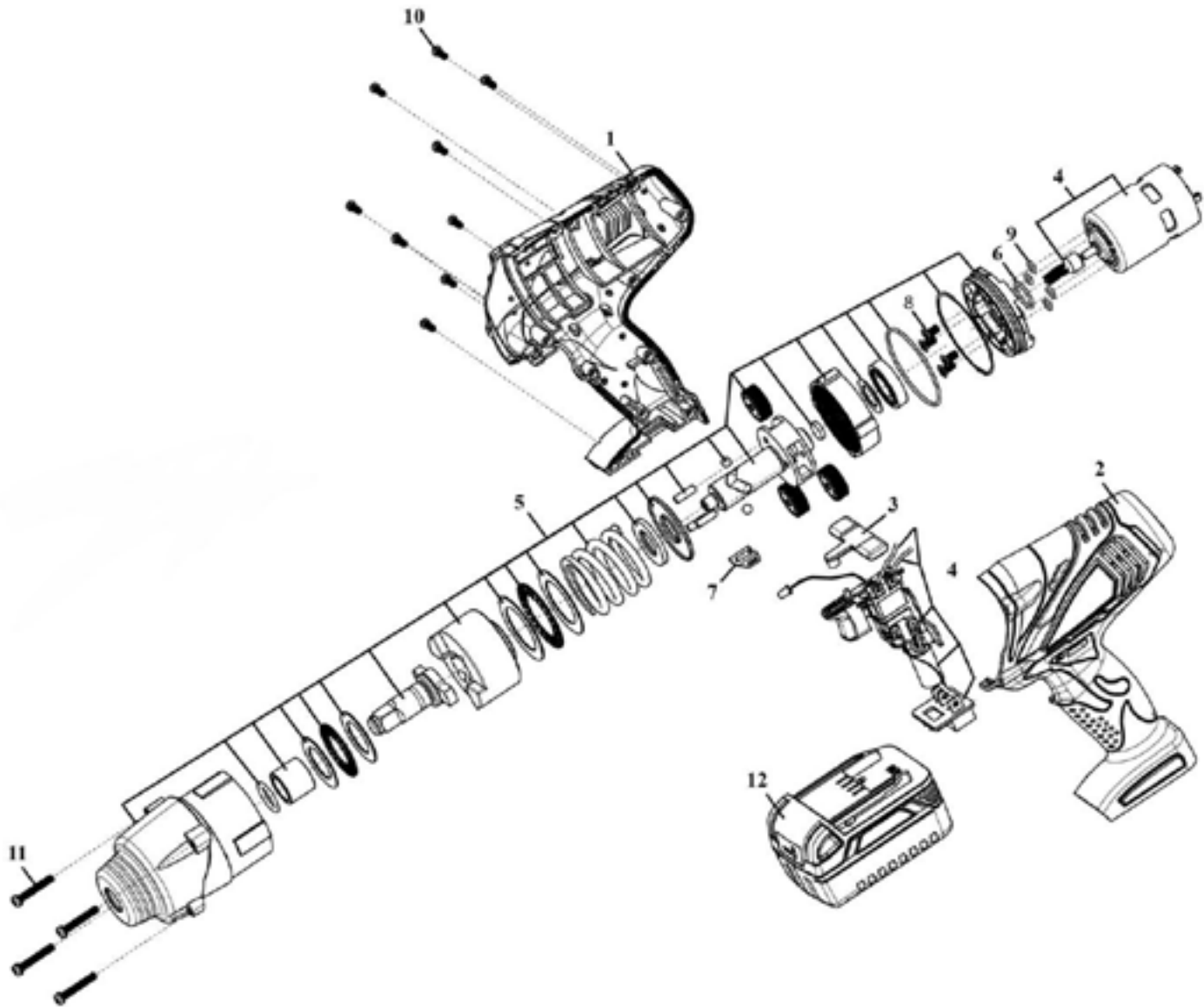




Parts Information:
**Cordless Impact Wrench 18V 4Ah
Lithium-ion 1/2" Sq Drive 650Nm - 2
Batteries Model No: CP3005.V2**



Item	Part No.	Description
1	CP3005.01	HOUSING (R)
2	CP3005.02	HOUSING (L)
3	CP3005.03	ADJUSTMENT KNOB
4	CP3005.04	MOTOR & SWITCH ASS'Y
5	CP3005.05	GEARBOX ASS'Y
6	CP3005.06	O-RING
7	CP3005.07	LED COVER
8	CP3005.08	SCREW

Item	Part No.	Description
9	CP3005.09	O-RING
10	CP3005.10	SCREW
11	CP3005.11	SCREW
12	CP3005BP4	CORDLESS POWER TOOL BATTERY LI-ION 18V/4 (NOT SHOWN)
--	CP3005.13	SCREW (NOT SHOWN)
--	CP3005.14	MOTOR ASS'Y (NOT SHOWN)
--	CP3005.C	BATTERY CHARGER (NOT SHOWN)

NOTE: It is our policy to continually improve products and as such we reserve the right to alter data, specifications and component parts without prior notice.
IMPORTANT: No liability is accepted for incorrect use of product.
WARRANTY: Guarantee is 12 months from purchase date, proof of which will be required for any claim.