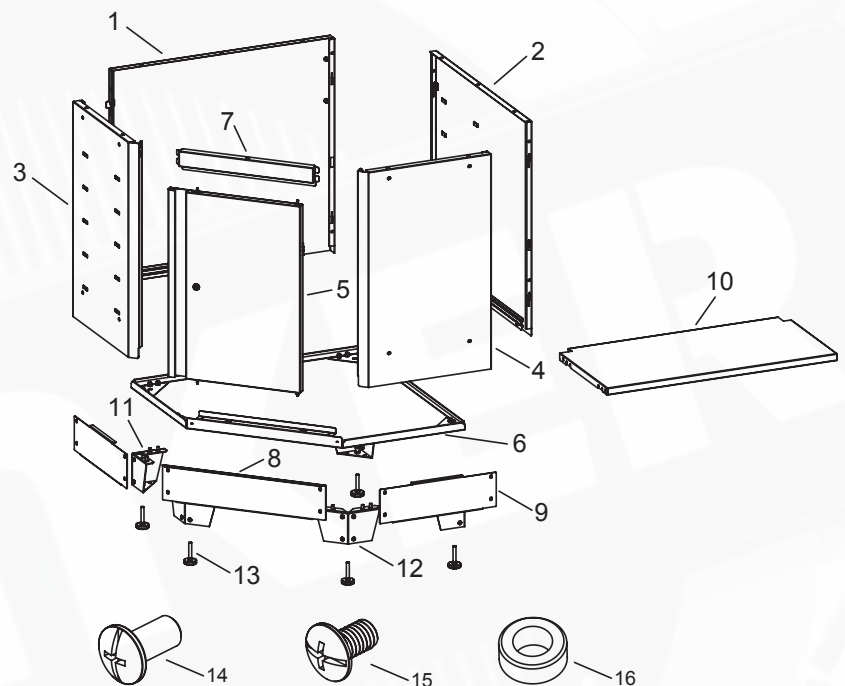


To make assembly easier we recommend having two persons aid one another in assembly.

Stock No.
33199

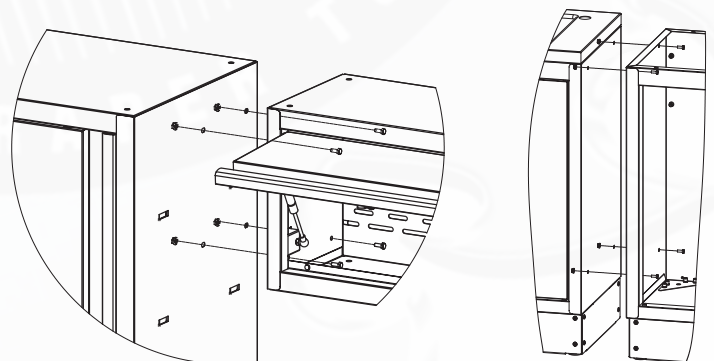
| Item | Description | Quantity |
|------|-------------------|----------|
| 1 | Left Back Panel | 1 |
| 2 | Right Back Panel | 1 |
| 3 | Left Side Panel | 1 |
| 4 | Right Side Panel | 1 |
| 5 | Door | 1 |
| 6 | Bottom Panel | 1 |
| 7 | Connecting Beam | 1 |
| 8 | Front Kick Panel | 1 |
| 9 | Side Kick Panel | 2 |
| 10 | Shelf Panel | 1 |
| 11 | Foot Holder | 3 |
| 12 | Front Foot Holder | 2 |
| 13 | Leg Leveller | 5 |
| 14 | M8 x 16mm bolt | 20 |
| 15 | M6 x 16mm bolt | 12 |

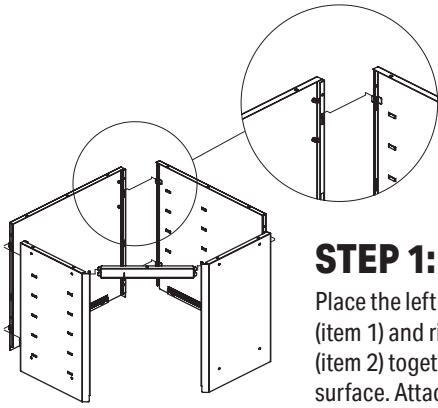


CABINET CONNECTION

Connect the side panels of two cabinets with (4) bolt M6 x 16mm and nut M6, and tighten with phillips screwdriver (not included).

Note: remove the drawers and open the doors before cabinet connection.



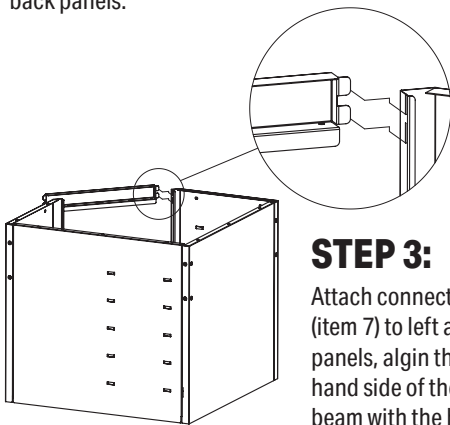
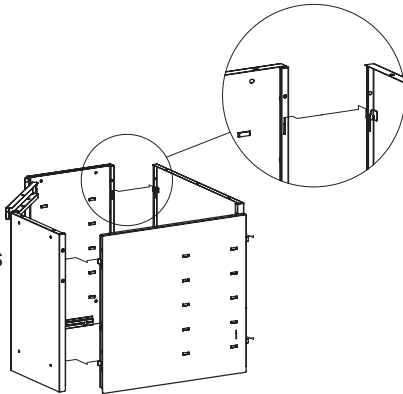


STEP 1:

Place the left back panel (item 1) and right back panel (item 2) together on a level surface. Attach right back panel to left back panel by engaging the holes on the left back panels with the corresponding hooks on right back panel.

STEP 2:

Attach left and right back panels to left and right side panels (item 3 and 4) by engaging the holes on the side panels with the corresponding hooks on the back panels.

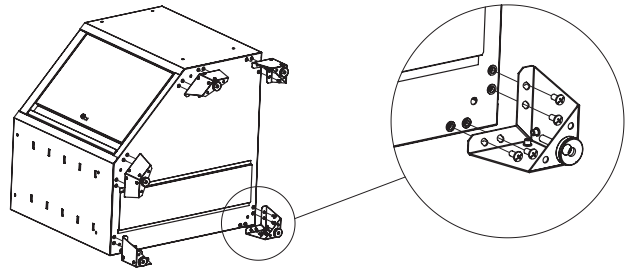
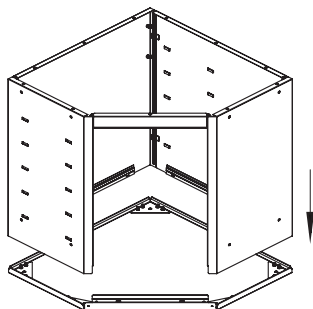


STEP 3:

Attach connecting beam (item 7) to left and right side panels, align the tabs on right hand side of the connecting beam with the holes on right side panel, slide the connecting beam together with tabs and holes fully engaged. Repeat the step above to complete another side assembly.

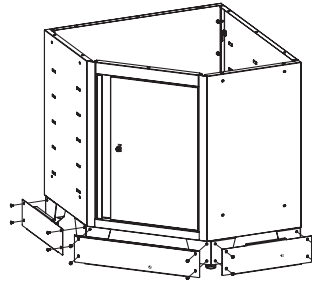
STEP 4:

Insert the bottom panel (item 6) into the side and back panels.



STEP 5:

Use packaging material to protect the unit. Attach the leg leveller (item 13) to foot holder (item 11 and 12). Insert bolt M8 x 16mm (item 14) through the foot holder into the cabinet.

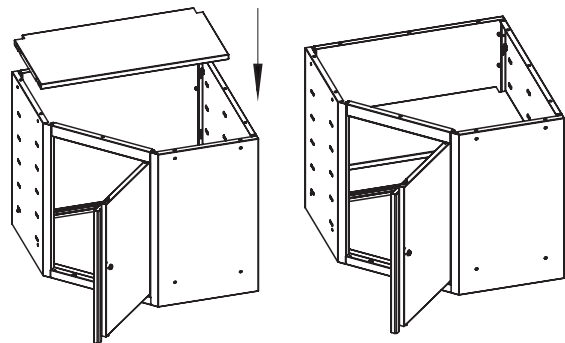


STEP 6:

Attach the front and side kick panel (item 8 and 9) to foot holder with bolt M6 x 16mm (item 15).

STEP 7:

Obliquely place the shelf panel (item 10) in the cabinet from top, secure the shelf panel at desired height by carefully inserting the shelf edges into the flanges on left side panel and right back panel. Make sure the shelf is level.



STEP 8:

Place the flat washer (item 16) into the hinge pin, align the hinge pin on the bottom of the door with the hole on bottom panel, slowly and carefully insert the hinge pin into the hole. Align the hinge pin on the top of the door with the hole on connecting beam, slowly and carefully insert the hinge pin into the hole.

