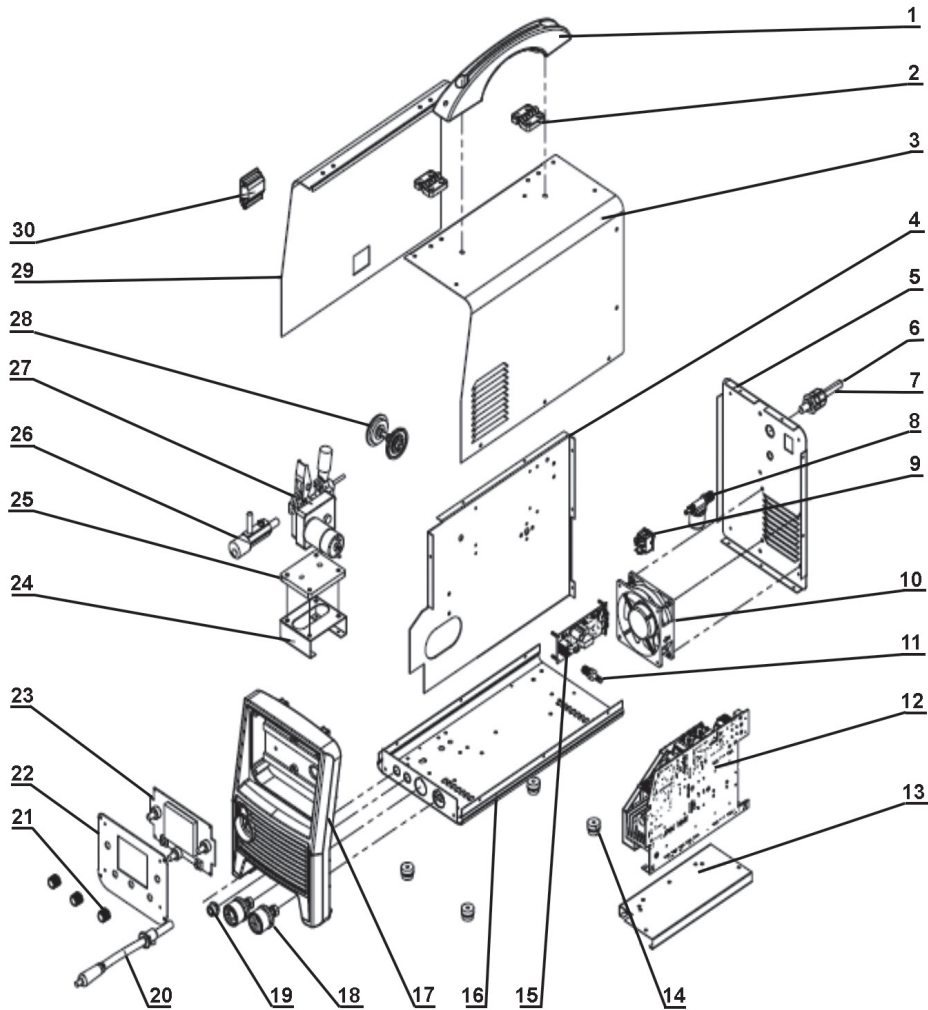


Parts Information:
**Inverter Welder MIG, TIG & MMA 200Amp
 with LCD Screen**
Model No: INVMIG200LCD



Item	Part No.	Description
1	IMIG200LCD.01	HANDLE
2	IMIG200LCD.02	HINGE
3	IMIG200LCD.03	METAL CASING
4	IMIG200LCD.04	MIDDLE PANEL
5	IMIG200LCD.05	BACK PANEL
6	IMIG200LCD.06	POWER INPUT CABLE
7	IMIG200LCD.07	BRACKET FOR POWER INPUT CABLE
8	IMIG200LCD.08	GAS VALVE
9	IMIG200LCD.09	MAIN SWITCH
10	IMIG200LCD.10	FAN
11	IMIG200LCD.11	GAS CONNECTOR
12	IMIG200LCD.12	MAIN CONTROL PCB
13	IMIG200LCD.13	BRACKET FOR MAIN CONTROL PCB
14	IMIG200LCD.14	RUBBER FOOT
15	IMIG200LCD.15	CONTROL PCB
16	IMIG200LCD.16	BOTTOM PANEL

Item	Part No.	Description
17	IMIG200LCD.17	PLASTIC FRONT PANEL
18	IMIG200LCD.18	DINSE QUICK CONNECTOR FEMALE
19	IMIG200LCD.19	TRIGGER CONNECTOR
20	IMIG200LCD.20	POLARITY CONVERSE CABLE
21	IMIG200LCD.21	POTENTIOMETER KNOB
22	IMIG200LCD.22	BRACKET FOR FRONT PCB
23	IMIG200LCD.23	LCD PANEL
24	IMIG200LCD.24	BRACKET FOR WIRE FEEDER
25	IMIG200LCD.25	INSULATION PLATE FOR WIRE FEEDER
26	IMIG200LCD.26	EUROCONNECTOR FOR MIG TORCH
27	IMIG200LCD.27	WIRE FEED MOTOR
28	IMIG200LCD.28	WIRE SPOOL HOLDER
29	IMIG200LCD.29	DOOR PANEL
30	IMIG200LCD.30	LATCH
--	M/MIG210.58	MIG TORCH 3mtr EURO CONNECTOR BINZEL TB15 (not shown)

NOTE: It is our policy to continually improve products and as such we reserve the right to alter data, specifications and component parts without prior notice.

IMPORTANT: No liability is accepted for incorrect use of product.

WARRANTY: Guarantee is 12 months from purchase date, proof of which will be required for any claim.