

**ES-1008PH / ES-1008P  
GS-1008PH / GS-1008P**

**Quick Installation Guide**

07-2012 / v1.0



## COPYRIGHT

Copyright © Edimax Technology Co., Ltd. all rights reserved. No part of this publication may be reproduced, transmitted, transcribed, stored in a retrieval system, or translated into any language or computer language, in any form or by any means, electronic, mechanical, magnetic, optical, chemical, manual or otherwise, without the prior written permission from Edimax Technology Co., Ltd.

Edimax Technology Co., Ltd. makes no representations or warranties, either expressed or implied, with respect to the contents hereof and specifically disclaims any warranties, merchantability, or fitness for any particular purpose. Edimax Technology Co., Ltd. reserves the right to revise this publication and to make changes from time to time in the contents hereof without the obligation to notify any person of such revision or changes.

The product you have purchased and the setup screen may appear slightly different from those shown in this QIG. The specification is subject to change without notice. Please visit our web site [www.edimax.com](http://www.edimax.com) for the update. All brand and product names mentioned in this manual are trademarks and/or registered trademarks of their respective holders.

### **Edimax Technology Co., Ltd.**

Add: No. 3, Wu-Chuan 3rd Rd., Wu-Ku Industrial Park, New Taipei City, Taiwan

Tel: +886-2-77396888

Email: [sales@edimax.com.tw](mailto:sales@edimax.com.tw)

## PRODUCT INTRODUCTION

### Model no.:

ES-1008PH: 8-Port Fast Ethernet Switch with 4 PoE+ Ports

ES-1008P: 8-Port Fast Ethernet PoE+ Switch

GS-1008PH: 8-Port Gigabit Ethernet Switch with 4 PoE+ Ports

GS-1008P: 8-Port Gigabit Ethernet PoE+ Switch

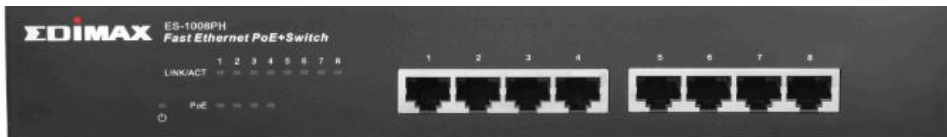
### Package Contents

Before you start using this switch, please check if there is anything missing in the package, and contact your dealer to claim the missing item(s):

- PoE switch x 1pcs
- Quick installation guide x 1pcs
- Power cord x 1pcs
- Rubber feet x 4pcs
- Rack-mount brackets and screws x 1 set

### Front Panel:

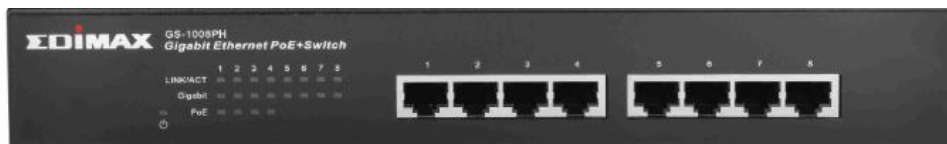
Please refer to the following description for the front panel:



ES-1008PH



ES-1008P



GS-1008PH



GS-1008P

## LED Definitions:

LED Name	Light Status	Description
PWR	On	Switch on and correctly powered
	Off	Switch not powered or not correctly powered
LINK/ACT	On	Port is connected
	Off	Port is not connected
	Flashing	Port is active and transferring/receiving data
PoE	On	PoE on and powering PoE/PoE+
	Off	PoE is not activated

## Back Panel:



## Power Connector:

Plug in the female connector of the provided power cord into this connector, and the male into a power outlet. Supported input voltages range from 100-240V AC, and 50-60 Hz.

## Product Specifications:

Model	ES-1008PH	ES-1008P	GS-1008PH	GS-1008P
Standards	IEEE 802.3 10BaseT IEEE 802.3u 100BaseTX IEEE 802.3af/802.3at PoE IEEE 802.3x Flow Control IEEE 802.3az Energy Efficient Ethernet		IEEE 802.3 10BaseT IEEE 802.3u 100BaseTX IEEE 802.3ab 1000BaseT IEEE 802.3af/802.3at PoE IEEE 802.3x Flow Control IEEE 802.3az Energy Efficient Ethernet	
Interface	RJ-45	8 ports	8 ports	8 ports
	PoE	4 ports	8 ports	8 ports
MAC Address	8K		1K	
Buffer Memory	128KB		96KB	
Jumbo Frames	9KB		N/A	
Power budget	80W	150W	80W	150W
Power Consumption	5 Watts (Max)			
Dimensions	266 x 184 x 44 x W x H)			
Weight	1.95 kg			
Operating Temperature	0 to 50°C			
Storage Temperature	-40 to 70°C			
Humidity	Operating:10 to 90% RH (non-condensing)			

## **1. PRODUCT INSTALLATION**

There are two ways to install your switch, please select one that suits you.

### **2. Desktop Installation**

1. Install the switch on a level surface that can support the weight of the unit and the relevant components, and attach the rubber feet to the bottom. The rubber feet cushion the switch and helps protect the case from scratches.
2. Plug the switch into an electrical source with the provided power cord.

### **3. Rack-Mount Installation**

Rack mounting allows for a more orderly installation when a series of network devices is being installed.

1. Disconnect all the cables from the switch.
2. Place the unit the right way up on a hard, flat surface with the front facing you.
3. Position a mounting bracket over the mounting holes on one side of the unit.
4. Insert the screws and fully tighten with a suitable screwdriver.
5. Repeat the two previous steps for the other side of the unit.
6. Insert the unit into the rack and secure with suitable screws
7. Reconnect all the cables.

Regarding the installation environment, we strongly recommend:

1. The switch should be placed in an appropriately ventilation environment. A minimum 25 mm space around the unit is recommended.
2. The switch and the relevant components should be kept away from sources of electrical noise such as radios, transmitters and broadband amplifiers.
3. Avoid environments with higher than recommended moisture levels.

## **Troubleshooting**

### **1. Power LED is not lit**

Check if the power cord is properly connected to the plug and the power outlet; make sure the power cord is firmly plugged into the power socket of the switch.

### **2. LINK/ACT LED is not lit when connected to devices**

- Make sure the network device attached to the switch is turned on.
- Make sure the network cable is properly connected to the switch and the network device.
- Make sure the network cable is a UTP cable that complies with EIA/TIA 568 and Category 5 specifications.

**Contact your dealer if problems persist.**

## Federal Communication Commission Interference Statement

This equipment has been tested and found to comply with the limits for a Class B digital device, pursuant to Part 15 of FCC Rules. These limits are designed to provide reasonable protection against harmful interference in a residential installation. This equipment generates, uses, and can radiate radio frequency energy and, if not installed and used in accordance with the instructions, may cause harmful interference to radio communications.

However, there is no guarantee that interference will not occur in a particular installation. If this equipment does cause harmful interference to radio or television reception, which can be determined by turning the equipment off and on, the user is encouraged to try to correct the interference by one or more of the following measures:

1. Reorient or relocate the receiving antenna.
2. Increase the separation between the equipment and receiver.
3. Connect the equipment into an outlet on a circuit different from that to which the receiver is connected.
4. Consult the dealer or an experienced radio technician for help.

### FCC Caution

This device and its antenna must not be co-located or operating in conjunction with any other antenna or transmitter.

This device complies with Part 15 of the FCC Rules. Operation is subject to the following two conditions: (1) this device may not cause harmful interference, and (2) this device must accept any interference received, including interference that may cause undesired operation.

Any changes or modifications not expressly approved by the party responsible for compliance could void the authority to operate equipment.

### CE Mark Warning

This is a class B product. In a domestic environment this product may cause radio interference in which case the user may be required to take adequate measures.





**Edimax Technology Co., Ltd.**  
No.3, Wu-Chuan 3rd Road, Wu-Gu,  
New Taipei City 24891, Taiwan

**Edimax Technology Europe B.V.**  
Nijverheidsweg 25 5683 CJ Best  
The Netherlands

**Edimax Computer Company**  
3350 Scott Blvd., Bldg.15 Santa Clara,  
CA 95054, USA