



INSTRUCTIONS FOR:

# CORDLESS OSCILLATING MULTI-TOOL 18V

MODEL NO: **CPMT18V**

Thank you for purchasing a Sealey product. Manufactured to a high standard, this product will, if used according to these instructions, and properly maintained, give you years of trouble free performance.

**IMPORTANT: PLEASE READ THESE INSTRUCTIONS CAREFULLY. NOTE THE SAFE OPERATIONAL REQUIREMENTS, WARNINGS & CAUTIONS. USE THE PRODUCT CORRECTLY AND WITH CARE FOR THE PURPOSE FOR WHICH IT IS INTENDED. FAILURE TO DO SO MAY CAUSE DAMAGE AND/OR PERSONAL INJURY AND WILL INVALIDATE THE WARRANTY. KEEP THESE INSTRUCTIONS SAFE FOR FUTURE USE.**

## 1. SAFETY



Refer to  
Instructions



Wear Ear  
Protection



Wear Eye  
Protection



Wear Protective  
Gloves



Wear Respiratory  
Protection

### 1.1. GENERAL SAFETY.

- ✓ Disconnect the tool from the battery unit before changing accessories, servicing or performing any maintenance.
- ✓ Maintain the tool and battery in good condition. Check moving parts alignment on a regular basis.
- ✓ Replace or repair damaged parts. *Use an authorised service agent and recommended parts only. Unauthorised parts may be dangerous and will invalidate the warranty.*
- ✓ Ensure the tool is switched off before installing the battery pack.
- ✓ Keep the tool and charger clean for best and safest performance.
- ✓ Remove ill fitting clothing. Remove ties, watches, rings and other loose jewellery and contain long hair.
- ✓ Evaluate your working area before using the tool e.g. ceilings, floors and enclosures may contain electrical items or water piping.
- ✓ Ensure battery pack is correctly inserted into the tool handle and latched in place before attempting to switch on tool.
- ✓ Secure loose work pieces with a clamp, vice or other adequate holding device.
- ✓ Avoid unintentional starting.
- ✓ Wear approved safety eye protection (standard spectacles are not adequate).
- ✓ Maintain correct balance and footing. Ensure the floor is not slippery and wear non-slip shoes.
- ✓ Keep children and unauthorised persons away from the working area.
- ✗ **DO NOT** use the tool where there are flammable liquids, solids or gases, such as paint solvents, etc.
- ✗ **DO NOT** allow children to operate the tool.
- ✗ **DO NOT** operate the tool if any parts are missing as this may cause failure and/or personal injury.
- ✗ **DO NOT** hold unsecured work piece in your hand.
- ✗ **DO NOT** leave the tool operating unattended.
- ✗ **DO NOT** use the tool for a task it is not designed to perform.
- ✗ **DO NOT** operate the tool when you are tired or under the influence of alcohol, drugs or intoxicating medication.
- ✗ **DO NOT** get the tool or battery charger wet or use in damp or wet locations.
- ✓ Keep tool and charger together and store in a safe, dry, childproof area where the temperature will not exceed 104°F (40°C).

### 1.2. BATTERY SAFETY.

- WARNING! Battery contains lithium-ion which is dangerous. Handle with care to avoid damage, fire, corrosion or personal injury.**
- ✓ Charge battery prior to first use. The battery pack will have been shipped in a low charge state.
- ✓ Use only the charger provided to charge the tool battery.
- ✗ **DO NOT** charge battery when room temperature is below 50°F (10°C) or above 104°F (40°C).
- ✗ **DO NOT** attempt recharging the battery by means of an engine generator or a DC power source.
- ✗ **DO NOT** short-circuit the battery by linking both terminals with a metal object, or your fingers etc.
- ✗ **DO NOT** store the battery (or tool) in locations where the temperature may exceed 104°F (40°C) such as outside sheds, above heaters, or metal buildings in summer.
- WARNING! Dispose of spent batteries correctly.**
- DANGER! DO NOT attempt to dismantle the battery pack. For safety and environmental reasons DO NOT discard in domestic waste or by burning. ONLY discard or recycle according to local authority regulations.**
- WARNING! DO NOT allow a leaking battery to contact your person. If you come into contact with battery liquid take the following immediate action:**
  - a) **Skin contact:** Wash immediately with soap and water, then wash flesh in either lemon juice or vinegar.
  - b) **Eye contact:** Wash with a strong solution of boric acid, and seek immediate medical attention.

### 1.3. ELECTRICAL SAFETY - Battery Charger

- WARNING!** It is the owner's responsibility to read, understand and comply with the following electrical instructions:  
You must ensure the risk of electric shock is minimised by the installation of appropriate safety devices. An RCCB (Residual Current Circuit Breaker) should be incorporated in the main distribution board. We also recommend that an RCD (Residual Current Device) is used with all electrical products, particularly portable equipment which is plugged into an electrical supply not protected by an RCCB. **You must** also read and understand the following instructions concerning electrical safety.
- 1.3.1. The **Electricity At Work Act 1989** requires all portable electrical appliances, if used on business premises, to be tested by a qualified electrician, using a Portable Appliance Tester (PAT), at least once a year.
- 1.3.2. The **Health & Safety at Work Act 1974** makes owners of electrical appliances responsible for the safe condition of the appliance and the safety of the appliance operator.  
**If in any doubt about electrical safety, contact a qualified electrician.**
- ✓ Ensure that the charger and cable are inspected for wear and damage, to ensure they are safe before connecting to the mains power supply. If worn or damaged **DO NOT** use, immediately replace or contact a qualified electrician.
- ✓ Check cables are always protected against short circuit and overload.
- ✓ **Important:** Check that the voltage marked on the charger is the same as the power supply to be used.
- ✗ **DO NOT** pull or carry the charger by the power lead, or pull the plug from the mains socket by the power lead.

- X **DO NOT** use any other type of charger.
- X **DO NOT** try to open or dismantle the charger.
- X **DO NOT** get the charger wet, or use in wet, damp conditions (for indoor use only).
- ✓ All mains electrical supply safety warnings must be followed as described in 1.3.
- ✓ Disconnect the charger from the mains power supply when not in use.
- X **DO NOT** operate the charger if it has been dropped, or has received a sharp knock, or is damaged. Contact an authorised service agent.
- X **DO NOT** insert objects or material into the hole reserved for the battery.
- X **DO NOT** force the battery into the charger. The battery will only fit one way to ensure correct polarity alignment.
- X **DO NOT** immediately charge a second battery. Consecutive charging will overheat the charger. Allow the unit to cool for 15 minutes before charging the next battery.
- X **DO NOT** attempt to connect two chargers together.
- ✓ Store the charger in the same manner as the battery, see section 1.2.

## 2. INTRODUCTION

One tool suitable for multiple tasks such as sanding, scraping and cutting various materials. Variable speed control with range from 5000 to 15000rpm. Powered by Lithium-ion battery, which maintains a high energy density level with a exhausted discharge curve - performing better and longer than a conventional Ni-CD/Ni-MH battery. No memory effect allows the battery to recover from a deep discharge with no tendency to reduce overall capacity. Includes sanding discs, backing pad, offset cutting blade, offset scraper and one hour mains charger, all supplied in canvas storage bag. Full range of additional accessories available.

## 3. SPECIFICATION

<b>Model No:</b> .....	<b>CPMT18V</b>
Battery Type: .....	18V - 1.5Ah Li-ion
No Load Speed: .....	5000-16000rpm
Replacement Battery: .....	CP5418VBP
Weight: .....	2.9kg
Noise Power: .....	81.87dBA
Noise Pressure: .....	70.87dBA
Vibration: .....	4.738m/s <sup>2</sup>
Uncertainty: .....	2.369m/s <sup>2</sup>
<b>Additional Accessories:</b>	
Blade Set (3pc): .....	<b>SMTA1</b>
Half - Moon Cutting Blade: .....	<b>SMTA2</b>
Carbon Tipped Half- Moon Cutting Blade: .....	<b>SMTA3</b>
Diamond Cutting Blade: .....	<b>SMTA4</b>
Sanding Sheet Set (20pc) .....	<b>SMTA5</b>
Triangle Sanding Pad: .....	<b>SMTA6</b>

## 4. OPERATION

### ☐ **IMPORTANT WARRANTY INFORMATION:**

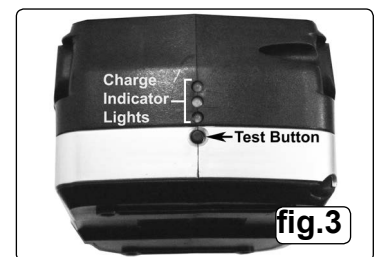
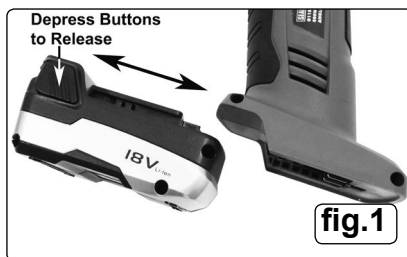
The battery pack fitted to this cordless tool is considered to be a consumable item and its ability to accept charge will reduce over time. We will provide warranty against mechanical and electrical defect for a period of one year - this does not cover fair wear and tear. If the battery is not properly charged before first use, or regularly conditioned, its capacity will diminish. Under these circumstances we will not replace the battery pack even if it is less than one year old.

### 4.1. Battery Charging

#### ☐ **Warning: Lithium-ion batteries should not be stored in a fully discharged state.**

**Note:** Batteries are supplied in a low charge state. Charge the batteries fully before use.

- 4.1.1. To remove the battery from the tool, depress the two spring loaded buttons and slide out (fig.1). **DO NOT** touch the metal battery terminals.
- 4.1.2. Take the base charger and plug it into the mains, the green LED (fig.2) will flash.
- 4.1.3. The battery is designed to fit into the charger one way only. This is to ensure that the positive (+) and negative (-) polarities correspond. Insert the battery fully and firmly to seat the battery into the charging base (fig.2)
- 4.1.4. When the battery is inserted into the charger the red LED (fig.2) will illuminate; this indicates that the battery is now charging.
- 4.1.5. When the green LED illuminates the battery is fully charged. The red LED will extinguish. An exhausted battery will charge in one hour.
- 4.1.6. During the charging process the battery status can be checked by pressing the test button (fig.3). The red LED indicates that the battery is discharged, red and amber indicates partially charged, red, amber and green fully charged.
- 4.1.7. Remove the battery from the charger. Switch off and remove the plug from the mains. Push the battery back into the tool (fig.1) until it snaps into place. The tool is now ready for use.



#### 4.2. Tool set up

☐ **WARNING! To prevent injury from accidental operation remove the battery before changing attachments**

4.2.1. Place the attachment over the spindle, shoulder facing away from the tool. Line up the holes on the attachment with the pins on the spindle shoulder.

**Note:** The Offset Cutter Blade should only be used in the straight ahead position and not an angled position, see fig.7.

4.2.2. Slide the small washer, then the large washer onto the cap screw. Make sure the cupped side of the large washer is toward the tool. While holding the attachment over the pins on the tool, thread the cap screw in place, see fig.6.

4.2.3. Tighten the cap screw onto the spindle using the provided hex key, torque to approximately 10 ft-lb.

4.2.4. After securing, the attachment should not move on the spindle. If it can move with the power off, remount it, making sure that the holes on the attachment line up with the pins on the spindle. Tighten the cap screw securely.

#### 4.3. Work area set up

Choose a work area that is clean and well-lit, not accessible children or pets.

#### 4.4. Operation

4.4.1. To turn on the tool, slide the On/Off switch (fig.4) forward.

4.4.2. Turn the speed selector to the required speed

**DO NOT** allow contact between the angled cutter, scraper or other accessory and workpiece until the tool is running at the set speed.

4.4.3. Avoid contact with objects such as metal screws and nails when sanding, scraping, or cutting.

4.4.4. **DO NOT** apply excessive pressure on the tool. Allow the tool to do the work.

4.4.5. When finished, turn off the tool and allow it to stop before setting it down.

4.4.6. Prior to storing the tool, remove the attachment and wipe it clean. Store the tool in a clean, dry, safe location out of reach of children and other unauthorized persons.



fig.4

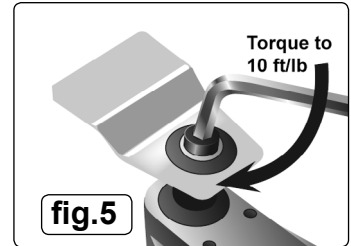


fig.5

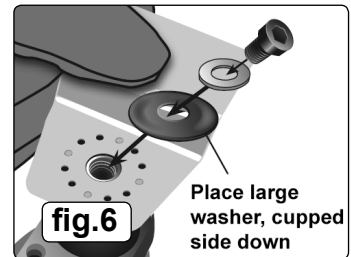


fig.6

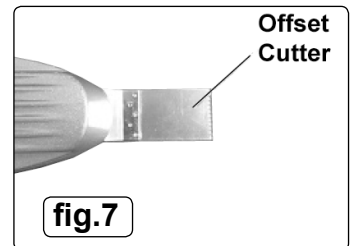


fig.7

## 5. MAINTENANCE

☐ **WARNING! To prevent injury from accidental operation, turn the tool off and remove the battery before performing any inspection, maintenance or cleaning procedures.**

☐ **WARNING! To prevent serious injury from tool failure, DO NOT use damaged equipment. If abnormal noise or vibration occurs, have the problem corrected before further use.**

#### 5.1. Maintenance

5.1.1. Before each use, inspect the general condition of the tool. Check for loose screws, misalignment or binding of moving parts, cracked or broken parts, damaged electrical wiring, or any other condition that may affect its safe operation.

5.1.2. Inspect accessories: sanding sheets should not be dull or contain excessive debris build up. The angle scraper and cutting blade should be clean and sharp.

5.1.3. After use clean external surfaces with a clean cloth.

#### Environmental Protection

Recycle unwanted materials instead of disposing of them as waste. All tools, accessories and packaging should be sorted, taken to a recycling centre and disposed of in a manner which is compatible with the environment.

#### WEEE Regulations

Dispose of this product at the end of its working life in compliance with the EU Directive on Waste Electrical and Electronic Equipment (WEEE). When the product is no longer required, it must be disposed of in an environmentally protective way. Contact your local solid waste authority for recycling information.

#### Battery Disposal

Dispose of spent batteries correctly. **ONLY** dispose of or recycle according to local authority regulations

Under the Waste Batteries and Accumulators Regulations 2009, Jack Sealey Ltd are required to inform potential purchasers of products containing batteries (as defined within these regulations), that they are registered with Valpak's registered compliance scheme. Jack Sealey Ltd's Batteries Producer Registration Number (BPRN) is BPRN00705.



**Parts support is available for this product. To obtain a parts listing and/or diagram, please log on to [www.sealey.co.uk](http://www.sealey.co.uk), email [sales@sealey.co.uk](mailto:sales@sealey.co.uk) or telephone 01284 757500.**


**NOTE:** It is our policy to continually improve products and as such we reserve the right to alter data, specifications and component parts without prior notice.


**IMPORTANT:** No liability is accepted for incorrect use of this product.

**WARRANTY:** Guarantee is 12 months from purchase date, proof of which will be required for any claim.



**Sole UK Distributor, Sealey Group,**  
Kempson Way, Suffolk Business Park,  
Bury St. Edmunds, Suffolk,  
IP32 7AR

 01284 757500

 01284 703534

 [www.sealey.co.uk](http://www.sealey.co.uk)

 [sales@sealey.co.uk](mailto:sales@sealey.co.uk)

## **WARNING! – Risk of Hand Arm Vibration Injury.**

**This tool may cause Hand Arm Vibration Syndrome if its use is not managed adequately.**

This tool is subject to the vibration testing section of the Machinery Directive 2006/42/EC.

This tool is to be operated in accordance with these instructions.

**Measured vibration emission value (a): . . . . . 4.738m/s<sup>2</sup>**

**Uncertainty value (k):. . . . . 2.369m/s<sup>2</sup>**

*Please note that the application of the tool to a sole specialist task may produce a different average vibration emission. We recommend that a specific evaluation of the vibration emission is conducted prior to commencing with a specialist task.*

A health and safety assessment by the user (or employer) will need to be carried out to determine the suitable duration of use for each tool.

**NB:** Stated Vibration Emission values are type-test values and are intended to be typical.

Whilst in use, the actual value will vary considerably from and depend on many factors.

Such factors include; the operator, the task and the inserted tool or consumable.

**NB:** ensure that the length of leader hoses is sufficient to allow unrestricted use, as this also helps to reduce vibration.

*The state of maintenance of the tool itself is also an important factor, a poorly maintained tool will also increase the risk of Hand Arm Vibration Syndrome.*

### **Health surveillance.**

We recommend a programme of health surveillance to detect early symptoms of vibration injury so that management procedures can be modified accordingly.

### **Personal protective equipment.**

We are not aware of any personal protective equipment (PPE) that provides protection against vibration injury that may result from the uncontrolled use of this tool. We recommend a sufficient supply of clothing (including gloves) to enable the operator to remain warm and dry and maintain good blood circulation in fingers etc. Please note that the most effective protection is prevention, please refer to the Correct Use and Maintenance section in these instructions. Guidance relating to the management of hand arm vibration can be found on the HSE website [www.hse.gov.uk](http://www.hse.gov.uk) - Hand-Arm Vibration at Work.