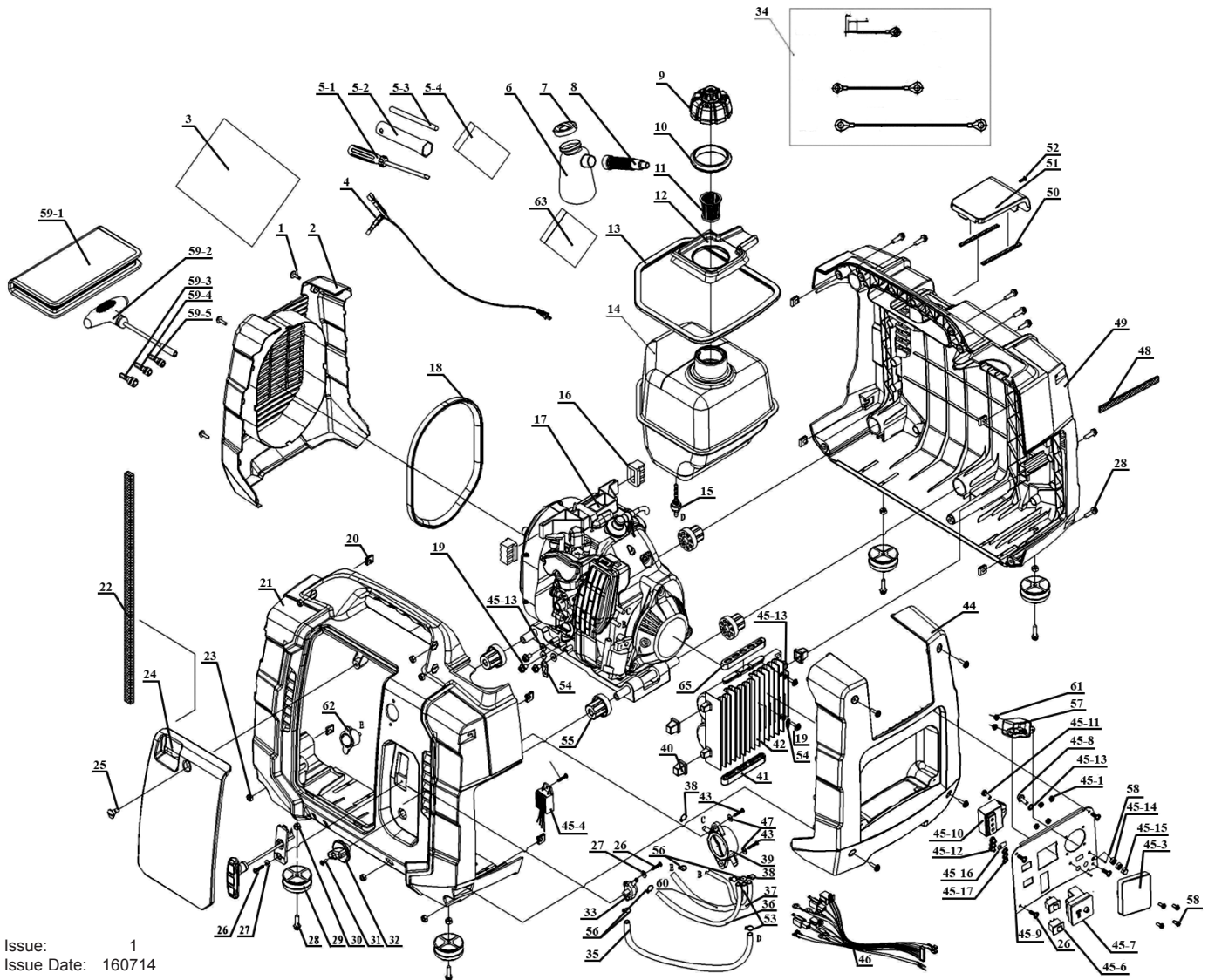




PARTS FOR:  
**GENERATOR INVERTER 1050W - 4 STROKE ENGINE**  
MODEL: **G1050I**

1 OF 5



Issue: 1  
Issue Date: 160714

ITEM	PART NO	DESCRIPTION	ITEM	PART NO	DESCRIPTION	ITEM	PART NO	DESCRIPTION	ITEM	PART NO	DESCRIPTION
1	G2000I.01	SCREW	20	G2000I.20	REED NUT	43	G1050I.43	SELF-TAPPING SCREW	50	G1050I.50	FILTER
2	G1050I.02	REAR COVER	21	G1050I.21	CASE AND INLAY, RIGHT	44	G1050I.44	FRONT COVER	51	G1050I.51	TOP COVER
3	G2000I.03	CARRY BAG	22	G1050I.22	FILTER	45	G1050I.45	PANEL ASSEMBLY	52	G1050I.52	SELF-TAPPING SCREW
4	G2000I.04	PLUG LINE CABLE	23	G2000I.23	NUT	45-1	G2000I.45-1	NUT	53	G1050I.53	PIPE CLIP
5	G2000I.05	TOOL BAG	24	G1050I.24	CASE COVER, RIGHT	45-3	G2000I.45-3	AC SOCKET	54	G2000I.54	CONNECT PLATE
5-1	G2000I.05-1	SCREWDRIVER	25	G2000I.25	OIL FILLER CAP SCREW	45-4	G1050I.45-4	VOLTAGE SUPPORT	55	G1050I.55	VIBRATION ABSORBER
5-2	G2000I.05-2	SPANNER (PILOT)	26	G2000I.26	SELF-TAPPING SCREW	45-5	G1050I.45-5	SCREW	56	G1050I.56	FUEL PIPE CLIP
5-3	G2000I.05-3	PILOT BAR	27	G2000I.27	FLAT WASHER	45-6	G2000I.45-6	SWITCH	57	G1050I.57	USB SOCKET
5-4	G2000I.05-4	TOOL BAG	28	G2000I.28	SCREW	45-7	G1050I.45-7	DC 12V SOCKET	58	G2000I.58	BOLT
6	G2000I.06	OIL CAN	29	G2000I.29	RUBBER PAD	45-8	G2000I.45-8	BOLT	59	G2000I.59	CARBURATOR REMOVING TOOL
7	G2000I.07	TANK CAP	30	G2000I.30	NUT	45-9	G1050I.45-9	CONTROL PANEL	59-1	G2000I.59-1	TOOL BAG
8	G2000I.08	NOZZLE	31	G2000I.31	HANDLE SCREW	45-10	G1050I.45-10	IGNITION SET	59-2	G2000I.59-2	T-TYPE WRENCH
9	G2000I.09	TANK CAP ASS'Y	32	G2000I.32	FUEL SWITCH HANDLE	45-11	G2000I.45-11	SCREW	59-3	G2000I.59-3	SLEEVE 10mm
10	G2000I.10	FUEL SEAL	33	G2000I.33	FUEL SWITCH	45-12	G1050I.45-12	WASHER	59-4	G2000I.59-4	SLEEVE 8mm
11	G2000I.11	FILTER CUP	34	G1050I.34	FUEL PIPE CLIP	45-13	G2000I.45-13	WASHER	59-5	G2000I.59-5	SLEEVE 7mm
12	G1050I.12	FUEL TANK COVER	35	G1050I.35	FUEL PIPE	45-14	G2000I.45-14	NUT	60	G1050I.60	OIL FUEL PIPE
13	G1050I.13	FUEL TANK RUBBER SEAL	36	G1050I.36	FUEL PIPE	45-15	G2000I.45-15	NUT	61	G1050I.61	OLIVE
14	G1050I.14	FUEL TANK	37	G1050I.37	FUEL PIPE	45-16	G2000I.45-16	CONNECT PLATE	62	G2000I.62	OILER
15	G2000I.15	FUEL LID ASS'Y	38	G2000I.38	FUEL PIPE CLIP	45-17	G1050I.45-17	SCREW	63	G2000I.63	TOOL BAG
16	G1050I.16	VIBRATION ABSORBER	39	G2000I.39	FUEL PUMP ASS'Y	46	G1050I.46	CABLE ASSEMBLY	65	G2000I.65	VIBRATION ABSORBER
17	G1050I.17	ENGINE ASS'Y	40	G2000I.40	VIBRATION ABSORBER	47	G1050I.47	WASHER			
18	G1050I.18	MUFFLER RUBBER BAND	41	G2000I.41	VIBRATION ABSORBER	48	G1050I.48	FILTER			
19	G1050I.19	SCREW	42	G1050I.42	INVERTER	49	G1050I.49	CASE AND INLAY, LEFT			

**NOTE:** It is our policy to continually improve products and as such we reserve the right to alter data, specifications and component parts without prior notice.

**IMPORTANT:** No liability is accepted for incorrect use of product.

**WARRANTY:** Guarantee is 12 months from purchase date, proof of which will be required for any claim.

**INFORMATION:** For a copy of our latest catalogue and promotions call us on 01284 757525 and leave your full name and address, including postcode.



Sole UK Distributor,  
Sealey Group, Kempson Way,  
Suffolk Business Park,  
Bury St Edmunds, Suffolk, IP32 7AR



01284 757500



01284 703534

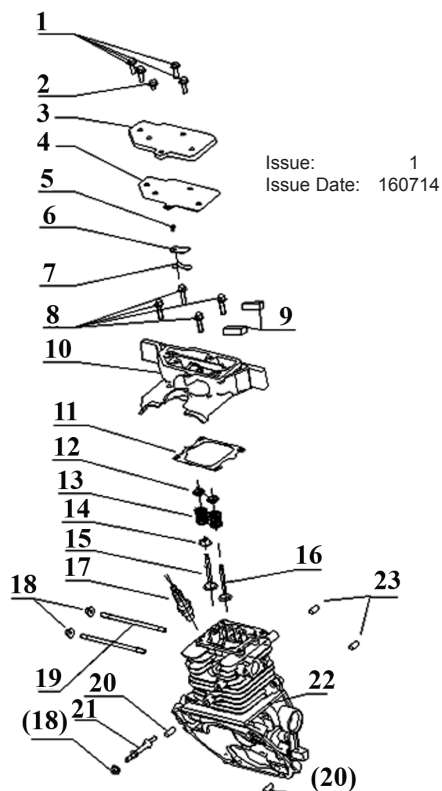


[www.sealey.co.uk](http://www.sealey.co.uk)



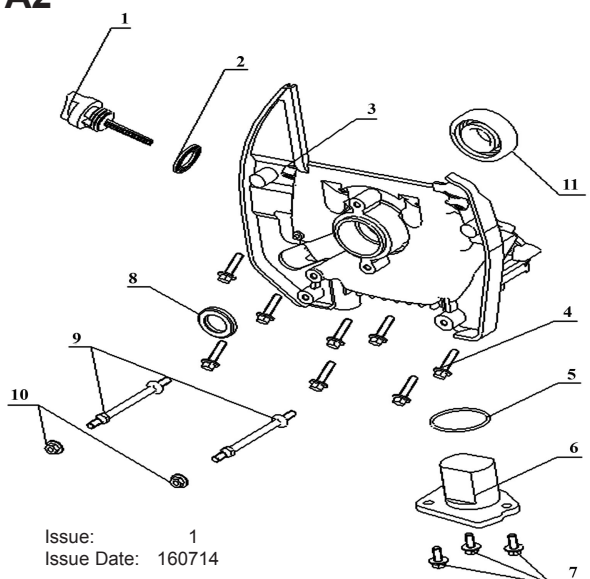
[sales@sealey.co.uk](mailto:sales@sealey.co.uk)

## A1



ITEM	PART NO	DESCRIPTION
A1	G1050I.A1	TOP CRANKCASE ASS'Y
1	G1050I.A1-1	BOLT
2	G1050I.A1-2	BOLT
3	G1050I.A1-3	TOP COVER
4	G1050I.A1-4	TOP COVER SPACER
5	G1050I.A1-5	BOLT
6	G1050I.A1-6	PLATE, RESTRICT
7	G1050I.A1-7	BOLT, EXHAUST PIPE
8	G1050I.A1-8	BOLT
9	G1050I.A1-9	FILTER
10	G1050I.A1-10	CYLINDER HEAD
11	G1050I.A1-11	SPACER, CYLINDER HEAD
12	G1050I.A1-12	SPRING HOLDER, VALVE
13	G1050I.A1-13	SPRING, VALVE
14	G1050I.A1-14	OIL SEAL ASS'Y
15	G1050I.A1-15	VALVE, INTAKE
16	G1050I.A1-16	VALVE, EXHAUST
17	G1050I.A1-17	SPARK PLUG
18	G1050I.A1-18	NUT
19	G1050I.A1-19	BOLT, INTAKE PIPE
20	G1050I.A1-20	PIN
21	G1050I.A1-21	BOLT, INTAKE PIPE
22	G1050I.A1-22	TOP CRANKCASE
23	G1050I.A1-23	PIN

## A2



ITEM	PART NO	DESCRIPTION
A2	G1050I.A2	CRANKCASE ASS'Y
1	G1050I.A2-1	DIPSTICK
2	G1050I.A2-2	OIL SEAL ASS'Y
3	G1050I.A2-3	DOWN CRANKCASE
4	G1050I.A2-4	BOLT
5	G1050I.A2-5	O-RING
6	G1050I.A2-6	SENSOR ASS'Y
7	G1050I.A2-7	BOLT
8	G1050I.A2-8	OIL SEAL ASS'Y
9	G1050I.A2-9	BOLT, INTAKE PIPE
10	G1050I.A2-10	NUT
11	G1050I.A2-11	BEARING

**NOTE:** It is our policy to continually improve products and as such we reserve the right to alter data, specifications and component parts without prior notice.

**IMPORTANT:** No liability is accepted for incorrect use of product.

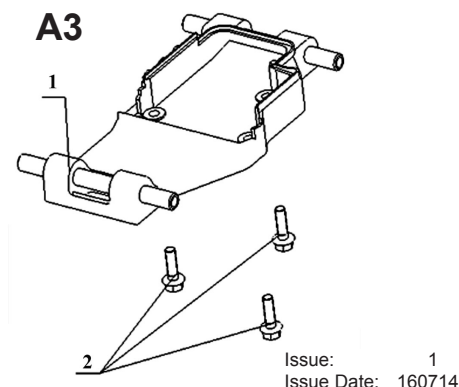
**WARRANTY:** Guarantee is 12 months from purchase date, proof of which will be required for any claim.

**INFORMATION:** For a copy of our latest catalogue and promotions call us on 01284 757525 and leave your full name and address, including postcode.

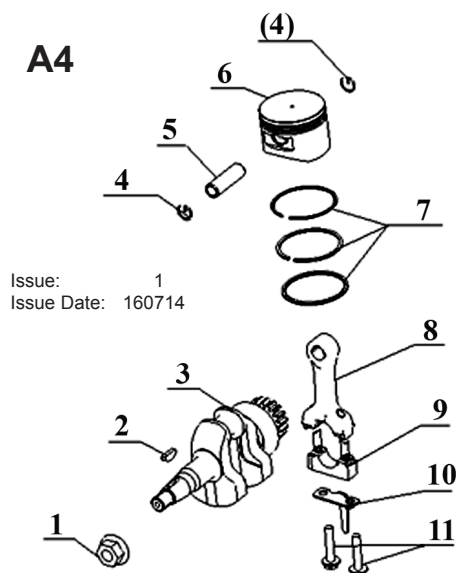


PARTS FOR:  
**GENERATOR INVERTER 1050W - 4 STROKE ENGINE**  
MODEL: **G1050I**

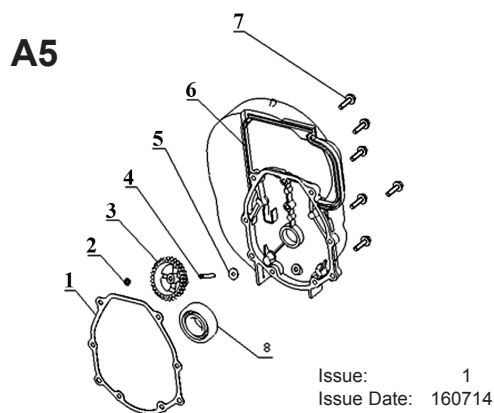
**3 OF 5**



ITEM	PART NO	DESCRIPTION
A3	G1050I.A3	BOTTOM BOARD ASS'Y
1	G1050I.A3-1	BOTTOM BOARD
2	G1050I.A3-2	BOLT



ITEM	PART NO	DESCRIPTION
A4	G1050I.A4	CRANKSHAFT/PISTON/ CONNECTING ROD ASS'Y
1	G1050I.A4-1	NUT
2	G1050I.A4-2	KEY
3	G1050I.A4-3	CRANKSHAFT ASS'Y
4	G1050I.A4-4	CIRCLIP, PISTON PIN
5	G1050I.A4-5	PIN, PISTON
6	G1050I.A4-6	PISTON
7	G1050I.A4-7	PISTON RING
8	G1050I.A4-8	CONNECTING ROD, UPPER
9	G1050I.A4-9	CONNECTING ROD, LOWER
10	G1050I.A4-10	OIL LEAKAGE PLATE
11	G1050I.A4-11	BOLT



ITEM	PART NO	DESCRIPTION
A5	G1050I.A5	CRANKCASE COVER ASS'Y
1	G1050I.A5-1	WASHER, CRANKCASE COVER
2	G1050I.A5-2	CIRCLIP
3	G1050I.A5-3	OIL GEAR
4	G1050I.A5-4	OIL GEAR SHAFT
5	G1050I.A5-5	WASHER
6	G1050I.A5-6	CRANKCASE COVER
7	G1050I.A5-7	BOLT
8	G1050I.A5-8	BEARING

**NOTE:** It is our policy to continually improve products and as such we reserve the right to alter data, specifications and component parts without prior notice.

**IMPORTANT:** No liability is accepted for incorrect use of product.

**WARRANTY:** Guarantee is 12 months from purchase date, proof of which will be required for any claim.

**INFORMATION:** For a copy of our latest catalogue and promotions call us on 01284 757525 and leave your full name and address, including postcode.



Sole UK Distributor,  
Sealey Group, Kempson Way,  
Suffolk Business Park,  
Bury St Edmunds, Suffolk, IP32 7AR



01284 757500

01284 703534



[www.sealey.co.uk](http://www.sealey.co.uk)

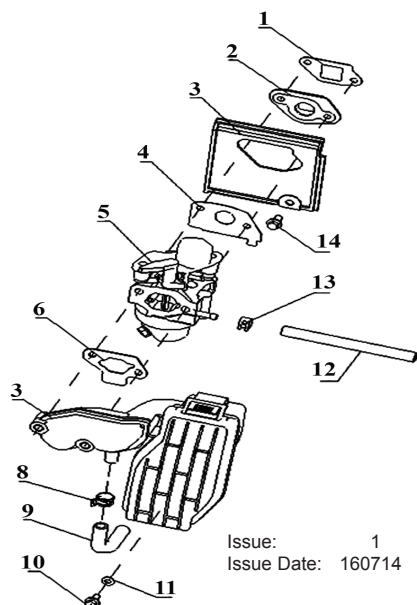
[sales@sealey.co.uk](mailto:sales@sealey.co.uk)



PARTS FOR:  
**GENERATOR INVERTER 1050W - 4 STROKE ENGINE**  
MODEL: **G1050I**

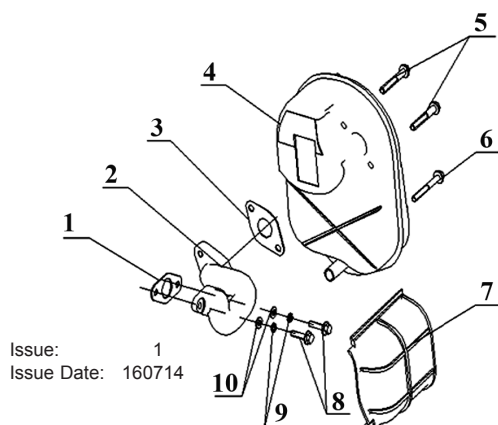
**4 OF 5**

**A6**



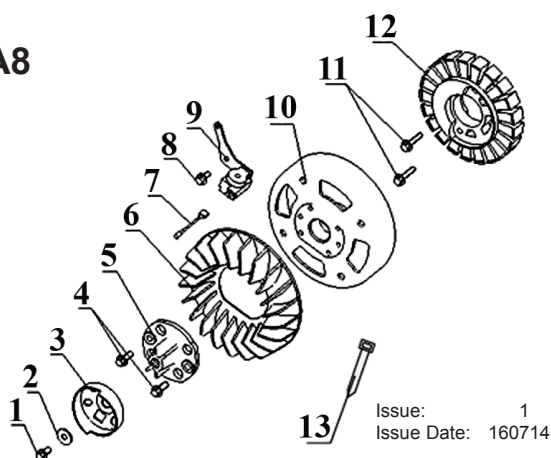
ITEM	PART NO	DESCRIPTION
A6	G1050I.A6	CARBURETOR & AIR CLEANER ASS'Y
1	G1050I.A6-1	WASHER, INTAKE
2	G1050I.A6-2	INTAKE HOLDER
3	G1050I.A6-3	INTAKE SIDE COVER
4	G1050I.A6-4	SPACER, CARBURETOR
5	G1050I.A6-5	CARBURETOR
6	G1050I.A6-6	SEAL, AIR CLEANER
7	G1050I.A6-7	AIR CLEANER
8	G1050I.A6-8	CIRCLIP
9	G1050I.A6-9	PIPE, AIR CLEANER
10	G1050I.A6-10	BOLT
11	G1050I.A6-11	WASHER
12	G1050I.A6-12	HOSE, FUEL
13	G1050I.A6-13	CLIP
14	G1050I.A6-14	BOLT

**A7**



ITEM	PART NO	DESCRIPTION
A7	G1050I.A7	MUFFLER ASS'Y
1	G1050I.A7-1	SEAL, EXHAUST
2	G1050I.A7-2	EXHAUST PIPE
3	G1050I.A7-3	SEAL, MUFFLER
4	G1050I.A7-4	MUFFLER ASS'Y
5	G1050I.A7-5	BOLT
6	G1050I.A7-6	BOLT
7	G1050I.A7-7	EXHAUST SIDE COVER
8	G1050I.A7-8	BOLT
9	G1050I.A7-9	WASHER
10	G1050I.A7-10	WASHER

**A8**



ITEM	PART NO	DESCRIPTION
A8	G1050I.A8	IGNITION SYSTEM ASS'Y
1	G1050I.A8-1	BOLT
2	G1050I.A8-2	WASHER
3	G1050I.A8-3	RATCHET WHEEL
4	G1050I.A8-4	BOLT
5	G1050I.A8-5	RATCHET WHEEL HOLDER
6	G1050I.A8-6	FAN
7	G1050I.A8-7	CABLE ASS'Y, TRIGGER
8	G1050I.A8-8	BOLT
9	G1050I.A8-9	TRIGGER ASS'Y
10	G1050I.A8-10	ROTOR ASS'Y
11	G1050I.A8-11	BOLT
12	G1050I.A8-12	STATOR WINDING
13	G1050I.A8-13	STRIP

**NOTE:** It is our policy to continually improve products and as such we reserve the right to alter data, specifications and component parts without prior notice.

**IMPORTANT:** No liability is accepted for incorrect use of product.

**WARRANTY:** Guarantee is 12 months from purchase date, proof of which will be required for any claim.

**INFORMATION:** For a copy of our latest catalogue and promotions call us on 01284 757525 and leave your full name and address, including postcode.



Sole UK Distributor,  
Sealey Group, Kempson Way,  
Suffolk Business Park,  
Bury St Edmunds, Suffolk, IP32 7AR



01284 757500



01284 703534



[www.sealey.co.uk](http://www.sealey.co.uk)



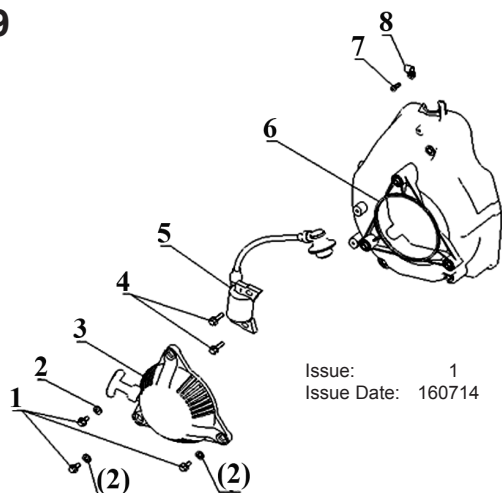
[sales@sealey.co.uk](mailto:sales@sealey.co.uk)



PARTS FOR:  
**GENERATOR INVERTER 1050W - 4 STROKE ENGINE**  
MODEL: **G1050I**

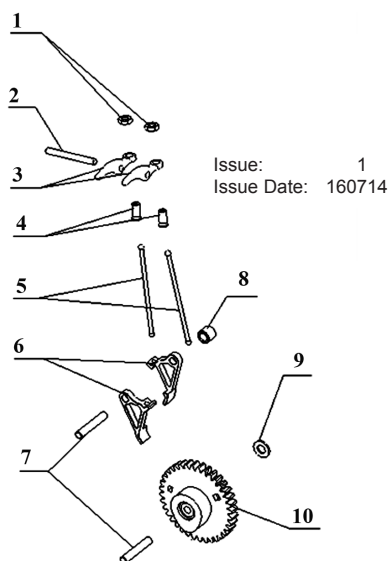
**5 OF 5**

**A9**



ITEM	PART NO	DESCRIPTION
A9	G1050I.A9	STARTER ASS'Y
1	G1050I.A9-1	BOLT
2	G1050I.A9-2	WASHER
3	G1050I.A9-3	COVER, STARTING RECOIL
4	G1050I.A9-4	BOLT
5	G1050I.A9-5	IGNITION ASS'Y
6	G1050I.A9-6	COVER ASS'Y
7	G1050I.A9-7	BOLT
8	G1050I.A9-8	CLIP

**A10**



ITEM	PART NO	DESCRIPTION
A10	G1050I.A10	OIL PUMP ASS'Y
1	G1050I.A10-1	ADJUSTING NUT
2	G1050I.A10-2	UPPER SWING ARM SHAFT
3	G1050I.A10-3	UPPER SWING ARM
4	G1050I.A10-4	ADJUSTING BOLT
5	G1050I.A10-5	MANDREL
6	G1050I.A10-6	LOWER SWING ARM
7	G1050I.A10-7	LOWER SWING ARM SHAFT
8	G1050I.A10-8	SHAFT COVER
9	G1050I.A10-9	WASHER
10	G1050I.A10-10	CAM

**NOTE:** It is our policy to continually improve products and as such we reserve the right to alter data, specifications and component parts without prior notice.

**IMPORTANT:** No liability is accepted for incorrect use of product.

**WARRANTY:** Guarantee is 12 months from purchase date, proof of which will be required for any claim.

**INFORMATION:** For a copy of our latest catalogue and promotions call us on 01284 757525 and leave your full name and address, including postcode.



Sole UK Distributor,  
Sealey Group, Kempson Way,  
Suffolk Business Park,  
Bury St Edmunds, Suffolk, IP32 7AR



01284 757500



01284 703534



[www.sealey.co.uk](http://www.sealey.co.uk)



[sales@sealey.co.uk](mailto:sales@sealey.co.uk)