

1. SAFETY INSTRUCTIONS

- ☐ **WARNING!** Ensure all Health and Safety, local authority, and general workshop practice regulations are strictly adhered to when using tools.
- x **DO NOT** use tools if damaged or worn.
- ✓ Maintain the tools in good and clean condition for best and safest performance.
- ✓ Ensure all threads are clean and well lubricated.
- ✓ Always check that puller is correctly assembled and is square with the workpiece.
- ✓ Ensure the nuts and bolts are tight on the jaw heads.
- ✓ If vehicle is raised, ensure it is adequately supported with axle stands, ramps, etc. as appropriate.
- ✓ Wear suitable clothing to avoid snagging. Do not wear jewellery. Tie back long hair.
- ✓ Wear approved eye protection. A full range of personal safety equipment is available from your Sealey dealer.
- ✓ Where possible shield workpiece with canvas or similar to provide protection against failed parts.
- x **DO NOT** heat puller jaws when heating a gear or bearing as this will affect the temper and, therefore, the strength of the material.
- x **DO NOT** hit workpiece with a hammer if workpiece has not moved with maximum puller force applied. Use a larger capacity puller.
- ✓ Account for all tools and parts being used and do not leave them in or on the vehicle.

IMPORTANT: Always refer to the vehicle manufacturer's service instructions, or proprietary manual, to establish the correct procedure and data.

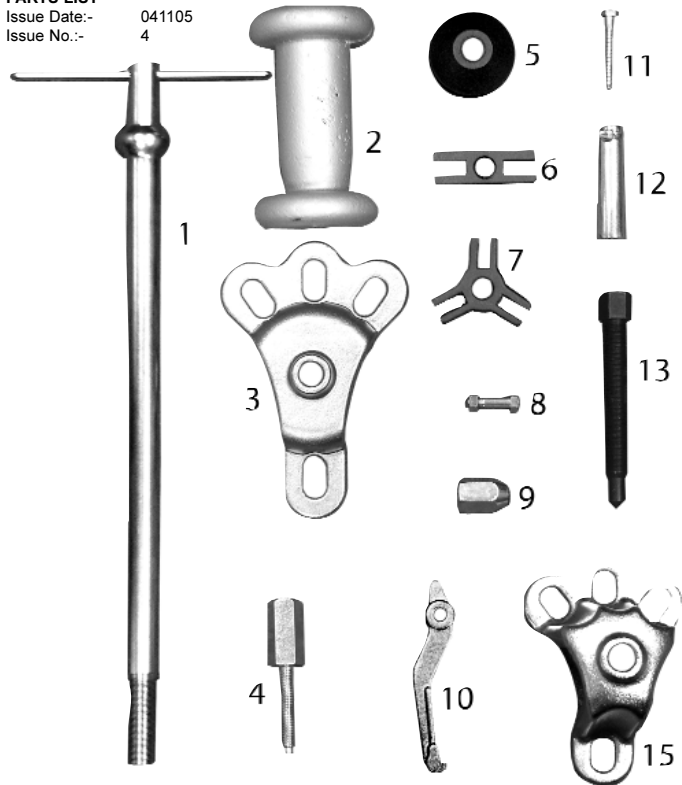
2. INTRODUCTION AND SPECIFICATION

The PS983 Slide hammer puller set with 570mm shaft consists of 18 pieces for use in 8 modes; External 3 jaw puller, internal 3 jaw puller, external 2 jaw puller, internal 2 jaw puller, grip wrench adaptor, lip puller, hub puller and dent puller. Supplied in a carrying case.

PULLER TYPE: 2 LEGGED		3 LEGGED	
Internal Capacity: 35-110mm	Reach: 82mm	50-135mm	Reach: 82mm
External Capacity: 50-140mm	Reach: 75mm	20-135mm	Reach: 75mm

3. CONTENTS & PARTS

PARTS LIST
Issue Date:- 041105
Issue No.:- 4



Item	Part No.	Description
1	PS983/601	T Bar
2	PS983/602	Hammer
3	PS983/603	Axle puller
4	PS983/604	Grip wrench adaptor
5	PS983/605	Nut
6	PS983/606	2 Jaw Head
7	PS983/607	3 Jaw head
8	PS983/608	Nut and Bolt (x3)
9	PS983/610	Attachment
10	PS983/611	Leg (x3)
11	PS983/612	Screw
12	PS983/613	Hook
13	PS983/614	Centre screw
15	PS983/B2	Deep Axle puller

NOTE: It is our policy to continually improve products and as such we reserve the right to alter data, specifications and component parts without prior notice.

IMPORTANT: No liability is accepted for incorrect use of this product.

WARRANTY: Guarantee is 12 months from purchase date, proof of which will be required for any claim.

INFORMATION: For a copy of our catalogue and latest promotions call us on 01284 757525 and leave your full name, address and postcode.